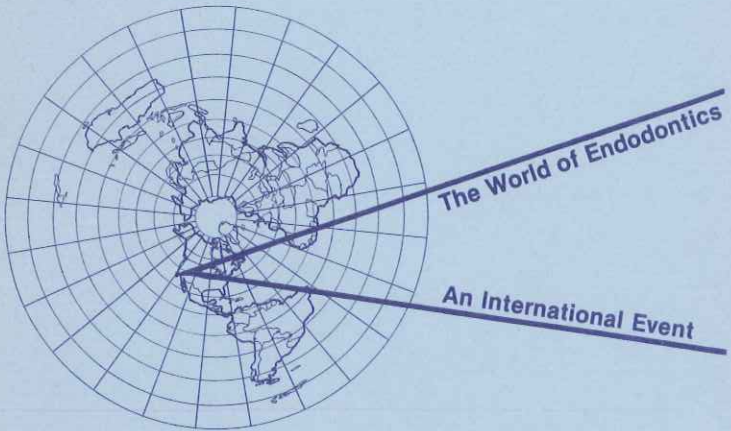


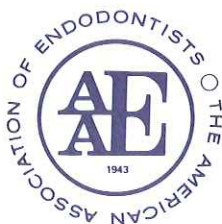
**Archive Copy  
Do Not Remove**

**the american association  
of  
endodontists  
proudly presents**



**AAE 37th Annual Session  
April 16 - 20, 1980  
Los Angeles, California, USA**

**THE  
AMERICAN ASSOCIATION  
OF  
ENDODONTISTS**



**Presents Its**

**37th**

**ANNUAL  
SESSION**

**LOS ANGELES, CALIFORNIA**

**April 16 - 20, 1980**

**Century Plaza Hotel**



**A DEDICATION TO  
ELENORE L. BAKER**

In 1968 the members of the American Association of Endodontists persuaded an attractive swimming pool designer to organize and manage the Central Office. With the rapid growth in membership Elly's responsibility increased to the point where she was made Executive Director in 1970. Much of what has been accomplished has been made easier for the officers and members through Elly's support and dedication.

Now that she has us squared away for the future, Elly is retiring to a new home and life in the mountains of Big Canoe, Georgia. We shall miss her loyalty, intelligent wit and fund of AAE lore. It is with gratitude that we dedicate this meeting to her.

Paul E. Zeigler, D.D.S.  
*President, American Association of Endodontists*

## PRESIDENT'S MESSAGE

Welcome to Los Angeles and the Thirty-seventh Annual Session of the American Association of Endodontists. Al Frank and his committee have been working for two years to make your stay as comfortable and interesting as possible. Jim Simon has assembled a program as varied as our host city.

We are especially pleased to have our friends and colleagues from around the globe at this international meeting. The participation in our program by representatives from countries outside the United States promises to give us an insight into what is happening in endodontics worldwide.

Teri Frank and her committee are looking forward to showing your wives some of the unique features of Los Angeles. If you just want to relax, the Century City Plaza complex is a self-contained unit with theaters, shopping centers and restaurants. This international meeting will provide you with a chance to learn, meet old friends, and make new friends from other cultures and countries.

It's been a privilege to work with the dedicated members who have contributed so much to bring our Association to its present stature in such a short time. With the uncertainty that has been created over the changes in the way dentistry is to be practiced in the future, it's reassuring to know we have the leadership in our ranks to make the A.A.E. adapt and flourish in the years to come.

Paul E. Zeigler, D.D.S.  
*President*



## WELCOME TO LOS ANGELES

The intent of the Program Committee was to present an international forum blending both clinical and academic presentations. This will be facilitated by simultaneous translation into three languages: English, Spanish and Japanese. In addition, our speakers will explore both the current realities of practice and peer into what the future holds. Al Frank and his committee have ensured an enjoyable and smoothly run convention. I would personally like to express my thanks to all the clinicians for their readiness to participate and to all my committee members for their wholehearted cooperation.

James H. Simon, D.D.S.  
*Program Chairman*

## Table of Contents

Dedication .....	ii
President's Message .....	iii
Program Chairman's Welcome .....	iv
Table of Contents .....	v
Officers and Executive Committee Members .....	1
Board, Trustees, Past Presidents, Honorary Members ..	2
Charter Members .....	3
1980 Annual Session Committees .....	4
General Information .....	5
Program (Thursday) .....	6
Map of Meeting Room Locations .....	10
Condensed Program (Centerfold) .....	11
Ladies Program .....	13
Program (Friday) .....	15
Program (Saturday) .....	20
Program (Sunday) .....	24
List of Exhibitors .....	25
Committee Meetings .....	27
Study Clubs and Alumni Group Parties .....	27

# AMERICAN ASSOCIATION OF ENDODONTISTS

## EXECUTIVE COMMITTEE



Paul E. Zeigler  
*President*



Edward M. Osetek  
*President Elect*



Henry J. Van Hassel  
*Vice President*



Michael A. Heuer  
*Secretary*



Noah Chivian  
*Treasurer*

## BOARD OF DIRECTORS

1980

Richard C. Burns  
Arthur C. McFeaters, Jr.  
B. Harvey Wiener

1981

Charles J. Cunningham  
Gerald C. Dietz  
H. David Prensly

1982

Duane Compton  
Burton Kunik  
James. L. Gutmann

## EX OFFICIO MEMBERS OF BOARD OF DIRECTORS

*Immediate Past President:* Harry Blechman

*Editor:* Irving J. Naidorf

*Graduate Student Representative:* Eldon P. Carman

*Executive Director:* Elenore L. Baker

## AMERICAN BOARD OF ENDODONTICS

1980

Gerald M. Cathey, *secy.*  
Seymour Oliet, *pres.*  
Marshall H. Smulson

1981

I. B. Bender  
Melvin Goldman  
James H. S. Simon

1982

Dudley H. Glick  
Richard Moodnik  
Joseph I. Tenca

## TRUSTEES

### AAE ENDOWMENT AND MEMORIAL FOUNDATION

1980

Donald E. Arens, *vice ch.*  
Stephen F. Schwartz  
Herbert Spasser, *sec./treas.*  
Warren T. Wakai

1981

Myron Chubin  
Joseph D. Maggio  
Jesse Mitchell, Jr.  
Walter Soltanoff

1982

Maurice Friedman  
Leo Grudin, *chairman*  
Howard Martin  
Manuel I. Weisman

*Ex Officio:* Michael A. Heuer and Gerald M. Cathey

## PAST PRESIDENTS

W. Clyde Davis*	'43	Glenn R. Brooks	'61
Ralph F. Sommer*	'44	Vincent B. Milas	'62
Robert G. Kesel	'45	James H. Sherard, Jr.	'63
E. G. Van Valey*	'46	J. B. Freedland	'64
Maynard K. Hine	'47	Henry S. Schmidt	'65
Louis I. Grossman	'48	John I. Ingle	'66
Elmer A. Jasper*	'49	Edwin C. Van Valey	'67
Raymond L. Girardot*	'50	Samuel S. Patterson	'68
George C. Sharp*	'51	Warren J. Hedman	'69
F.D. Ostrander	'52	John F. Bucher	'70
L. A. Lucas	'53	Dudley H. Glick	'71
N. Weir Burkman*	'54	I. B. Bender	'72
Harry J. Healey*	'55	Charles A. Scott, Jr.	'73
John R. Pear	'56	Alfred L. Frank	'74
George C. Hare	'57	Robert A. Uchin	'75
George C. Stewart	'58	Frank B. Trice	'76
J. Henry Kaiser	'59	George A. Zurkow	'77
Paul P. Sherwood*	'60	Harry Blechman	'78

\*Deceased

## HONORARY MEMBERS

Mary C. Crowley  
Louis I. Grossman  
Walter Hess

Maynard K. Hine  
Oscar Maisto  
Maury Massler  
Harold Stanley



**CHARTER MEMBERS  
OF AMERICAN  
ASSOCIATION OF ENDODONTISTS**

Aguilar, Enrique C.	Kaiser, J. Henry
Albert, Harry*	Kesel, Robert G
Alexander, M.M.	Levy, Saul
Anderson, A. Floyd	Lorenz, George W.
Anthony, L. Pierce	Lucas, L.A.
Auerbach, M.B.	Lundquist, G.R.*
Auslander, Walter P.	McCormack, O.J.*
Bannister, G.P.	Maizels, Albert D.
Barab, John D.	Maxmen, Harold A.
Bender, I.B.	Meiman, Benjamin W.
Bolotny, Sophia	Meinig, Douglas A.
Burkman, N. Weir*	Meinig, George E.
Cahn, L.R.	Milas, Vincent B.
Conat, Charles N.	Neuwirth, P. Sidney
Coolidge, Edgar D.*	Obst, Joseph J.
Crockett, C.D.	Pear, John R.
Crook, J. Hobson	Pearson, Hyman H.
Davis, W. Clyde*	Peschelt, William A.
Dawson, Paul T.	Pharr, J.R.*
DeWitt, Truman G.	Rafish, S.M.
Dummett, Clifton O.	Ritter, J.W.
Epstein, Irwin A.	Robbins, Samuel M.
Epstein, Irving L.	Ross, Percy J.
Fineman, George G.	Sample, Arthur R.
Girardot, G.L.*	Sawyer, Carl W.
Green, S.D.	Schiff, William M.
Grossman, Louis I.	Schwartz, Milton*
Hare, George C.	Sharp, George C.*
Hayes, Raymond L.	Siegel, Louis C.
Haymaker, George T.	Simmons, D.G.
Henriques, Pedro E.	Sommer, Ralph F.*
High, O.C.	Starshak, Thomas C.
Hine, Maynard K.	Thorson, A.T.
Hospers, John H.	Van Valey, E.G.*
Ingersoll, William B.*	Vaughn, George W.
Jasper, Elmer A.*	Walcott, Harold I.*
Johnston, Harry B.*	White, Charles M.
Kahn, Henry	Yates, M.F.

\*Deceased

## 1980 ANNUAL SESSION COMMITTEE



James Simon  
*Chairman*

### PROGRAM

- Commercial Exhibits . . . . Thomas Rauth, chm.  
Mrs. D. Broach Thurston, manager  
Educational Resources . . . . Anthony Greening  
Printed Program . . . . . Elenore Baker  
Projected Clinics . . . . . Stephen Cohen  
Research Seminars . . . . . Melvin Goldman  
Table Clinics . . . . . Leif Bakland



Al Frank  
*Chairman*

### GENERAL ARRANGEMENTS

- Audio-Visual . . . . . Jerry Taintor  
Banquet . . . . . Dudley Glick  
Hosts . . . . . Stephen Cohen, Melvin Coleman,  
Bernard Gavron  
Housing Coordinator . . . . . James Kloss  
Luncheons . . . . . Leo Grudin  
Photographer . . . . . Al Goerig  
Reception . . . . . Jack Weichman  
Registrations . . . . . Raleigh Cummings,  
Maurice Cutler  
Signs . . . . . Kenneth Trabert  
Special Events . . . . . Richard Schmidt  
Sports Activities . . . . . David Gordon  
Ushers & Monitors . . . . . Wayne Bemis,  
Fulton Yee

### INTERNATIONAL COORDINATORS

Enrique Basrani, Raphael Minana, Mitsuru Otani, David Prensky,  
Yasuo Suga and Warren Wakai

### WOMEN'S AUXILIARY COMMITTEE

- Arrangements . . . . . Teri Frank and Ellie Glick  
Registration . . . . . Carol Kloss and Veronica Nutting  
Finance . . . . . Nanette Cutler  
Hospitality . . . . . Beatrice Lynds and Gerry Weichman  
Special Effects . . . . . Anne Krammer Gavron  
Childrens Program . . . . . Lynn Trabert  
Sports Programs . . . . . Christine Cummings  
Installation Breakfast . . . . . Dee Zeigler  
Banquet . . . . . Ellie Glick

### BUS SCHEDULES

Please look for the signs giving bus schedules to the Century Plaza Hotel. They will be located in the lobbies of the Beverly Hilton, Holiday Inn Westwood and the Ramada Inn.

## GENERAL INFORMATION

**AAE Headquarters Office** is located across from the elevators, next to the registration area on the meeting room level. Staffed by Central Office personnel - Betty Brown, Irene Elliott and Carol Lee - the office will be open from 8:00 a.m. until 5:00 p.m. daily from Wednesday through Saturday, and from 9:00 a.m. until Noon on Sunday.

**Badges** are color-coded as follows: new members - yellow; students - peach; auxiliary members and guests - blue; all others - white.

**BADGES MUST BE WORN AT ALL  
OFFICIAL AAE FUNCTIONS**

**Banquet.** Please note that a ticket is not included in your registration packet. There is, instead, a voucher which will be exchanged for a ticket when you make your table selection. Bright yellow vouchers are for tickets included in the basic registration fee, and blue vouchers are for extra tickets purchased. There is no difference in their value, however no yellow vouchers will be accepted for refunds. To avoid the confusion and possible disappointment of last minute seating, we urge you to make your table selection at the registration desk between 8:30 Wednesday and Noon Friday. Please do not wait until you arrive at the banquet. If you wish to make up a party, you must have a voucher for each person in your group in order to reserve the space. We respectfully request that you do not ask the clerk to make exceptions.

**Commercial Exhibits** are located in the California Drive (behind the registration area) on the meeting level. Exhibits will be open the following hours: Wednesday, 6:00 p.m. - 8:00 p.m.; Thursday, 9:00 a.m. - 5:00 p.m.; Friday, 8:30 a.m. - 5:00 p.m.; Saturday, 8:30 a.m. - 3:00 p.m. Please visit the exhibit hall as often and whenever possible.

**Convention Cassettes.** Eastern Audio Associates, AAE's official recording company, will record most of the sessions and major speeches. Cassettes will be available in EA's booth located in the exhibit area. You may also use the order form included in your registration packet. Cassette numbers are listed next to the title of each session being taped, and should be used when ordering.

**Drink Ducats** are not being sold this year. All drinks will be sold on a cash basis.

**Non-AAE Functions.** All events sponsored by study clubs, alumni organizations, military groups, etc. will be held either Friday evening or Saturday morning. They are listed on page 27.

**President's International Reception.** All registered persons are invited to this function and have received a ticket. If you bring a non-registered guest with you, a ticket must be purchased at the door for \$20.

**Smoking.** For the comfort of non-smoking colleagues, all smokers are requested to sit only in the rear of the meeting rooms.

### INSTANT TRANSLATION

Each person who has paid for a head-set for instant translation has been given a ticket to be turned in when the reserved equipment is picked up.

# PROGRAM

## THURSDAY, April 17, 1980

8:30 - 9:00  
OPENING SESSION  
Santa Monica Room

Greetings: Paul E. Zeigler, president, AAE  
Address: I. Lawrence Kerr, president, ADA

9:00 - 12:00  
SYMPOSIUM ON THE ROLE OF INFLAMMATION (011 - 012)  
Santa Monica Room

Moderator: Irving Naidorf

9:00 - 10:30 "Inflammation: The reaction of the pulp to injury"  
Clinician: Henry Trowbridge, D.D.S., Ph.D.  
Professor of Pathology, School of Dentistry, University of Pennsylvania; President, Pulp Biology Group, International Association for Dental Research; Editorial Board, Journal of Periodontal Research and Scientific Advisory Panel, Journal of Endodontics.

**Synopsis:** A review of inflammation designed to increase knowledge about the underlying principals. Discussion will include the vascular response, chemical mediators, inflammatory cells, mechanisms of tissue injury and repair. Special features of pulpal and periapical inflammation will be considered in order to aid the endodontists in interpreting clinical problems. A written summary will be available.

10:30 - 12:00 "Inflammatory Response to Some Materials Used in Endodontics"  
Clinician: Roberto Holland, C.C., D.C., L.D.  
Professor and Chairman, Department of Endodontics, Faculty of Dentistry of Aracatuba, UNESP, Sao Paulo, Brazil; formerly Professor and Chairman, Department of Oral Medicine and Department of Therapeutics.

**Synopsis:** Considering the great variety of materials used in endodontics, we have studied the tissue reactions in order to select the least harmful ones. Commonly used substances such as irrigation solutions, dressings and filling materials were tested in animals. Tissue reactions varied according to the type of material and the clinical conditions.

9:00 - 12:00  
ENDODONTIC RESEARCH SEMINAR (021 - 022)  
Pacific Palisades

Moderator: Melvin Goldman

9:00 - 9:25 The effect of experimental delayed tooth transplantation on periodontal healing.  
Melvin Morris, Abel Moreinis\*, Rohit Patel, Aaron Prestup, Columbia University.

**THURSDAY, April 17, 1980 continued**

- 9:25 - 9:50 *The use of thermocrystals to determine the pulp vitality.*  
*Roberto Wallentin, Mexico City, Mexico*
- 9:50 - 10:15 *Evaluation of apical leakage to dyes in endodontically treated teeth by conventional and Sargenti's methods.*  
*Aviad Tamse, Tel-Aviv University*
- 10:15 - 10:40 *Biological sealing of the apex in endodontically treated human teeth.*  
*John Pappin, University of Oregon*
- 10:40 - 11:05 *Attitudinal and personality correlates of dental education.*  
*Claron Edwards, Northwestern University*
- 11:05 - 11:30 *Long-term pulpal and periapical reactions to RC-white paste: A histologic study in monkeys.*  
*Robert Borders, Indiana University*
- 11:30 - 12:00 *Prostaglandins-dependent changes in the periapical tissues.*  
*Mahmoud Torabinejad, Loma Linda University*

**9:00 - 12:00**

**SYMPOSIUM ON PRACTICE MANAGEMENT (031 - 032)  
Beverly Hills Room**

*Moderator: Warren Wakai*

- 9:00 - 10:30 *"An Endodontic Computer Program for Office Management"*  
*Clinician: Stephen Cohen, San Francisco, CA*
- 10:30 - 12:00 *"The Role of Data Processing in Endodontic Practice Management"*  
*Clinician: Gerald Dietz, Birmingham, MI*

Drs. Cohen and Dietz have both been involved in computerizing their respective endodontic practices over the past several years. They will share their experiences and convictions that some form of data processing is the only way to rationally cope with the ever increasing information processing and record keeping load being experienced by every endodontic office. Discussion will include ways in which data processing techniques can be applied to this information explosion so that efficiency can be improved, cost stabilized and management control strengthened.

**12:00 - 2:00**

**SCIENTIFIC LUNCHEON (040)  
Los Angeles Room**

*Chairman: Richard Schmidt*

- "The Photographic Results of the Voyager's Recent Jupiter Encounter"*  
*Speaker: Arthur Lonnie Lane, Ph.D., Jet Propulsion Laboratory.*  
*Dr. Lane is the Deputy Project Scientist for the Voyager Missions to the outer planets.*

THURSDAY, April 17, 1980 continued

2:00 - 5:00  
SYMPOSIUM ON RETREATMENT (051 - 052)  
Santa Monica Room

Moderator: Leo Grudin

*"Biologic Reasons for Treatment Failures in Endodontics"*  
Clinician: Calvin Torneck, Toronto, Canada

**Synopsis:** The first part of this presentation will deal with a definition of endodontic success and failure, a biologically understood yet clinically nebulous goal. With the concept of endodontic failure established the second portion will explore the biological reasons for failure such as the failure to eliminate the original irritant, replacement irritation, introduction of new irritants, radicular cyst formation, vertical fracture of the endodontically treated tooth and failures related to incorrect pretreatment diagnosis.

*"When is a Failure a Failure?"*  
Clinician: Dudley Glick, Beverly Hills, CA

**Synopsis:** This talk will disclose areas where it is possible to successfully retreat many so-called failures and runs the gamut from errors in diagnostic judgment to iatrogenically incurred problems. One must be familiar with the reasons for recurrent problems then one can formulate a plan for correction. Intelligent interpretation of old and new facts plus refinement of techniques can alter a long range failure.

*"Surgical Correction of Failures"*  
Clinician: Raleigh Cummings, Newport Beach, CA

**Synopsis:** Successful endodontic therapy may at times result only when surgical intervention is accomplished. A variety of circumstances and conditions will be presented in which previous endodontic treatment resulted in absolute or probable failure.

A systematized clinical approach will be described for surgically treating indicated cases. Each procedure will be supported by biological rationale.

2:00 - 3:30  
ENDODONTIC RESEARCH SEMINAR (060)  
Pacific Palisades

Moderator: Melvin Goldman

2:00 - 2:30 *The influence of various factors on posttesting.*  
William Burrell, Louisiana State University

2:30 - 3:00 *The recognition and treatment of vertical root fractures.*  
George Stewart, University of Pennsylvania.

**THURSDAY, April 17, 1980 continued**

3:00 - 3:30 *Mechanical properties of amalgam restorations in endodontically treated teeth.*  
*Robert Michelich\*, T.W. Dillard, A. Nayyar, Medical College of Georgia*

**3:30 - 5:00**

**AMERICAN BOARD OF ENDODONTICS PRESENTATION  
Pacific Palisades**

- 3:30 - 3:40 *Introduction*  
*Seymour Oliet, president*
- 3:40 - 3:45 *Mechanism of Applications*  
*Gerald Cathey*
- 3:45 - 4:00 *Written Examination*  
*I. B. Bender*
- 4:00 - 4:10 *Grading of Written Examination*  
*Michael Heuer*
- 4:10 - 4:25 *Case Histories*  
*Richard Moodnik*
- 4:25 - 4:40 *Oral Examination - Format and Grading*  
*Dudley Glick*
- 4:40 - 5:00 *Questions and Answers*

**2:00 - 5:00**

**SYMPOSIUM - "ENDODONTIC FUTURE SHOCK" (071 - 072)  
Beverly Hills Room**

*Moderator: George Zurkow*

*Speaker: Burton Press, Pittsburg, CA*

*Speaker of the House of Delegates of the American Dental Association and Past President of the California Dental Association.*

Change can be exciting - too much excitement can initiate emotional and physical distress! What is the future of specialties in the American delivery system, and what will be your role? How can AAE, ADA and other organizations be constructive, relevant and potent in determining or ameliorating the future? How do ethics, professionalism and the regulations of government agencies affect your future practice decisions?

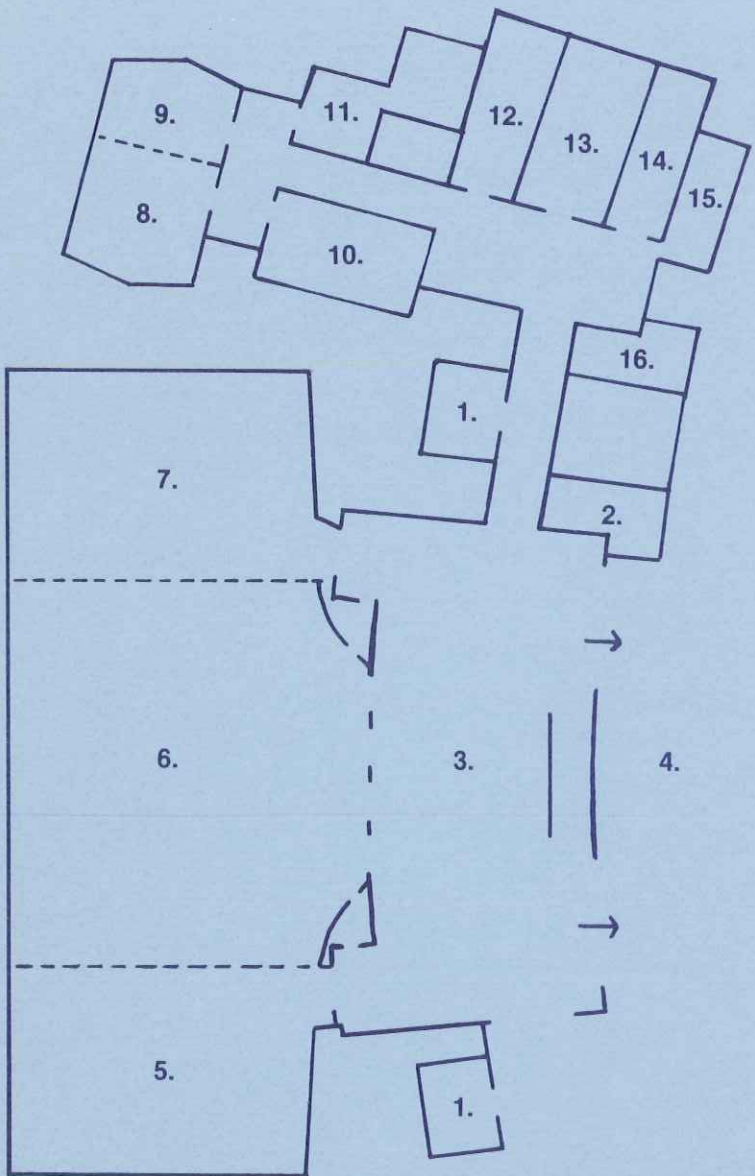
*Speaker: Howard V. Stambler, Hyattsville, MD*

*Director, Division of Manpower Analysis, Bureau of Health Manpower, HEW. Directs programs of health manpower research analysis and policy studies of supply requirements and geographic distribution past, present and future.*

Discussion of dental manpower from a future perspective. Current problems related to access areas and some of the dental manpower access problems, especially the manpower shortage areas, will be covered.

*continued on page 14*

# CALIFORNIA LEVEL FLOOR PLAN



- |                                      |                          |
|--------------------------------------|--------------------------|
| 1. Elevators                         | 9. Palisades             |
| 2. AAE Headquarters                  | 10. Brentwood            |
| 3. California Lounge - Registrations | 11. Bel-Air              |
| 4. Exhibit Hall                      | 12. Encino               |
| 5. Santa Monica                      | 13. Westwood             |
| 6. Los Angeles                       | 14. Sherman Oaks         |
| 7. Beverly Hills                     | 15. Malibu               |
| 8. Pacific                           | 16. Speakers' Ready Room |



# WOMEN'S AUXILIARY OF AAE CONDENSED PROGRAM

## WEDNESDAY, April 16, 1980

- 7:00 a.m.  
Tennis Tournament . . . . . Le Club, ABC Entertainment Center
- 7:30 a.m. to 7:00 p.m.  
Registration . . . . . Plaza Level & California Lounge
- 8:00 a.m.  
Buses leave for La Canada Flintridge C.C.  
(golf) . . . . . Century Plaza Hotel
- 5:00 p.m. to 6:00 p.m.  
"Hello L.A." —  
A Special Southern Cal. Welcome . . . . . Beverly Hills
- 6:00 p.m. to 8:00 p.m.  
Early Arrivals Get-Together . . . . . California Lounge and  
Beverly Hills

## THURSDAY, April 17, 1980

- 6:00 a.m.  
Buses leave for El Rancho Park  
(6K run) . . . . . Century Plaza Hotel
- 7:30 a.m. to 5:00 p.m.  
Registration . . . . . California Lounge
- 9:00 a.m. to 3:00 p.m.  
Universal Studio Tour and Luncheon . . . . . \*
- 9:30 a.m. to 2:30 p.m.  
J. Paul Getty Museum Tour . . . . . \*
- 3:30 p.m. to 5:00 p.m.  
Auxiliary Board Meeting . . . . . Bel-Air
- 6:30 p.m. to 8:00 p.m.  
AAE President's International  
Reception . . . . . Los Angeles/Beverly Hills

## FRIDAY, April 18, 1980

- 7:30 a.m. to 5:00 p.m.  
Registration . . . . . California Lounge
- 9:00 a.m. to 2:00 p.m.  
Beverly Hills Highlights Tour . . . . . \*
- 9:30 a.m. to 5:30 p.m.  
Visit to Disneyland . . . . . \*

## SATURDAY, April 19, 1980

- 8:00 a.m. to 2:00 p.m.  
Registration . . . . . California Lounge
- 9:00 a.m.  
"A Morning Affaire" (Breakfast &  
installation of officers) . . . . . Senor Pico's  
Tamara Selden, speaker
- 12:00 noon to 2:00 p.m.  
Edgar D. Coolidge Memorial Luncheon . . . . . Los Angeles  
Nathan Pritikin, speaker
- 2:30 p.m.  
"An Afternoon Affaire" - Tamara Selden . . . . . Senor Pico's
- 7:00 p.m. to 8:00 p.m.  
AAE Past President's Reception . . . . . California Lounge
- 8:00 p.m. to 1:00 a.m.  
Annual Dinner Dance . . . . . Los Angeles Ballroom

\*Buses leave from Century Plaza Hotel

**THURSDAY, April 17, 1980 continued**

*Speaker: Herbert Schilder, Boston, MA*

Dentistry enters the 1980's as a profession under siege. Endodontics is not immune to the powerful external forces affecting the entire profession. Clarification of issues and framing of effective responses will allow us to maintain our position of public service. Shrinking away from the issues will accelerate the painful personal and professional dislocations first articulated at our San Diego meeting in 1974.

**6:30 - 8:00**

**PRESIDENT'S INTERNATIONAL RECEPTION  
Los Angeles Room and Beverly Hills**

*Co-hosted by the Southern California Academy of Endodontics, the Northern California Academy of Endodontics and the San Diego Endodontic Seminar.*

(Admission by ticket and badge only)

**HAVE YOU MADE YOUR  
BANQUET RESERVATIONS?**

Remember please, that vouchers must be turned in for tickets when you select tables for the Saturday dinner dance before Noon, Friday, April 18.

**FRIDAY, April 18, 1980**

**9:00 - 12:00**

**THE CLINICAL APPLICATION OF BIOLOGIC KNOWLEDGE (081 - 082)**  
**Santa Monica Room**

*Moderator: I. B. Bender*

9:00 - 10:30 *"The Clinical Application of Biologic Knowledge"*  
*Presenter: Harold R. Stanley, B.S., M.S., D.D.S.*  
*Professor and Chairman Department of Oral Medicine and Director of Pulp Registry, University of Florida*

*Clinicians: Manuel I. Weisman, Augusta, GA*  
*Norman A. Jester, Memphis, TN*  
*Frederick L. Cox, Wetmore, TX*  
*Jacob B. Freedland, Charlotte, NC*

**Synopsis:** For several years the pulp registry has been a viable activity. In addition to solving clinical problems for endodontists and general practitioners, like all registries, many unusual cases appear that force us to expand our knowledge of pulp biology. A few of these cases will be presented in detail.

10:30 - 12:00 *"Sensation in the Normal and Inflamed Pulp"*  
*Presenter: Henry Trowbridge, D.D.S., Ph.D.*

**Synopsis:** Despite our close attention to the tooth as a source of discomfort, understanding of the pulp as a sensory organ is limited. Mechanisms involved in the pulpal response to thermal, mechanical and inflammatory stimuli will be examined. The discussion will provide an integrative approach to pulp physiology, pathology and endodontics.

**9:00 - 12:00**

**GRADUATE STUDENT RESEARCH SEMINAR (091 - 092)**  
**Pacific Palisades**

*Moderator: Joseph Tenca*

- 9:00 - 9:25 *Clinical study of patient reaction to pulp testing instruments.*  
*R.S. Kidder\*, R.J. Michelich, R.E. Walton,*  
*Medical College of Georgia*
- 9:25 - 9:50 *The effect of chlorhexidine gluconate on the root canal flora of freshly extracted necrotic teeth.*  
*Gael Delany, Indiana University*
- 9:50 - 10:15 *A scanning electron microscopic evaluation of sodium hypochlorite in the cleaning and shaping of human root canal systems.*  
*Jeffrey Daughenbaugh, Boston University*
- 10:15 - 10:40 *Cutting efficiency of endodontic instruments.*  
*J. Webber\*, R. Villalobos\*, J.B. Moser, M. Heuer,*  
*G. W. Marshall, Northwestern University*

**FRIDAY, April 18, 1980 continued**

10:40 - 11:05 *Scanning electron microscope and dye penetration study of root canal obturation using thermatically condensed gutta percha.*  
*Emma Koukol, Harvard University*

11:05 - 11:30 *Carcinogenic potential of chloroform as used in endodontics.*  
*Linda Linari, University of Washington*

11:30 - 12:00 *Effects of endotoxin on the periapical tissues of cat.*  
*Thomas Dwyer\*, Mahmoud Torabinejad, Loma Linda University*

**9:00 - 12:00**

**SYMPOSIUM ON DENTAL MALPRACTICE (101 - 102)  
Beverly Hills Room**

*Moderator: Bert Wolfsohn*

*"Avoiding Malpractice" 1) Public Relations, 2) Record Keeping  
Clinician: Jack Weichman, Los Angeles, CA (Endodontist - Attorney)*

*"Endodontic Related Malpractice"  
Clinician: Edward Zinman, San Francisco, CA (Periodontist - Attorney)*

*"The Role of the Dentist as a Defendent and as an Expert"  
Clinician: Norman Schafler, Los Angeles, CA (General Practitioner - Attorney)*

**Synopsis:** This symposium is presented by three dentist/attorneys who practice law and specialize in dental malpractice. There is an ever increasing number of dental malpractice suits and dentists can minimize their chances of being sued by following certain procedures discussed by the panel. In addition to discussing the role of the dentist as a defendent and as an expert, the panel will discuss how the plaintiff's attorney evaluates a potential dental malpractice action.

**12:00 - 2:00**

**LUNCH ON YOUR OWN**

**2:00 - 5:00**

**SYMPOSIUM ON THE USE OF ROOTS AND ROOT SUBSTITUTES (111 -112)  
Santa Monica Room**

*Moderator: Ernst Ehrmann*

*"Endodontic Root Retention and Its Clinical Application in the Overdenture Technique to Maintain Alveolar Bone"  
Clinician: James Kimura, San Diego, CA*

**Synopsis:** A six year study of the clinical application of endodontic root retention in the overdenture technique utilizing the Zest Anchor attachment, bar-splint method, crown amputation, "buried root technique", and the intentional reimplantation of endodontically treated roots.

**FRIDAY, April 18, 1980 continued**

*"Submergence of Roots"*

*Clinician: Carlos del Rio, San Antonio, TX*

**Synopsis:** Research in "Submergence of Roots" will be discussed in three phases. In the first phase teeth were endodontically treated, sectioned, reduced in size, so that each root was approximately 2 mm below the alveolus, and totally submerged. In the second phase root canal therapy was accomplished, and the teeth were extracted, contoured, reimplanted, and submerged. In the third phase, an attempt to inhibit resorption and ankylosis of replanted roots were made by coating the root segment with biodegradable compound.

*"Artificial Tooth Replacement Systems"*

*Clinician: Ronald Voss, D.D.S.*

*Chairman, Department of Dental Materials and Co-chairman Oral Implantology Program, University of Southern California*

**Synopsis:** Dental implants are rapidly becoming a safe, practical method of helping to restore the integrity of dental function and esthetics, intraosseous implants, properly placed and restored, can help to preserve the supporting alveolar bone, help to support periodontally involved teeth and allow the dental patient to have fixed rather than removable appliances. This presentation will show the different implant systems available to the dentist and discuss the allied restorative procedures.

**2:00 - 5:00**

**ENDODONTIC RESEARCH SEMINAR (121-122)**  
**Pacific Palisades**

*Moderator: John Ingle*

- 2:00 - 2:25     *The pulpal effects of orthodontic tooth movement.*  
*Jerry Taintor, University of California Los Angeles.*
- 2:25 - 2:50     *Study of IgE antibody in human dental periapical lesions,*  
*with immunal peroxidase techniques.*  
*Mahmoud Torabinejad\*, James Kettering,*  
*Loma Linda University*
- 2:50 - 3:15     *Determination and Quantification of immunoglobulins*  
*(IgA, IgG, IgM) and component C3 and C4 of the com-*  
*plimentary system in serum of primary molars pulp blood*  
*using the laser nephelometer.*  
*Sergio Kuttler, Mexico City, Mexico*
- 3:15 - 3:40     *A histologic study of hydron as a root canal filling material*  
*in monkeys.*  
*John Tanzilli\*, Alan Nevins, Bernard Borden,*  
*Nassau County Medical Center, NY*
- 3:40 - 4:05     *Cyclic AMP and cyclic GMP in human dental pulps and*  
*their relationship to pulpitic pulps.*  
*Alan Sproles\*, Herbert Schilder, L.D. Schaeffer*  
*Visalia, CA*
- 4:05 - 4:30     *The dynamics of microcirculation in the dental pulp: an*  
*in vivo microscopic approach.*  
*Syngcuk Kim, Columbia University*

**FRIDAY, April 18, 1980 continued**

4:30 - 5:00 *A study of freeze-dried (Lyophilized) cortical bone and dentin used as apical barriers in adult monkey teeth.*  
*Roman Rossmeis, Al Reader\*, Rudy Melfi,*  
*Ohio State University*

2:00 - 5:00

**CLINICAL AND SCIENTIFIC ESSAYS (131 - 132)**  
**Beverly Hills Room**

*Moderator: Stephen Cohen*

2:00 - 2:30 *"A Sono-Synergistic System for Endodontics"*  
*Howard Martin, J.P. Norris, Walter Cunningham*  
*Washington, D.C.*

An ultrasonic system has been developed for endodontic filing, irrigation and obturation. A quantitative model has been designed to determine the effectiveness of the Sono-Synergistic System.

2:30 - 3:00 *"Creative Splinting"*  
*Albert Goerig, Fort Knox, KY*

Four basic splinting techniques and indications for each will be presented. They are the acid etch donut splint, acid etch wire splint, suture splint and the cemented acrylic bite plane.

3:00 - 3:30 *"Determining Root Canal Length by Sound and/or Luminescent Diode"*  
*Noboru Inoue, Tokyo, Japan*

The Sono-Explorer will be discussed with regard to its mechanism, contraindications, comparison to conventional radiographic control methods and its accuracy.

3:30 - 4:00 *"Expanded Uses of Calcium Hydroxide"*  
*Raymond Webber, Gainesville, FL*

This presentation will be in two phases. The first, the didactic will cover the indications, advantages, theories of the mechanism of calcification and many clinical considerations. The second phase, case presentation will emphasize the resolution of periapical or lateral rarefactions, halting of inflammatory resorption and the formation of an apical calcified stop or the repair of perforated roots.

4:00 - 4:30 *"Thermocondensor: An Automated Thermo-mechanical Compactor for Gutta Percha"*  
*John McSpadden, Johnson City, TN*

This new method and instruments for compacting warm gutta percha will be presented.

4:30 - 5:00 *"A Study of Hydron as an Endodontic Filling Material"*  
*Fernando Goldberg, Buenos Aires, Argentina*

*continued on page 19*

**FRIDAY, April 18, 1980 continued**

This study evaluates the behavior of Hydron as an endodontic filling material. The scanning electron microscope showed that Hydron has good adaptation to the dentinal walls but a deficient apical seal results from dimensional changes, solubility, and incomplete setting in the presence of humidity. In addition the complicated technique and the short working time make it a filling material with more difficulties than advantages.

## SATURDAY, April 19, 1980

9:00 - 12:00

### SYMPOSIUM ON FILLING MATERIALS AND TECHNIQUES (141 - 142) Santa Monica Room

*Moderator: Jose Oynick*

9:00 - 10:30 *"Calcium Hydroxide - Its Various Uses"*  
*Clinician: Roberto Holland*

Calcium hydroxide has been used in odontology under different clinical conditions. However, its application as a root canal filling material has been the subject of discussion due to contradictory results presented in the literature. Experimental work carried out by us demonstrated that the results with calcium hydroxide in root canal treatment can be influenced in a favorable or unfavorable way by many factors. Those observations explain in part the discordant results in the literature.

10:30 - 12:30 *"The Development of Eco-Mechanical Canal Preparation"*  
*Clinician: Mitsuru Otani, D.D.S., D.D.Sc.*  
*Head Instructor of the Otani Endodontic Society and Lecturer, Post Graduate Courses Tokyo Medical and Dental College. Frequent international lecturer.*

Historically endodontics relied mainly on drugs, and/or mechanical means for canal preparation. In place of these we use mechanical means together with the means to promote homeostasis which is inherent in the human body. By means of this eco-mechanical canal preparation we have obtained better clinical results in obturation than by traditional methods.

9:00 - 12:00

### TABLE CLINICS

Pacific Palisades and Brentwood

*Moderators: Leif Bakland and Anthony Greening*

### Graduate Student Section - Brentwood

1. **The Gow-Gates Technique for Mandibular Block Anesthesia**  
*Michael Piccinino, Frank Patonai, Jr.*  
*University of Southern California*
2. **Stress in Dentistry**  
*Gregory O'Toole, University of Iowa*
3. **Root Canal Morphology of Human Mandibular First and Second Bicuspids**  
*Nosratollah Rahbari, University of Iowa*
4. **Endodontic Anesthesia**  
*Michael Gaynor, University of Illinois*
5. **Evaluation of Endodontic Procedures Using a Cleared Teeth Model**  
*Don Robertson, Michael McKee*  
*University of North Carolina*



**SATURDAY, April 19, 1980 continued**

6. **A Survey: Controversies in Treatment and Retreatment**  
*Jerald Smith, John Crisp, University of North Carolina*
7. **Forced Eruption to Save Unrestorable Teeth**  
*Richard Hunter, Steve Buchanan, Temple University*
8. **Thermoplastisized Gutta Percha and Lateral Condensation**  
*Tom King, Carl Newton, Indiana University*
9. **Dam It!**  
*Barry Rhome, Albert Einsteins - University of Pennsylvania*

**Nongraduate Section - Pacific Palisades**

10. **Periodontal Surgical Procedures to Enhance Endodontic Therapy**  
*Erwin Barrington, Chicago, IL*
11. **Preventive Anginal Treatment**  
*Manuel Weisman, Augusta, GA*
12. **When and How the Apical Amalgum is Used**  
*Bernard Metrick, Brooklyn, NY*
13. **Study on Endodontic Treatment of Infected Root Canal in One Visit**  
*Hisashi Nagasawa, Hiroyoshi Nakamuta, Fukuoka City, Japan*
14. **Efficient Molar Access Preparation - The Use of the Safe-Sided Diamond**  
*Donald Antrim, Bethesda, MD*
15. **An Intraseous Injection Technique**  
*Dennis Longwill, Larry Sorum, Aurora, CO*
16. **Treatment of Perforations in the Molar Pulp Chamber**  
*Antonio Elias Makaron, Moacyr Natale Macedo  
Sao Paulo, Brazil*
17. **3-D X-Rays: How and When**  
*Richard Weinberg, Los Angeles, CA*
18. **Cyanoacrylate: Its Use in Improving the Rubber Dam Technique and in Periapical Surgery**  
*Gabriel Perez Herrerias, Carlos Koloffon Lopez  
Mexico City, Mexico*
19. **The Morphologic Connection**  
*Reginald Hession, Sidney, Australia*
20. **Routine Endodontic Treatment with Assured and Documented Success Rate in One Appointment**  
*Kurt Redtenbacher, Vienna, Austria*
21. **Diagnosis of Endodontic Diseases Using Kinesiology, Homeopathy and EAV**  
*James Ouye, San Jose, CA*
22. **A Comparison of Anaerobic Specimen Collection in Endodontics**  
*Phil Devore, Rich Massoth, Los Angeles, CA*

**SATURDAY, April 19, 1980 continued**

**23. In With In**

*Robert V. Weissman, Fairlawn, NJ*

**24. Evaluation of the Compactor Technique Using the Cleared Tooth Model**

*Jeff Foster, Austin, TX*

**25. Have You Really Seen What's On Your Radiograph?**

*Richard E. Walton, Augusta, GA*

**26. Cytogenic smear test and its relation to clinical examination.**

*Jiro Tomura, Chiba, Japan*

**9:00 - 12:00**

**SYMPOSIUM ON HOW TO MAKE YOURSELF SWINDLE PROOF (151-152)  
Beverly Hills Room**

*Moderator: Wayne Bemis*

*Clinician: G. Barton Heuler, D.D.S., Orange, CA*

*Dr. Heuler is a 1954 graduate of the USC School of Economics and a 1963 graduate of the USC School of Dentistry. He has been active in the practice of general dentistry, and for the past several years has devoted his full time to the development and management of numerous economic projects in Southern California.*

*Because of his experience as a professional man, Dr. Heuler has an excellent grasp of the investing problems faced by the rest of the profession. This, with his academic background and practical, real world experience, has made Dr. Heuler exceptionally well-qualified as an investment advisor to the professional man.*

Physicians and dentists have become the object of every con-artist because of the funds they have available. Although they are well trained in their field, they have little or no training in evaluation of investments. Therefore, it is critical that the doctor learns how to tell a good investment from a bad one.

**12:00 - 2:00**

**EDGAR D. COOLIDGE MEMORIAL LUNCHEON (160)  
Los Angeles Room**

*Chairman: Alfred L. Frank*

**"Nutritional Therapy - A New Look at Conventional Medical Care"**  
*Speaker: Nathan Pritikin*

*Mr. Pritikin is founder and Director of the Longevity Research Institute, Santa Barbara, California. The center and Institute were established to develop and implement nutrition and exercise programs aimed at restoring people suffering from degenerative diseases to better health.*

*He is co-author of the widely acclaimed book on nutrition, exercise and degenerative diseases, **The Pritikin Program for Diet and Exercise**, author of the best-selling book, **Live Longer Now** and is an Honorary Fellow of the International Academy of Preventive Medicine. This may be the most important lecture you will ever attend.*

**SATURDAY, April 19, 1980 continued**

**2:00 - 3:30  
CLINICAL AND SCIENTIFIC ESSAYS (170)  
Santa Monica Room**

*Moderator: Stephen Cohen*

2:00 - 2:30     *"Advances in Apexification"*  
*Enrique Basrani, Buenos Aires, Argentina*

Long-term radiographic follow-ups from applications of calcium hydroxide to encourage apexification.

2:30 - 3:00     *"Pain Control - Some New Insights"*  
*H. David Prensky, Mexico City, Mexico*

While it is a subject still wrapped in mystery and Melzack's characterization - The Puzzle of Pain - remains an apt one, some new clues enable us to fit some of the pieces together.

3:00 - 3:30     *"Xeroradiography"*  
*Stuart White, Los Angeles, CA*

The theory and current state of xeroradiography will be presented along with its potential uses in clinical endodontics.

**3:30 - 5:00  
GENERAL ASSEMBLY MEETING  
Pacific Palisades**

**7:00 - 8:00  
PAST PRESIDENTS' RECEPTION  
California Lounge**

**8:00 - 1:00  
ANNUAL DINNER DANCE  
Los Angeles Ballroom**

## SUNDAY, April 20, 1980

9:00 - 12:00

### EDUCATIONAL RESOURCES Pacific Palisades and Brentwood

Moderators: Anthony Greening and Arthur Spenst

1. **"Medlers"/"Medline"/"Sdiline" Literature Search Facility**  
(Computer terminal linked by telephone to the computerized information retrieval system of the National Library of Medicine giving printout of applied for bibliographics, etc.)  
Tony Greening, Frank Mason, University of Southern California
2. **The Rubber Dam (16 mm film)**  
E.H. Ehrmann, Royal Dental Hospital, Melbourne, Australia
3. **Transparent Plastic Blocks Simulating Root Canals: Their use in teaching preclinical endodontics (Table clinic)**  
Arthur Spenst, Loma Linda University
4. **One Visit Endodontics (Videotape)**  
Stephen Cohen, University of the Pacific
5. **Endodontic Diagnosis (Videotape)**  
Stephen Cohen, University of the Pacific
6. **Use of Human Skulls in Teaching Preclinical Endodontics (Table clinic)**  
Laurence Cree, University of Southern California
7. **i) Pulp Testing and Evaluation (Videotape)**  
Richard Madden, University of Texas
8. **ii) Canal Fillings (Videotape)**  
Richard Madden, University of Texas
9. **iii) Reevaluation (Videotape)**  
Richard Madden, University of Texas
10. **Access Preparation (Videotape)**  
Richard Madden, University of Texas
11. **Video Taping of Student Case Presentation (Videotape)**  
Richard Madden, University of Texas
12. **Cleansing and Shaping of Canals for Warm Gutta Percha (Videotape)**  
Nguyen Nguyen, University of California, San Francisco
13. **Vertical Compaction of Warm Gutta Percha (Videotape)**  
Nguyen Nguyen, University of California, San Francisco
14. **Endodontic Post Treatment Pain (Videotape)**  
Garth James, University of Nebraska
15. **Overdentures (Videotape)**  
Jerry Taintor, University of California, Los Angeles
16. **A series of endodontic teaching films**  
Angel Lasala, University of Zulia Grano De Oro, Maracaibo, Venezuela

## 1980 AAE EXHIBITORS

<i>Name/Address</i>	<i>Booth No.</i>	<i>Name/Address</i>	<i>Booth No.</i>
Ada Products, Inc. P.O. Box 17509 Milwaukee, WI 53217	12	Lincoln Dental & Medical Supply 1317-21 W. Nedro Ave. Philadelphia, PA 19066	42
AMADENT/American Medical &Dental Corp. P.O. Box 3422 Cherry Hill, NJ 08034	34	Medidenta Dental Supply Corp. 39-23 62nd Street Woodside, NY 11377	45
Analytic Technology Corp. 3301 181st Place, N.E. Redmond, WA 98052	20	Microcopy 1174 Tourmaline Dr. Newbury Park, CA 91320	23
Columbus Dental 634 Wager St. Columbus, OH 43206	30	Mosby Company, The C.V. 11830 Westline Industrial Dr. St. Louis, MO 63141	27
Encyclopaedia Britannica 425 North Michigan Chicago, IL 60611	39	Mynol, Inc. 600 Parkway Broomall, PA 19008	22
Future Management Systems 450 Sutter Street San Francisco, CA 94108	6-7	Practice Management, Inc. Box 686 Bloomfield Hills, MI 48013	37
Healthco, Inc. 25 Stuart Street Boston, MA 02116	24	Phone Ware, Inc. 7534 La Jolla Blvd. La Jolla, CA 92037	25
Hu-Friedy Mfg. Co., Inc. 3118 N. Rockwell St. Chicago, IL 60618	11	Premier Dental Products Co. 1710 Romano Drive Norristown, PA 19401	47
Hygenic Corp., The 1245 Home Avenue Akron, OH 44310	48	Pulpdent Corp. of America 75 Boylston Street Brookline, MA 02147	28
ITI 2112 North Roan St. Johnson City, TN 37601	49-50	Ransom & Randolph Co. 324 Chestnut St. Toledo, OH 43604	32
Ives Laboratories, Inc. 685 Third Avenue New York, NY 10017	2	Schwed Co. Inc., Charles B. 138 Audley Street Kew Gardens, NY 11418	1
Knoll Pharmaceutical Co. 30 No. Jefferson Rd. Whippany, NJ 07981	8	Southeastern Omni P.O. Box 735 Griffin, GA 30224	10
Lee Pharmaceuticals 1444 Santa Anita Ave. So. El Monte, CA 91733	38	Star Dental/A Syntex Dental Co. P.O. Box 896 Valley Forge, PA 19482	21

**AAE EXHIBITORS continued**

<i>Name/Address</i>	<i>Booth No.</i>
Sultan Chemists Inc. 85 W. Forest Ave. Englewood, NJ 07631	29
Sybron Dental Products Div./Kerr 28200 Wick Road Romulus, MI 48174	41
Tele-Com Office Products, Inc. 2100 E. Foothill Blvd. Pasadena, CA 91107	31
Total Medical Systems 7730 Clairemont Mesa Blvd. San Diego, CA 92111	43
Union Broach Corp. 36-40 37th Street Long Island City, NY 11101	13 - 14
Unitek Corp. 2724 So. Peck Road Monrovia, CA 91016	3 - 4 - 5
U.S. Air Force Nationwide Advertising Service Inc. 6400 N. Central Exp. #920 Dallas, TX 75206	46
Whaledent International 236 Fifth Avenue New York, NY 10001	18
Xerox Medical Systems P.O. Box 5786 Pasadena, CA 91107	15-16-17

## PRESCHEDULED COMMITTEE MEETINGS

Friday, April 18, 1980  
12:00 - 2:00 - Mezzanine Level

Constitution and Bylaws  
Dental Care Programs & Peer Review  
Editorial Board  
Education  
Honors and Awards  
International Relations  
Public and Professional Affairs

## STUDY CLUB AND ALUMNI GROUP PARTIES

Friday evening, April 18, 1980

Army Endo Group Dinner, 6:30 . . . . .	Senor Pico's Restaurant
Boston Univ. Endo Alumni, 7:00 . . . . .	Sherman Oaks Room
Harry Healey Endo Study Club, 6:30 . . . . .	Encino Room
USC Alumni, 6:00 . . . . .	Al Frank's Suite
Univ. of Washington Endo Alumni . . . . .	Brentwood Room
Northwestern Endo Alumni . . . . .	Bel Air Room

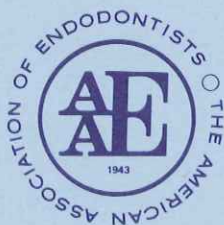
Saturday morning, April 19, 1980

Boston Univ. Endo Alumni B'fast, 7:30 . . . . .	Directors Room, Mezzanine
Navy Breakfast, 7:30 . . . . .	Westwood Room

**NOTE: IF YOUR GROUP IS NOT LISTED, PLEASE SEE THE SIGN IN THE REGISTRATION AREA.**

## NOTES





**AAE CENTRAL OFFICE**

P.O. Box 11728, Atlanta, Georgia 30355

Phone: (404) 237-6866

Mrs. Elenore L. Baker, executive director

38th Annual Session

April 29 - May 3, 1981

Franklin Plaza Hotel

Philadelphia, Pennsylvania

39th Annual Session

April 21 - 25, 1982

Hyatt & Adams Hotels

Phoenix, Arizona

40th Annual Session

April 20 - 24, 1983

Diplomat Hotel

Hollywood, Florida

41st Annual Session

April 25 - 29, 1984

Royal York Hotel

Toronto, Ontario