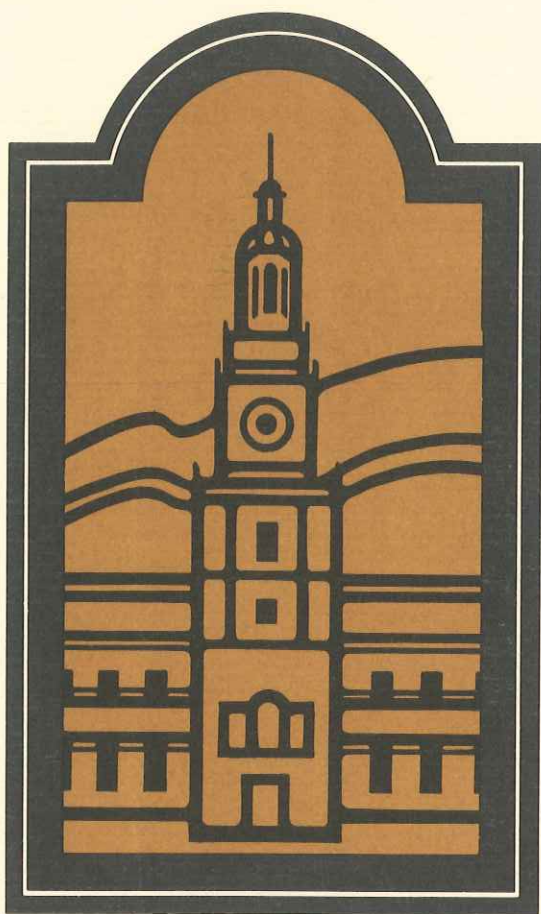


# BEYOND THE ROOT CANAL — THE TOTAL PATIENT

38th Annual Session  
American Association of Endodontists  
Franklin Plaza Hotel  
Philadelphia, Pennsylvania  
April 29-May 3, 1981

Archive Copy  
Do Not Remove



CLAUDIA'S

## WHERE TO FIND

AAE Officers/Board of Directors	2
Annual Session Committees	4
Award Recipients	32
Committee Meetings	32
Condensed Program	Centerfold
Exhibitors' List	26
Floor Plan/Meeting Rooms	Centerfold
General Information	5
Participant's Index	30
Presidents' Message	1
Program Chairman's Welcome	3
Program	
Wednesday	8
Thursday AM	8
Thursday PM	11
Friday AM	14
Friday PM	17
Saturday AM	19
Saturday PM	24
Sunday AM	25
Study Clubs/Alumni Groups	32
Spouse/Social Events	Centerfold
Women's Auxiliary	4

### INSIDE BACK COVER

ABE Board of Directors  
E & M Foundation Trustees  
Past Presidents  
Honorary Members

## PRESIDENT'S MESSAGE

It is my privilege to welcome you to the 38th Annual Session of the American Association of Endodontists. It has been ten years since we last met in this beautiful and historic city. In the interim, it has grown in beauty, facility and attraction. I am confident that you will thoroughly enjoy your visit.

Philadelphia has long been recognized as a leader in endodontic education and research. Our meeting this year will certainly follow in that same fine tradition.

Our scientific program has been designed to satisfy a broad range of interests of the clinician, researcher and educator in Endodontics. There is an increasing number of patients who are medically compromised. The special problems that these patients present make it imperative that we become thoroughly knowledgeable in their management. Our theme for the meeting, "Beyond the root canal — the total patient," was selected in order to provide us with the opportunity to broaden and update our biomedical knowledge as it relates to clinical practice.

The non-scientific functions, including the Women's Auxiliary activities, provide us outstanding social, cultural and entertainment opportunities. If we take advantage of all the opportunities presented at this meeting, it will truly be one of our very best ever.

I wish to express my deepest appreciation to our Program Chairman, Chuck Cunningham, for his tireless efforts in putting together this outstanding program. Only a true friend would have agreed to take on this awesome task. I extend this appreciation to all his committee chairmen and members, especially Carl and Sydney Tinkelman, whose energy and imagination are excelled only by their dedication. They have done all that is possible to make this meeting an outstanding success. The rest is up to you.

**Edward M. Osetek, DDS, MA**  
President

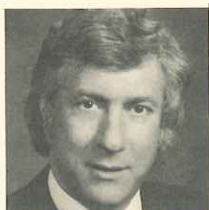
# AMERICAN ASSOCIATION OF ENDODONTISTS



Edward M. Osetek  
President



Henry J. Van Hassel  
President-Elect



Noah Chivian  
Vice-President



Donald E. Arens  
Treasurer



Michael A. Heuer  
Secretary



Irving J. Naidorf  
Editor

## BOARD OF DIRECTORS

### 1981

Charles J. Cunningham  
Gerald C. Dietz  
H. David Prensky

### 1982

Duane E. Compton  
James L. Gutmann  
Burton Kunik

### 1983

Lester M. Breen  
Bernard J. Grothaus  
Stephen F. Schwartz

## EX OFFICIO MEMBERS

Immediate past president:

Student representative:

Executive Director:

Paul E. Zeigler

Alan T. Azar

Irma S. Kudo (without vote)



## WELCOME TO PHILADELPHIA

The 1981 Annual Session of the AAE awaits your participation. A multitude of enthusiastic and aggressive ideas have been blended into this meeting to entice your professional, historical and social appetites.

A preview of the schedule will encourage the individual to formulate a "personalized" experience to maximize his/her commitment to participate. Prominent dental educators will discuss total patient care. Training sessions will arouse the hesitant practitioner to share clinical experiences and research findings by publication and to "speak out" for dentistry and endodontics. The research symposia will tune you to the future, while the clinical essayists and table clinicians concentrate on meaningful "chairside" endodontics of today. Innovative discussion and panel groups have been added to stimulate widespread interaction of ideas. Truly, a "something for everyone" happening.

My personal thanks to the many colleagues responsible for this annual session. The complementary roles of Carl and Sydney Tinkelman must be singled out for special commendations, for the myriad details that make up an annual session were their burden. My special thanks to Ed Osetek for his unquestionable confidence in the program chairman and the local arrangements chairman. My deepest gratitude to Irma Kudo for unfailing guidance, assistance and understanding.

**Charles J. Cunningham, DDS**  
Program Chairman

# 1981 ANNUAL SESSION COMMITTEES

## PROGRAM



Chairman  
Charles J.  
Cunningham

Clinical Essays	Richard E. Walton
Endodontic Round-	Manuel I. Weisman, chairman
table Seminars	Paul M. Vanek, co-chairman
Exhibits	M. Lamar Hicks, chairman
	Dot B. Thurston, manager
Research Symposium	Melvin Goldman
Scientific Symposium	Charles J. Cunningham
Table Clinics	W. Craig Bell
Educational Symposium	Duane E. Compton
Printed Program	Irma S. Kudo

## GENERAL ARRANGMENTS



Chairman  
Carl L.  
Tinkelman

Registration	Allan H. Cetron
	Norman A. Dinnerman
Banquet	Bernard Evans
Hosts	Louis E. Rossman
	Alan M. Barnett
Luncheons	Wesley E. Bramnick
	James R. Granite
Audio-Visual	Marvin A. Gross
	Barry Rhome
Signs	Irving J. Kaufman
Sports & Special Events	Robert M. Krauss
	Lee Meadvin
Reception	Alan Kirsch
Ushers & Monitors	Ronald C. Garringer
	Frederic H. Siegal
Publicity	A. Maxwell Perlsweig
Endodontic Round-	
table Seminars	Mitchell Corson
Photographer	Albert C. Goerig

## WOMEN'S AUXILIARY COMMITTEE

Local Arrangements	Sydney Tinkelman
Registration	Sherry Olet
	Ruth Rappaport
Finance	Judie Bramnick
Hospitality	Polly Carrico
	Elaine Evans
	Goldanna Perlsweig
Tours	Fran Cetron
	Barbara Corson
Installation Brunch	Honey Parris
Sports Program	Valerie Rossman

Tours arranged by Culture Tours  
— Barbara Corson and Carol Holtzman

---

**BADGES MUST BE WORN AT  
ALL OFFICIAL AAE FUNCTIONS**

---

# GENERAL MEETING INFORMATION

## AAE Headquarters Office

The Headquarters Office is located in Meeting Room 8 and will be staffed by Central Office personnel – Betty Brown, Maria Oliveros and Laura Cancilla. Office hours are 8:00 a.m. – 5:00 p.m., Wednesday-Saturday, and 8:00 a.m.-12 Noon on Sunday.

## Cassette Tape Recordings

Eastern Audio Associates will record many of the sessions. The cassette tapes will be available for purchase at the EAA booth located in the exhibit hall. (Pacific Hall)

## Exhibits

The exhibits are located in Pacific Hall.

Exhibit hours are: Thursday 9:00 a.m.-6:00 p.m.

Friday 8:00 a.m.-5:00 p.m.

Saturday 8:00 a.m.-3:00 p.m.

Members and guests are encouraged to visit the exhibits as often and whenever possible.

## Drink Ducats

Ducats must be purchased in advance (at AAE Information Desk) for the Thursday Fellowship Reception at the University Museum. No ducats may be sold in the University Museum.

## General Registration

Wednesday 8:00 a.m.-7:00 p.m.

Thursday 8:00 a.m.-5:00 p.m.

Friday 8:00 a.m.-5:00 p.m.

Saturday 8:00 a.m.-2:00 p.m.

AAE Members (after March 25)	\$150.00 (includes 2 receptions, 2 luncheons, 3 continental breakfasts, one ticket to Dinner Dance)
Non-AAE Member professional	\$150.00 (scientific session only)
Dental Auxiliary Personnel	\$ 15.00 (includes 2 receptions)
Student	\$ 15.00 (includes 2 receptions)
AAE Women's Auxiliary Member	\$ 10.00 (includes 2 receptions, 1 continental breakfast, use of hospitality room, souvenir tote bag)
Non-Member Women's Auxiliary	\$ 12.50 (includes 2 receptions, 1 continental breakfast, souvenir tote bag)

## Endodontic Roundtable Seminar Information Desk

To pick up tickets reserved in advance, or to register for an open Endodontic Roundtable Seminar, the ERS Information Desk will be open as follows:

Wednesday, April 29 2:00 p.m.-6:00 p.m.

Thursday, April 30 9:00 a.m.-5:00 p.m.

Friday, May 1 7:30 a.m.-5:00 p.m.

Saturday, May 2 7:30 a.m.-11:00 a.m.

Each seminar is limited to 15 registrants and there is also a limit of 2 seminars per person.



### **Message Center**

If you need to contact an attendee during the day, please leave a note at the Message Center located near the registration area. You are also encouraged to check the Message Center periodically to see if there is a message for you.

### **Saturday Dinner Dance**

Please make your table selection for the Saturday Dinner Dance as soon as possible and before 12 Noon on Friday by exchanging your voucher for a banquet ticket at the registration desk. If you wish to make up a party, you must present a voucher for each person in your group in order to reserve the space. No exceptions can be made.

### **Smoking**

For the comfort of others, all smokers are requested to sit in the rear of the meeting rooms.

### **ADA Continuing Education Registry**

Individuals\* whose constituent societies, federal dental services or state boards of dentistry participate in the ADA Registry program will receive continuing education credits as follows:

5 credits for general attendance at Annual Session. This includes attendance at table clinics and/or exhibits.

Hour-for-hour credit for attendance at a scientific presentation of at least one hour's duration. This must be of a scientific or clinical nature.

A separate form for each presentation attended, as well as a separate form for general attendance, should be completed in detail, and deposited in the special box located at the AAE Registration desk.

\*Refers only to individuals from Connecticut, Georgia, Iowa, Maine, Massachusetts, Minnesota, New Hampshire, North Dakota, Rhode Island, South Dakota, Tennessee, Vermont, Wisconsin, U.S. Army, Veterans Adm.

### **Academy of General Dentistry**

Members of the Academy of General Dentistry may have their course forms validated at the AAE Headquarters Office, Room 8.

---

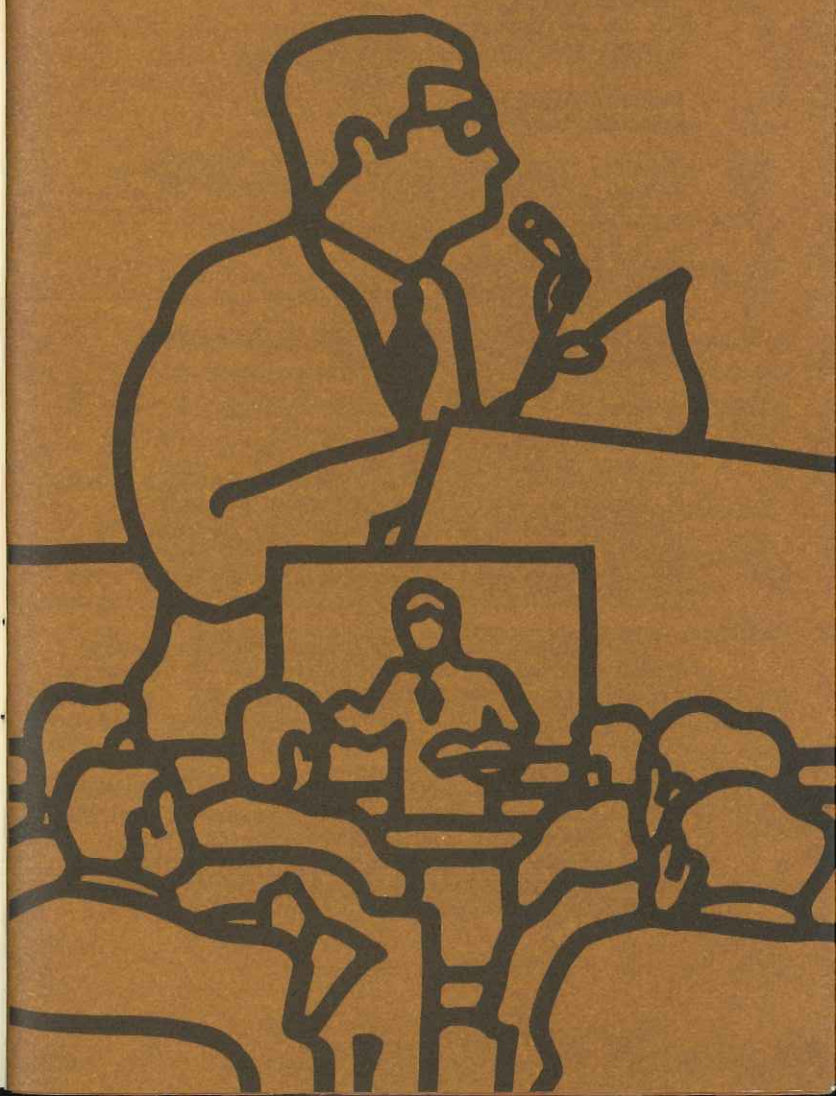
---

## **THURSDAY FELLOWSHIP RECEPTION**

Remember to purchase your drink ducats for this reception at the University Museum before 4:00 p.m. Thursday. We are not permitted to sell drink ducats at the Museum. Buses will depart at 6:00 p.m.



# PROGRAM



## WEDNESDAY, APRIL 29

### WEDNESDAY

- 9:00-5:00 **AAE Board of Directors' Meeting**  
**Room 2**
- 9:00-5:00 **ABE Oral Examinations**  
**Seminar A and Room 138**
- 9:00-5:00 **Continuing Education Course**  
**PAIN CONTROL IN ENDODONTICS**  
**Dominion Ballroom D**  
(Admittance by ticket purchased in advance.)
- 6:30pm-8:00 **EARLY ARRIVAL PARTY**  
**Dominion Ballroom Foyer**  
(All registrants and exhibitors invited to attend.)

## THURSDAY, A.M., APRIL 30

- 7:30 **CONTINENTAL BREAKFAST**  
**Dominion Ballroom A**  
(For AAE members and Women's Auxiliary members. Admission by ticket only.)
- OPENING SESSION**  
**Dominion Ballroom D**
- 8:30 Greetings: EDWARD M. OSETEK, DDS, MA; AAE President  
Address: ROBERT H. GRIFFITHS, DDS; ADA President-elect

### **SCIENTIFIC SYMPOSIUM** **Dominion Ballroom D**

#### **BEYOND THE ROOT CANAL — THE TOTAL PATIENT** Moderator: JOSEPH I. TENCA, DDS

- 9:00-12:00 Systemic status of the dental/endodontic patient and the utilization of laboratory medicine in endodontics.

ORDIE H. KING, JR., DDS, PhD, Professor of Pathology, Director of Laboratories, and Chairman, Department of Diagnostic Specialties (Sections of Pathology, Radiology, Medicine, Oral Medicine/Oral Diagnosis), School of Dental Medicine, Southern Illinois University at Edwardsville, Alton, Illinois; Private Practice: Director, Southern Illinois Pathology Laboratory, Godfrey, Illinois.

Technological advances in the past 20 years have markedly broadened the scope of laboratory medicine and simplified testing procedures. A plethora of laboratory tests is available on request, and all too frequently, superfluous laboratory tests are requested. A discussion of various laboratory screening tests and their value will be undertaken.

To demonstrate the value or lack of value of various screening tests, the findings of extensive laboratory screening of over 3,000 clinical patients at the Southern Illinois University School of Dental Medicine will be presented with a discussion of the relationship of these results to the prognosis of dental/endodontic treatment of those patients.

## **SPOKESMEN'S TRAINING FOR ENDODONTISTS**

### **Room 10**

Moderator: DUANE E. COMPTON, DDS, MSD

9:00- Clinicians: JOHN E. REGAN, DDS, Huntington, IN  
10:30 BARBARA RAFFERTY, Indianapolis

Dr. Regan, who maintains a general practice, is president of the Academy of General Dentistry and a member of the AAE. Mrs. Rafferty is public relations counsel to the AAE.

A capsule seminar to introduce members to techniques and tactics in meeting the challenge of communicating root canal therapy effectively to colleagues, the public and the news media. Participants will have an opportunity to objectively view their own performance in front of the TV camera, learn how to adapt speaking techniques to a variety of situations and, with Dr. Regan, learn how to develop positive relationships with the generalist.

10:30- **SPOKESMEN'S TRAINING FOR ENDODONTISTS**  
12 Noon (Repeat of above program.)

## **CLINICAL ESSAYS**

### **Dominion Ballroom C**

Chairman and Moderator: RICHARD E. WALTON, DMD, MS

9:00 Apical, lateral and cervical resorptions-pathology and clinic  
GUNNAR HASSELGREN, DDS, PhD, Philadelphia, PA

The etiology and treatment modalities of apical and lateral external inflammatory resorptions, strictly apical resorptions, and cervical resorptions will be discussed.

9:30 The cracked tooth syndrome: a new look at an old problem  
JOHN H. CHAMBERLIN, DMD, MS, Fort Benning, GA

The definition, causes, signs and symptoms (early, later, and ultimate) associated with the CTS will be covered. Twelve tests for proper diagnosis, including the correlation of cracked teeth with low Frankfort Mandibular Angle cases, are included.

10:00 Surgical management of the endodontically compromised palatal root  
RALPH BELLIZZI, DDS, Tacoma, WA

The indications, anatomical considerations and flap design for palatal root surgery of the endodontically-involved tooth are presented. The utilization of study models and a step-by-step case history will correlate the basic concepts with clinical application.

## **VISIT THE EXHIBITS**



- 10:30      Adjunctive orthodontics in endodontic therapy  
ORHAN C. TUNCAY, DMD, Lexington, KY

Adjunctive orthodontic procedures such as uprighting, alignment and extrusion of teeth establish the physiologic base for optimal dental therapy. A special interaction between endodontics and orthodontics will facilitate endodontic therapy or augment orthodontic tooth movement. Recent improvements in orthodontic appliances enable the endodontist to include orthodontic procedures in the overall treatment plan.

- 11:00      Unique solutions to problems of isolation  
DONALD D. ANTRIM, DDS, MS, Bethesda, MD

The presentation will center on endodontic cases requiring ingenuity of the operator to insure proper isolation of the operating field. Isolation techniques involving a bridge abutment, teeth with perforations below the alveolar crest, horizontal root fractures and resorptive defects will be highlighted.

- 11:30      Pathogenesis and treatment of vertical root fractures  
ROBERT J. MICHELICH, DDS, Augusta, GA  
RICHARD E. WALTON, DMD, MS, Augusta, GA

A vertical root fracture is a most damaging occurrence. The causes for the often rapid development of the accompanying inflammatory lesion and bone resorption are undetermined. Several roots with vertical fractures were examined histologically to determine the pathogenesis of the inflammatory lesion. These findings will be correlated with clinical signs and symptoms to suggest a rational approach to treatment.

- 12 Noon    **LUNCHEON — Dominion Ballroom A & B**

## THURSDAY LUNCHEON

### 12 Noon - Dominion A & B

Judge Lynne Abraham, Philadelphia common pleas judge, and her husband, Frank Ford, radio commentator, will present a two-person panel following the luncheon on the "Problems of Being in the Public Eye."

## SMOKING

For the comfort of others, all smokers are requested to sit in the rear of the room.

## SCIENTIFIC SYMPOSIUM Dominion Ballroom D

### BEYOND THE ROOT CANAL — THE TOTAL PATIENT

Moderator: MICHAEL A. HEUER, DDS,

- 2:00-5:00 The effect of collagen biosynthesis and collagen diseases on the endodontic patient

ARTHUR VEIS, PhD, Professor of Biochemistry and Chairman, Department of Oral Biology, Northwestern University Dental School; PhD in Physical Chemistry, Northwestern 1951; Special interest in biological polymers with focus on collagen structure and gelatin; Published extensively on collagen structure and biosynthesis; Engaged in studies of biological mineralization.

Collagen is the chief structural element of the dental pulp. It provides the substratum for the odontoblasts and all the dynamic aspects of tooth function depend on its status. The composition, nature and organization of the pulp connective tissue matrix will be examined. The metabolic processing within the pulp will be explored along with the problem of pulp capping.

## CLINICAL ESSAYS Dominion Ballroom C

Chairman: RICHARD E. WALTON, DMD, MS  
Moderator: LEIF K. BAKLAND, DDS

- 2:00 Endodontic implications of autotransplantation of teeth  
LEIF TRONSTAD, DMD, PhD, Philadelphia, PA

There is an increasing understanding that success or failure in autotransplantation of teeth to a great extent are dependent on the reactions of the dental pulp. The pulp reactions after autotransplantation will be discussed and therapeutic guidelines will be proposed.

- 2:30 The ultrasonic synergistic system for root canal debridement  
WALTER T. CUNNINGHAM, DDS, MS, MA, Bethesda, MD  
HOWARD MARTIN, DMD, Silver Springs, MD

An innovative system utilizing ultrasound has been developed for the rapid and effective preparation of the root canal space. The synergistic combination of ultrasound and flow-through irrigation leads to a dynamic, efficient ultrasonic system within biologic parameters. This ultrasonic synergistic system will be compared to conventional methods for its ability to clean the root canal and its irregularities.

- 3:00 An investigation of tissue reaction to diodontic implants in Macaca irus monkeys and the clinical implications of the study  
RICHARD JOHNS, PhD, LDS, RCS, London, England

The histological responses to one variety of diodontic (endodontic endosseous) implant through the upper central incisors of Macaca irus monkeys will be reported. The ratio of the intraosseous portion of the implant to the tooth length was varied. The histologic technique was also altered to give a better understanding of the tissue response. A comparison is drawn between the experimental results and clinical material which has failed.

- 3:30 Stress in endodontics  
DONALD RAY MORSE, DDS, MA, Philadelphia, PA

Stress is defined followed by an examination of specific stressors of endodontic practice. A recent study on stress, relaxation and salivary changes is discussed. Methods of counteracting endodontic stress and a holistic approach to the management of stress is considered.

- 4:00 Clinical and biologic evaluation of hydron  
KAARE LANGELAND, DDS, PhD, Farmington, CT

Hydron, a hydrophilic gel, was tested for its clinical and biological properties in subcutaneous implants in rats, in bone implants in guinea pigs, and in root canals of subhuman primates. The physical properties, placement and removal of the material and the biologic response to tissue implantation will be revealed.

- 4:30 Cyclic AMP and cyclic GMP quantitation in pulp and periapical lesions and their correlation with pain  
OSCAR R. BOLANOS, DDS, MS, Philadelphia, PA

Pulpal and periapical lesion tissue samples were collected from patients ranging in age from 15-52 years. Nine pulp samples (controls) and nine periapical samples were from asymptomatic patients. Eighteen pulp samples were from symptomatic patients. The concentration of cyclic AMP and cyclic GMP per mg of protein were determined for all samples.

## WRITING FOR THE SCIENTIFIC PRESS

### Room 10

Moderator: DUANE E. COMPTON, DDS, MSD

- 2:00- Clinicians: ROGER H. SCHOLLE, DDS, MS, Chicago  
5:00 PAUL BARTON, MA, Indianapolis  
IRVING J. NAIDORF, DDS, New York

Dr. Scholle is editor of the American Dental Association. Professor Barton holds a joint appointment in Dentistry and Journalism at the Indiana University School of Dentistry where he has taught scientific writing for the past 12 years. A former reporter and editor, he is an editorial consultant to the journals of Prosthetic Dentistry and Periodontology. His honors include the Distinguished Service Award of the American Association of Dental Editors. Dr. Naidorf has served as editor of the Journal of Endodontics since 1979.

Professional journals are an important means of communicating with the dental profession. A practical method of preparing articles for the professional literature will be described. The step-by-step approach will cover the gathering and organization of material, getting started, completing the first draft, and revising and editing. Ways of overcoming "writer's block" and maintaining a positive attitude will be stressed. Elements that predispose the journal editor to accept submitted scientific articles for publication will be explained and JADA policies governing acceptance of commentary, letters to the editor, news reports and editorials will be outlined.



## **ENDODONTIC RESEARCH SYMPOSIUM**

### **Provincial Ballroom**

Moderator: SAMUEL SELTZER, DDS

- 2:00 A study of endodontic treatment of infected root canals in one visit  
DR. HISASHI NAGASAWA\* and DR. H. NAKAMUTA,  
Kyushu University, Fukuoka, Japan
- 2:25 Root canal filling lateral condensation using a thermoplasticized  
gutta percha technique  
THOMAS KING\*, DDS, Indiana University
- 2:50 Study of two techniques of canal obturation and their apical seal  
utilizing a radioisotope  
JAMES BALDI\*, DDS, University of Illinois
- 3:15 The sealing ability of the McSpadden root canal filling technique  
GARY HARRIS\*, DDS, and DAVID DICKEY, DMD,  
Louisiana State University
- 3:40 A three dimensional look at canals filled by the McSpadden  
technique  
MELVIN GOLDMAN\*, DDS, ANTHONY TERRES, DMD, and  
MARTIN GELFAND, DDS, Tufts University
- 4:05 On the development of therapeutic system and canal model for  
canal preparation, etc., based on the rheological analysis of  
warm gutta percha  
KUNIO FUKADA\*, DDS, and MASA HARU KOGA, DDS,  
Fukada Institute, Tokyo, Japan
- 4:30 An analysis of 2,500 endodontically treated teeth  
STUART FERGUSON\*, DDS, Indiana University

\*Clinician

5:00- **MEET THE AMERICAN BOARD OF ENDODONTICS**  
6:00 **Dominion Ballroom D**

5:00- **AADS-ENDODONTIC SECTION MEETING**  
6:00 **Provincial Ballroom**

6:00 **BUSES DEPART FOR FELLOWSHIP RECEPTION AT  
UNIVERSITY MUSEUM**

---

**BADGES MUST BE WORN AT  
ALL OFFICIAL AAE FUNCTIONS**

---

## FRIDAY, A.M., MAY 1

FRIDAY

8:00- **CONTINENTAL BREAKFAST**  
9:00 **Pacific Hall**  
(Admission by ticket only.)

### **SCIENTIFIC SYMPOSIUM** **Dominion Ballroom D**

#### **BEYOND THE ROOT CANAL — THE TOTAL PATIENT**

Moderator: M. LAMAR HICKS, DDS

9:00- Current advances in medicine and their relationship to endodontic  
12:00 practice

LOUIS F. ROSE, DDS, MD, Associate Professor and Chief, Dental Medicine and Surgery Service, Medical College of Pennsylvania, Philadelphia; Associate Professor in Periodontics, University of Pennsylvania School of Dental Medicine and Temple University School of Dentistry; Diplomate, American Board of Periodontology.

BARRY H. HENDLER, DDS, MD, Director, Division of Oral and Maxillofacial Surgery, Dental Medicine and Surgery Service, Medical College of Pennsylvania, Philadelphia; Assistant Professor in Oral Surgery and Anesthesiology, University of Pennsylvania; Diplomate, American Board of Oral and Maxillofacial Surgeons.

The practicing dentist will be familiarized with the ever increasing numbers of patients who represent an increased risk during dental therapy. A method of evaluating medical problems which might adversely affect dental treatment will be given along with suggestions which will guide the practitioner into pathways of care to avoid catastrophe.

The presentation is structured as an analogue to the dentist's encounter with a new patient. Physical evaluation and advances in medicine that affect the medical/dental interface will be discussed. Emphasis will be placed on the role of the dentist in the treatment of the patient with hypertension, coronary artery disease, cardio-vascular lesions requiring SBE prophylaxis, diabetes, and hepatitis.

### **ENDODONTIC RESEARCH SYMPOSIUM** **Provincial Ballroom**

Moderator: MELVIN GOLDMAN, DDS

- 9:00 A promising method for fixing human pulp  
MICHAEL GAYNOR\*, DDS, University of Illinois
- 9:25 Volumetric measurements of apical leakage and their relationship to traditional linear measurements  
KENNETH ZAKARIASEN\*, DDS, MS, PhD, University of Iowa, and WILLIAM DOUGLAS, MS, PhD, BDS, University of Minnesota
- 9:50 A double blind study of preoperative use of a nonsteroidal anti-inflammatory agent on post-operative endodontic pain  
WILLIAM TOLSON\*, DDS, and MELVIN GOLDMAN, DDS, Tufts University

- 10:15 Effectiveness of preoperative treatment with ibuprofen (Motrin) for post-operative endodontic pain  
GEORGE E. SAS\*, DDS, SAMUEL SELTZER, DDS, MARVIN GROSS, DDS, and IRVING SINAI, DDS, Temple University
- 10:40 The anti-microbial action of calcium hydroxide preparations on the endodontic aerobic flora  
LEON LEMIAN\*, DDS, MScD, GILLES COTE, DDS, and MONIQUE MICHAUD, DDS, MSD, University of Montreal, Canada
- 11:05 The dynamics of microcirculation in the dental pulp: an in-vivo video microscopic approach  
SYNGCUK KIM\*, DDS, Columbia University

\*Clinician

### ENDODONTIC ROUNDTABLE SEMINARS

(Admission by pre-registered ticket only.)

Chairman: MANUEL I. WEISMAN, DDS

Co-chairman: PAUL M. VANEK, DDS

- 8:00-10:00 **ERS 1 — Seminar Room A**  
The expanded role of calcium hydroxide in endodontic therapy  
RAYMOND T. WEBBER, DDS, MS, Gainesville, FL

**ERS 2 — Seminar Room B**  
Preventive-interceptive endodontic treatment.  
MARTIN WEISELBERG, DDS, Fort Lee, NJ

**ERS 3 — Seminar Room C**  
Endodontics and the medically compromised patient  
LEO BOTWINICK, DDS, MA, New York, NY

**ERS 4 — Seminar Room D**  
Bleaching vital and non-vital teeth  
DONALD E. ARENS, DDS, MSD, Indianapolis, IN

**ERS 5 — Room 2**  
The slide seminar: how to prepare, photograph, and present quality educational programs  
ALBERT C. GOERIG, DDS, MS, Vine Grove, KY

**ERS 6 — Room 3**  
Let's talk about endodontic failures  
M. CAMERON CRUMP, DDS, Phoenix, AZ

**ERS 7 — Room 4**  
Endodontic emergency treatment  
JERRY F. TAINTOR, DDS, MS, Los Angeles, CA

**ERS 8 — Room 5**  
Endodontic surgery for posterior and involved teeth  
ADOLPH BUSHELL, DDS, Hartford, CT

**ERS 9 — Room 9**  
Compacted gutta percha  
JOHN T. McSPADDEN, DDS, Johnson City, TN

**ERS 10 — Room 10**  
Pulpal responses: "the clinical connection"  
HAROLD R. STANLEY, DDS, MS, Gainesville, FL



**FRIDAY**

10:00-  
12:00

**ERS 11 — Seminar Room A**

It's difficult to treat what you cannot find, or locating and instrumenting fine canals  
PIERRE R. DOW, DDS, MSC, Vancouver, Canada

**ERS 12 — Seminar Room B**

Artificial dentin for pulpless teeth  
WILLIAM E. HARRIS, DDS, Atlanta, GA

**ERS 13 — Seminar Room C**

Endodontics for little folks  
JOE H. CAMP, DDS, MSD, Charlotte, NC

**ERS 14 — Seminar Room D**

Endodontic practice for the 80's  
GERALD C. DIETZ, DDS, MS, Birmingham, MI

**ERS 15 — Room 2**

Aids and pitfalls in endodontic surgery  
HAROLD GERSTEIN, DDS, Milwaukee, WI

**ERS 16 — Room 3**

Endodontic treatment planning  
F. JAMES MARSHALL, DMD, MS, Lake Oswego, OR

**ERS 17 — Room 4**

Current trends in sealing canal systems  
NGUYEN T. NGUYEN, DDS, San Francisco, CA

**ERS 18 — Room 5**

Pain control in endodontics  
IRVING L. FRIED, DDS, MA, New York, NY

**ERS 19 — Room 9**

Aids for a pleasant endodontic experience  
JOHN D. HARTNESS, DDS, Rocky Mount, NC

**ERS 20 — Room 10**

Traumatic injuries to teeth  
ANDREW E. MICHANOWICZ, DDS, Pittsburgh, PA

12 Noon **LUNCH ON YOUR OWN**

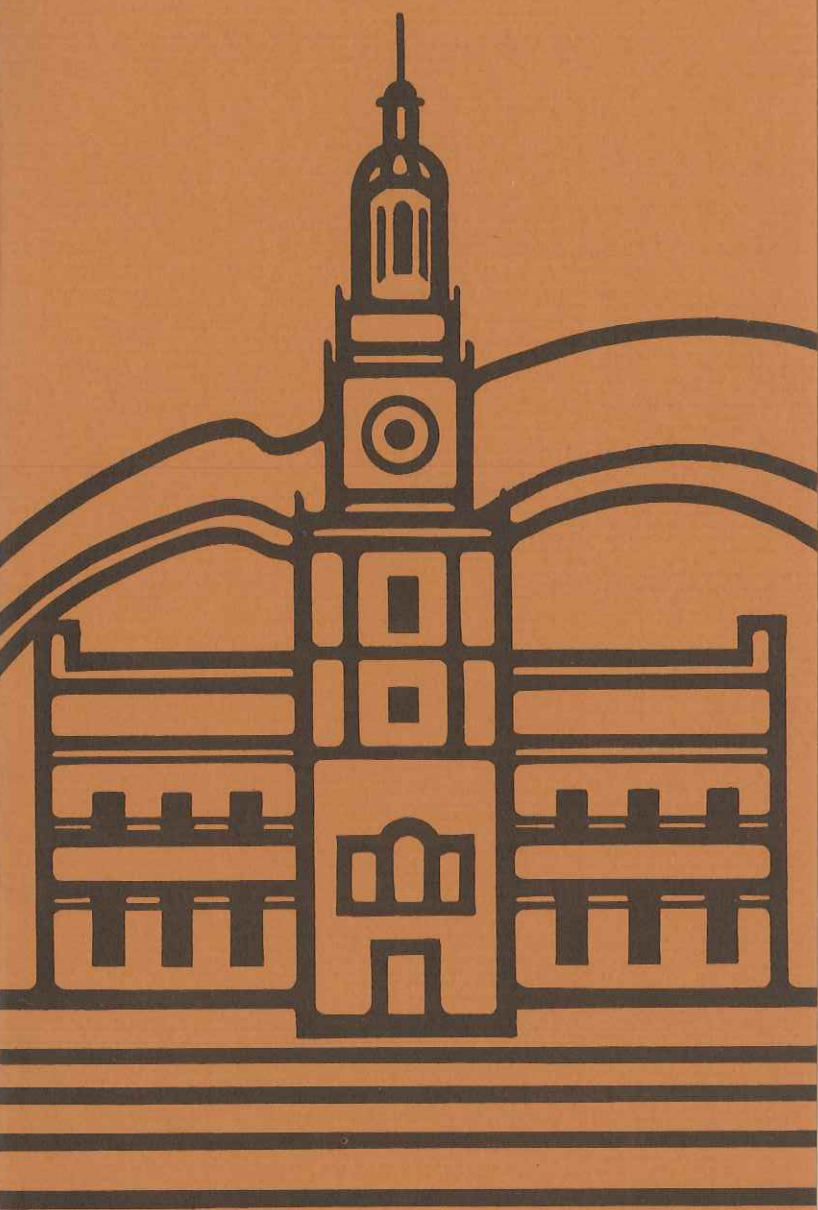
---

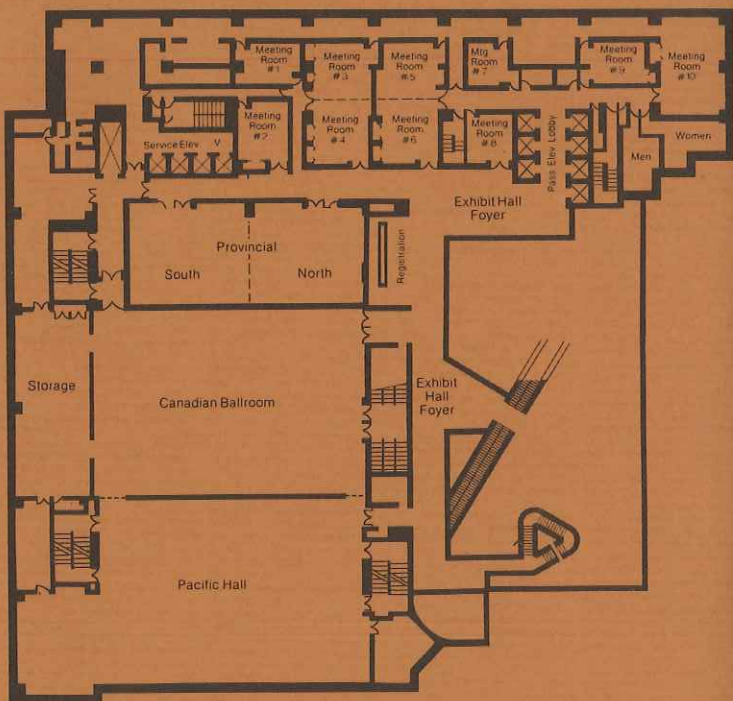
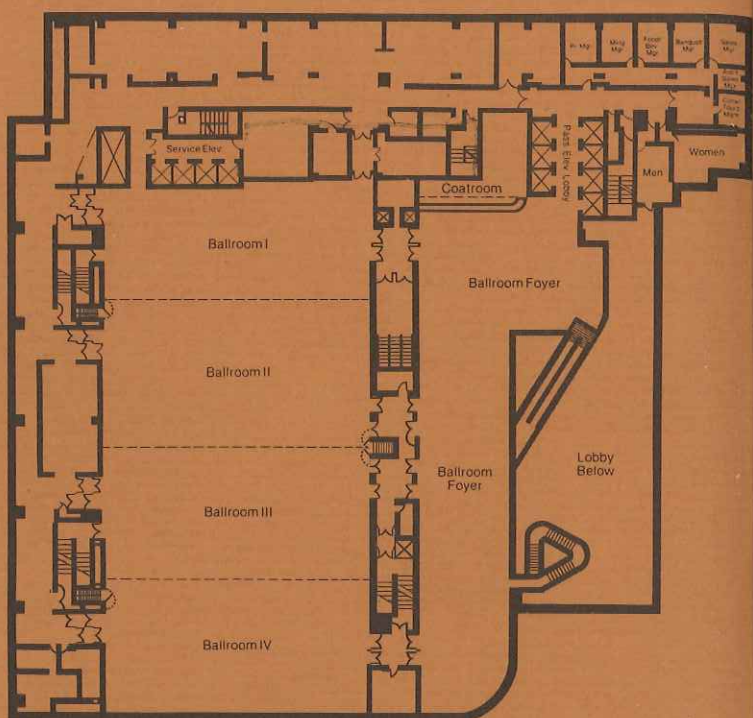
**Saturday, May 2, 1981****8 PM - Dominion Ballroom**

Vouchers must be exchanged for tickets when you select tables for the Dinner Dance. This should be accomplished before 12 Noon on Friday.

# CONDENSED PROGRAM

**38th Annual Session  
American Association of Endodontists  
Franklin Plaza Hotel  
Philadelphia, Pennsylvania  
April 29-May 3, 1981**







# CONDENSED PROGRAM

## MONDAY, APRIL 27

9 am-5 pm ABE Directors' Meeting . . . . . Seminar A

## TUESDAY, APRIL 28

9 am-5 pm ABE oral examinations . . . . . Seminar A & Room 138  
E&M Foundation Trustees' Meeting . . . . . Room 2

## WEDNESDAY, APRIL 29

8 am Buses leave for Golf Event . . . . . Hotel entrance  
9 am-5 pm ABE oral examinations . . . . . Seminar A & Room 138  
AAE Board of Directors Meeting . . . . . Room 2  
Continuing Education Course . . . . . Dominion "D"  
11 am Buses leave for tennis tournament . . . . . Hotel entrance  
6:30 pm Early Arrival Party . . . . . Dominion Foyer

## THURSDAY, APRIL 30

6 am Buses leave for 6K run . . . . . Hotel entrance  
7:30 am Continental breakfast . . . . . Dominion "A"  
8:30 am Opening Session . . . . . Dominion "D"  
9 am-12N Scientific Symposium . . . . . Dominion "D"  
Clinical Essays . . . . . Dominion "C"  
Spokesmen's Training . . . . . Room 10  
12 Noon Luncheon . . . . . Dominion "A & B"  
2 pm-5 pm Scientific Symposium . . . . . Dominion "D"  
Clinical Essays . . . . . Dominion "C"  
Writing for Scientific Press . . . . . Room 10  
Research Symposium . . . . . Provincial  
5 pm-6 pm Meet the ABE . . . . . Dominion "D"  
AADS Endodontic Section Meeting . . . . . Provincial  
6 pm Buses leave for FELLOWSHIP RECEPTION . . . . . Hotel entrance

## FRIDAY, MAY 1

7:30-9 am New member/graduate student breakfast . . . . . Dominion "B"  
ABE Past directors' breakfast . . . . . Room 1  
8 am-9 am Continental breakfast . . . . . Pacific Hall  
8 am-12N Endodontic Roundtable Seminars . . . . . (See page 00)  
9 am-12N Scientific Symposium . . . . . Dominion "D"  
Research Symposium . . . . . Provincial  
12 Noon Committee meetings . . . . . (See page 00)  
2 pm-5 pm Scientific Symposium . . . . . Dominion "D"  
Clinical Essays . . . . . Dominion "C"  
5:30 pm Buses leave for Atlantic City . . . . . Hotel entrance

## SATURDAY, MAY 2

7:30 am AAE Past presidents' breakfast . . . . . Dr. Osetek's Suite  
8 am-12N Endodontic Roundtable Seminars . . . . . (See page 00)  
8 am-9 am Continental breakfast . . . . . Pacific Hall  
9 am-12N Research Symposium . . . . . Provincial  
Table Clinics . . . . . Canadian Ballroom  
12 Noon Coolidge Memorial Luncheon . . . . . Dominion Ballroom  
2 pm-4 pm General Assembly Meeting . . . . . Provincial  
7 pm Past Presidents' reception . . . . . Dominion Foyer  
8 pm-1am Dinner Dance . . . . . Dominion Ballroom

## SUNDAY, MAY 3

8:00 am AAE Board of Directors' Meeting . . . . . Room 9  
8 am-12N ABE Directors' Meeting . . . . . Room 2  
9 am-12N Louis I. Grossman Endodontic Study Club . . . . . Dominion "A"

## SPOUSE/SOCIAL ACTIVITIES

### WEDNESDAY, APRIL 29

8 am	Buses leave for golf event	*
11 am	Tennis tournament	*
6:30 pm	Early Arrival Party	Dominion Ballroom Foyer

### THURSDAY, APRIL 30

6 am	Buses leave for 2nd Annual AAE 6K Run	
8 am	Continental breakfast	Dominion Ballroom A
8:45 am-4 pm	Brandywine River Museum/Longwood Gardens Tour	*
9:45 am-4 pm	Philadelphia Museum of Art Tour	*
12 Noon	Luncheon featuring Judge Lynne Abraham & Frank Ford	Dominion Ballroom A-B
6 pm	Buses leave for FELLOWSHIP RECEPTION at Univ. Museum	

### FRIDAY, MAY 1

9:30 am-	AAE Women's Auxiliary Brunch/Business Session	
12 Noon	Barbara Oak Silver, speaker (Getting Yours: Law, Finance and Women)	Dominion Ballroom C
1:30 pm-4 pm	Tour of Historic Philadelphia	*
5:30 pm-Midnight	Atlantic City Casino Jaunt	*

### SATURDAY, MAY 2

9 am-	Children's Tour of Philadelphia	*
12 Noon		
10:30 am-	Continental Breakfast/Wives' Workshop	
12 Noon	Tamara Seldin, speaker	Dominion Ballroom D
12 Noon	Coolidge Memorial Luncheon featuring "Philadelphia Boys Choir"	Dominion Ballroom A-C
7:00 pm	Past Presidents' Reception	Dominion Ballroom Foyer
8:00 pm	Dinner Dance	Dominion Ballroom A-D

\*Buses leave from Franklin Plaza Hotel.

---

**WOMEN'S AUXILIARY HOSPITALITY**  
**PARLOR D — ROOM 228**  
**SECOND FLOOR, TOWER SECTION**

---

## FRIDAY, P.M., MAY 1

### SCIENTIFIC SYMPOSIUM Dominion Ballroom D

#### BEYOND THE ROOT CANAL — THE TOTAL PATIENT

Moderator: HARRY BLECHMAN, DDS

2:00- The philosophy and selection of antibiotics based on cell anatomy,  
4:00 physiology, target areas and effectiveness as it applies to endo-  
dontics

JACOB GOLDSTEIN, DDS, PhD, Associate Professor, Department of Endodontics, New York University Dental School, New York City; Formerly Associate Professor, Department of Endodontics and Department of Oral Biology-Microbiology, Medical College of Georgia, School of Dentistry.

Antibiotic therapy is a part of the regimen used by the endodontist in the treatment of a periapical infection. These drugs function in a dynamic environment created by interactions of the host and the microbe. The clinical effectiveness of an antibiotic depends upon an understanding of factors that prevail in the disease region and the innate capacitance of the microbes to resist the drug's activity. Failure to recognize such aspects of antibiotic therapy can lead to unwarranted use of these drugs and persistence of infection. The rationale in choosing an antibiotic or an alternative antibiotic as it applies to endodontic treatment is discussed. The consequences of shotgun antibiotic therapy to the microbe and the patient are also clearly indicated.

FRIDAY



## CLINICAL ESSAYS

### Dominion Ballroom C

Chairman: RICHARD E. WALTON, DMD, MS  
 Moderator: WILLIAM E. BERNIER, DDS, MA

- 2:00 Evaluation of root canal therapies performed by other operators and their results  
 YURY KUTTLER, DDS, MD, Mexico City, Mexico  
 GUILLERMO S. JIMINEZ, DDS, Vera Cruz, Mexico

An analysis of a random 358 roentgenograms of 157 canalotherapies performed by other operators differs greatly with the high percentages of success reported of one's own root canal therapies. With techniques and materials generally used, 14% success and 86% failure was found. The causes of this high failure rate will be highlighted.

- 2:30 Preservation of alveolar ridge by root submergence  
 PHILIP DELIVANIS, DDS, MS, Louisville, KY

This essay will discuss the patterns of alveolar bone formation and resorption, the effect of tooth eruption on the alveolar ridge and the techniques that have been developed to prevent continuous tooth eruption. The advantages and disadvantages of complete versus incomplete root submergence will be detailed.

- 3:00 Canal orifice preparation as it relates to access to the apex  
 I. JOEL LEEB, DDS, MSD, PhD, Chapel Hill, NC

This study employed extracted molar teeth to examine the relationship between canal access and instrumentation of the apical region. Two series of experiments were conducted with untouched orifices and flared orifices to compare the efficiency of canal preparation in the apical root canal.

- 3:30 Are prophylactic antibiotics useful to reduce surgical morbidity?  
 LARRY J. PETERSON, DDS, MS, Farmington, CT

Guidelines will be presented that will identify those patients who will benefit from antibiotic prophylaxis and outline the most effective prophylactic regimen for the prevention of wound infection.

- 4:00 Local anesthetic techniques used to obtain profound pulpal anesthesia for mandibular teeth  
 GWENET LORNA LAMBERT, BDS, Los Angeles, CA

Difficulties associated with obtaining profound pulpal anesthesia of mandibular teeth are well known to dentists and patients. Local anesthetic techniques with advantages and disadvantages will be outlined. The Gow Gates mandibular block injection, the periodontal ligament injection and the intraosseous injection will be included.

- 4:30 Clinical photography for the endodontist  
 ALBERT C. GOERIG, DDS, MS, Fort Knox, KY

Popular clinical camera set-ups and accessories, intra- and extra-oral slide composition, and exposure factors make up this discussion. Simplified techniques of copying slides, radiographs and graphics will be demonstrated.

- 5:30 **BUSES DEPART FOR CASINO JAUNT, ATLANTIC CITY**

## SATURDAY, A.M., MAY 2

SATURDAY

8:00-  
9:00 **CONTINENTAL BREAKFAST**  
**Pacific Hall**  
(Admission by ticket only.)

**ENDODONTIC ROUNDTABLE SEMINARS**  
(Admission by pre-registered ticket only.)

Chairman: MANUEL I. WEISMAN, DDS, Augusta, GA  
Co-chairman: PAUL M. VANEK, DDS, Ann Arbor, MI

8:00-  
10:00 **ERS 1 — Seminar Room A**  
The expanded role of calcium hydroxide in endodontic therapy  
RAYMOND T. WEBBER, DDS, MS, Gainesville, FL

**ERS 2 — Seminar Room B**  
Preventive-interceptive endodontic treatment  
MARTIN WEISELBERG, DDS, Fort Lee, NJ

**ERS 3 — Seminar Room C**  
Endodontics and the medically compromised patient  
LEO BOTWINICK, DDS, MA, New York, NY

**ERS 4 — Seminar Room D**  
Bleaching vital and non-vital teeth  
DONALD E. ARENS, DDS, MSD, Indianapolis, IN

**ERS 5 — Room 2**  
The slide seminar: how to prepare, photograph, and present  
quality educational programs  
ALBERT C. GOERIG, DDS, MS, Vine Grove, KY

**ERS 6 — Room 3**  
Let's talk about endodontic failures  
M. CAMERON CRUMP, DDS, Phoenix, AZ

**ERS 7 — Room 4**  
Endodontic emergency treatment  
JERRY F. TAINTOR, DDS, MS, Los Angeles, CA

**ERS 8 — Room 5**  
Endodontic surgery for posterior and involved teeth  
ADOLPH BUSHHELL, DDS, Hartford, CT

**ERS 9 — Room 9**  
Compacted gutta percha  
JOHN T. McSPADDEN, DDS, Johnson City, TN

**ERS 10 — Room 10**  
Pulpal responses: "the clinical connection"  
HAROLD R. STANLEY, DDS, MS, Gainesville, FL

10:00-  
12:00

**ERS 11 — Seminar Room A**

It's difficult to treat what you cannot find, or locating and instrumenting fine canals  
PIERRE R. DOW, DDS, MSC, Vancouver, Canada

**ERS 12 — Seminar Room B**

Artificial dentin for pulpless teeth  
WILLIAM E. HARRIS, DDS, Atlanta, GA

**ERS 13 — Seminar Room C**

Endodontics for little folks  
JOE H. CAMP, DDS, MSD, Charlotte, NC

**ERS 14 — Seminar Room D**

Endodontic practice for the 80's  
GERALD C. DIETZ, DDS, MS, Birmingham, MI

**ERS 15 — Room 2**

Aids and pitfalls in endodontic surgery  
HAROLD GERSTEIN, DDS, Milwaukee, WI

**ERS 16 — Room 3**

Endodontic treatment planning  
F. JAMES MARSHALL, DMD, MS, Lake Oswego, OR

**ERS 17 — Room 4**

Current trends in sealing canal systems  
NGUYEN T. NGUYEN, DDS, San Francisco, CA

**ERS 18 — Room 5**

Pain control in endodontics  
IRVING L. FRIED, DDS, MA, New York, NY

**ERS 19 — Room 9**

Aids for a pleasant endodontic experience  
JOHN D. HARTNESS, DDS, Rocky Mount, NC

**ERS 20 — Room 10**

Traumatic injuries to teeth  
ANDREW E. MICHANOWICZ, DDS, Pittsburgh, PA



**ENDODONTIC RESEARCH SYMPOSIUM —  
GRADUATE STUDENT SECTION  
Provincial Ballroom**

Moderator: JAMES SIMON, DDS

- 9:00 Preparation of finely curved mandibular canals  
JOHN HUNTER\*, DDS, MS, University of Michigan
- 9:25 A comparison of antimicrobial effects of chlorhexidine gluconate versus sodium hypochlorite as irrigants in endodontic therapy  
MICHAEL RINGEL\*, DDS, Indiana University
- 9:50 Radiopharmaceutical uptake in lesions of endodontic origin in rats: a longitudinal study  
KENNETH SEROTA\*, DDS, and MARJORIE JEFFCOAT, DMD, Harvard University, Forsyth Dental Center
- 10:15 Alteration of human pain thresholds by nutritional manipulation and L-Tryptophan supplementation  
SAMUEL SELTZER\*, DDS; RUSSELL STOCH, BDS, DDS, RICHARD MARCUS, DDS, and ERIC JACKSON, DDS, Temple University
- 10:40 A scanning electron microscopic comparison of several endodontic irrigating solutions  
RUSSELL YAMADA\*, DMD, and ANNABELLE ARMAS, DDS, Tufts University
- 11:05 A comparison of the effects of gutta percha removal by rotary instruments and softening agents on the apical seal during post preparation - an autoradiographic study  
DAVID DICKEY\*, DMD, and GARY HARRIS, DDS, Louisiana State University
- 11:30 Comparison of gutta percha filling techniques  
MARSTON WONG, DDS, MS, US Army, Madigan Army Medical Center

\*Clinician

**TABLE CLINICS (9:00-12:00 Noon)**  
**Canadian Ballroom**

Chairman: W. CRAIG BELL, DDS

**GRADUATE STUDENT SECTION**

1. Pathological conditions that may mimic periapical lesions  
 RICHARD A. BEAVERS, University of Michigan
2. Biocompatibility of a new root canal filling material (bone cement) in periapical tissues of the rat  
 JEFFREY W. LINDEN, Forsyth Dental Center
3. A microstructural analysis of the twisted endodontic instrument  
 LISA GERMAIN, Boston University
4. Microleakage in hydron and gutta percha  
 AHMED MASSOUD, University of Iowa
5. An anlaysis of apical microleakage in teeth prepared for posts  
 SANDRA MADISON, University of Iowa
6. RC2B paste and the Sargenti technique: a linear and volumetric microleakage analysis  
 RICHARD BEATTY, University of Iowa
7. Use of analgesics in endodontics  
 WILLIAM J. GIRSCH and JERALD W. SMITH, University of North Carolina
8. Endodontics terminology: its use and abuse  
 JOHN F. HEATON and STEVE WARREN, University of Maryland
9. A technique for staining extracted teeth: a research and teaching aid for bleaching  
 WILLIAM F. FRECCIA, Walter Reed Army Medical Center
10. Success or failure? What's your opinion?  
 MARTIN GELFAND and ERIC SUNDERMAN, Tufts University
11. Small endodontic instrument sterilization through antibiotic bottles  
 JESUS RICARDO MONTES de OCA PEDROSA, National University of Mexico
12. Acute exacerbations following initial treatment of necrotic pulp  
 FRANK S. BALABAN, West Virginia University
13. Eye injuries in the dental office — prevention and treatment  
 FRANK S. LUXL and JOANNE S. KLOPPER, OD, Wilmington, DE
14. Esthetic retrofilling  
 VAN T. HIMEL, Louisiana State University

## NONGRADUATE SECTION

15. Coronal build-up of the degraded tooth before and after endodontic therapy  
HENRY KAHN, Palm springs, CA
16. Extrusion of endodontically treated teeth  
DAVID L. KELLER and ELIAS DROBOTIJ, Fayetteville, NC
17. Post positions that win  
ROBERT V. WEISSMAN, Fairlawn, NJ
18. The utilization of a #10 file during lateral condensation of gutta percha  
HOWARD H. POMERANZ, Millburn, NJ
19. Restoration of the endodontically treated tooth  
BEN J. FISHER, Indianapolis, IN
20. The use of cadaver sections in the demonstration of spatial relationship of root canal anatomy  
SAMUEL S PATTERSON and CARL W. NEWTON, Indiana University
21. Creative cast cores and posts  
LAWRENCE I. SHEPARD, Fairlawn, NJ
22. Fabricate your own chairside helper  
JEROME C. DONNELLY, Fort Meade, MD
23. Apical leakage associated with automated thermatic condensation of gutta percha: a linear and spectrophotometrically determined volumetric analysis  
BRIAN SECRIST, University of Iowa
24. Are all periapical radiolucencies due to pulpless teeth?  
NORBERT HERTL, Baltimore, MD
25. Decompression of large cystic periapical lesions  
ELMER J. NEAVERTH and HANS A. BURG, Fort Gordon, GA
26. Esthetic and practical restorations for anterior teeth during endodontic treatment  
SAMI SAMANI, Lyndhurst, NJ
27. A new device for removing posts and fractured endodontic instruments  
JOHN B. MESSER, Victoria, Australia



## **SATURDAY, P.M., MAY 2**

### **SATURDAY**

- 12 Noon **COOLIDGE MEMORIAL LUNCHEON**  
Dominion Ballroom
- 2:00-4:00 **GENERAL ASSEMBLY MEETING**  
Provincial Room
- 7:00 **PAST PRESIDENTS' RECEPTION**  
Dominion Foyer
- 8:00 **DINNER DANCE**  
Dominion Ballroom

---

### **SATURDAY COOLIDGE MEMORIAL LUNCHEON**

**(AAE members and Auxiliary members)**  
**12 Noon - Dominion A, B, C**

Entertainment will be provided by the  
Philadelphia Boys' Choir.

---

## SUNDAY, A.M., MAY 3

### LOUIS I. GROSSMAN ENDODONTIC STUDY CLUB

(Continental Breakfast Symposium)

**Dominion Ballroom A**

9:00-  
12:00

### ENDODONTIC FLARE-UPS: CAUSE AND CORRECTIONS

Moderator: SEYMOUR OLIET, DDS, Philadelphia

Flare-ups with intentional reimplantations  
LOUIS I. GROSSMAN, DDS, Philadelphia

Flare-ups associated with vertical root fractures  
GEORGE G. STEWART, DDS, Philadelphia

Surgical correction  
SAMUEL R. ROSSMAN, DDS, Philadelphia

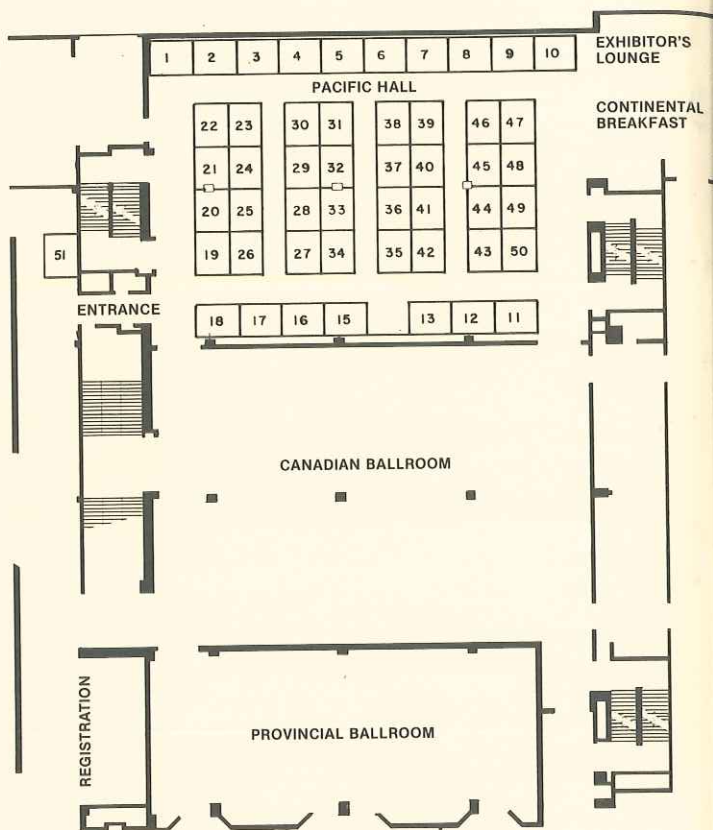
Treatment of emergencies  
LEIF TRONSTAD, DMD, PhD, Philadelphia

Clinical flare-ups  
LEONARD N. PARRIS, DDS, Philadelphia

Overview — A variety of theories  
SAMUEL SELTZER, DDS, Philadelphia

SUNDAY

# 1981 EXHIBITORS



## EXHIBIT HOURS

Thursday, April 30 ..... 9:00 am - 6:00 pm  
 Friday, May 1 ..... 8:00 am - 5:00 pm  
 Saturday, May 2 ..... 8:00 am - 3:00 pm

Eastern Audio Cassettes (Booth #6)

AAE Endowment & Memorial Foundation (Booth #7)

AAE Public Affairs Committee (Booth #8)

AAE Career Counseling Committee (Booth #9)



## EXHIBITOR

Ada Products, Inc. (Booth #49)  
P.O. Box 17509  
Milwaukee, WI 53217

Amadent/American Medical (Booth #26)  
& Dental Corp.  
P.O. Box 3422  
Cherry Hill, NJ 08034

Analytic Technology Corp. (Booth #12)  
3301 181st Place, N.E.  
Redmond, WA 98052

Columbus Dental (Booth #34)  
634 Wager St.  
Columbus, OH 43206

Dermac Manufacturing, Inc. (Booth #33)  
2845 Dallas Highway  
Salem, OR 97304

Ellman International Mfg. Co. (Booth #5)  
1135 Railroad Ave.  
Hewlett, NY 11557

Encyclopaedia Britannica (Booth #15)  
425 North Michigan  
Chicago, IL 60611

Healthco, Inc. (Booth #41)  
25 Stuart Street  
Boston, MA 02116

Hu-Friedy Mfg. Co., Inc. (Booth #11)  
3118 N. Rockwell St.  
Chicago, IL 60618

Hygenic Corp., The (Booths #21-22)  
1245 Home Avenue  
Akron, OH 44310

Inter-Dent (Booth #31)  
391 Steelcase Rd. #16  
Markham, Ontario L3R 3V9

Ives Laboratories, Inc. (Booth #44)  
685 Third Avenue  
New York, NY 10017

Kerr Co./Sybron (Booth #25)  
28200 Wick Road  
Romulus, MI 48174

Kilgore International (Booth #19)  
36 W. Pearl Street  
Coldwater, MI 49036

Knoll Pharmaceutical Co. (Booth #47)  
30 No. Jefferson Rd.  
Whippany, NJ 07981

Lea & Febiger (Booth #39)  
600 S. Washington Square  
Philadelphia, PA 19106

Lee Pharmaceuticals (Booth #32)  
1444 Santa Anita Avenue  
South El Monte, CA 91733

Libin and Associates (Booth #4)  
907 Hollywood Way  
Burbank, CA 91505

Lincoln Dental & Medical Supply (Booth #45)  
1317-21 W. Nedro Avenue  
Philadelphia, PA 19066

Mardan Business Systems, Inc. (Booth #46)  
6824 Washington Ave.  
Eden Prairie, MN 55344

Medidental Dental Supply Corp. (Booth #23)  
39-23 62nd Street  
Woodside, NY 11377

Microcopy (Booth #42)  
1174 Tourmaline Dr.  
Newbury Park, CA 91320

The C.V. Mosby Company (Booth #48)  
11830 Westline Industrial Dr.  
St. Louis, MO 63141

Mynol, Inc. (Booth #35)  
600 Parkway  
Broomall, PA 19008

NPD Dental Systems (Booth #2)  
5 Jules Lane  
New Brunswick, NJ 08902

Patterson Dental Co. (Booth #3)  
1100 E. 80th Street  
Minneapolis, MN 55420

Premier Dental Products Co. (Booth #43)  
1710 Romano Drive  
Norristown, PA 19401

Pulpdent Corp. of America (Booth #40)  
75 Boylston Street  
Brookline, MA 02147

Quality Aspirators (Booth #28)  
1002 Dove Creek  
Duncanville, TX 75116

Ransom & Randolph Co. (Booth #50)  
324 Chestnut St.  
Toledo, OH 43604

Sandoz Pharmaceuticals (Booth #24)  
Ridgedale Avenue  
East Hanover, NJ 07936

Charles B. Schwed Co., Inc. (Booth #1)  
138 Audley Street  
Kew Gardens, NY 11418

Southeastern Omni (Booth #20)  
118 W. Popular  
Griffin, GA 30224

Star Dental/A Syntex Dental Co. (Booth #13)  
P.O. Box 896  
Valley Forge, PA 19482

Sultan Chemists Inc. (Booth #27)  
85 W. Forest Ave.  
Englewood, NJ 07631

Treloar & Heisel, Inc. (Booth #51)  
P.O. Box 1425  
New Castle, PA 16103

Union Broach Corp. (Booth #29-30)  
36-40 37th Street  
Long Island City, NY 11101

Unitek Corp. (Booth #16-17-18)  
2724 So. Peck Road  
Monrovia, CA 91016

Whaledent International (Booth #36)  
236 Fifth Avenue  
New York, NY 10001

Xerox Medical Systems (Booth #37-38)  
P.O. Box 5786  
Pasadena, CA 91107



## PARTICIPANT'S INDEX

- A** Antrim, Donald D., p. 10  
Arens, Donald E., pp. 15, 19  
Armas, Annabelle, p. 21
- B** Bakland, Leif K., p. 11  
Balaban, Frank S., p. 22  
Baldi, James, p. 13  
Barton, Paul, p. 12  
Beatty, Richard, p. 22  
Beavers, Richard A., p. 22  
Bell, W. Graig, p. 22  
Bellizzi, Ralph, p. 9  
Bernier, William E., p. 18  
Blechman, Harry, p. 17  
Bolanos, Oscar R., p. 12  
Botwinick, Leo, pp. 15, 19  
Burg, Hans A., p. 23  
Bushell, Adolph, pp. 15, 19
- C** Camp, Joe H., pp. 16, 20  
Chamberlin, John H., p. 9  
Compton, Duane E., pp. 9, 12  
Cote, Gilles, p. 15  
Crymp, M. Cameron, pp. 15, 19  
Cunningham, Walter T., p. 11
- D** Delivanis, Philip, p. 18  
Dickey, David J. pp. 13, 21  
Dietz, Gerald C., p. 16, 20  
Donnelly, Jerome C., p. 23  
Douglas, William, p. 14  
Dow, Pierre R., pp. 16, 20  
Drobotij, Elias, p. 23
- F** Ferguson, Stuart, p. 13  
Fisher, Ben J., p. 23  
Freccia, William F., p. 22  
Fried, Irving L., pp. 16, 20  
Fukada, Kunio, p. 13
- G** Gaynor, Michael, p. 14  
Gelfand, Martin, pp. 13, 22  
Germain, Lisa, p. 22  
Gerstein, Harold, pp. 16, 20  
Girsch, William J., p. 22  
Goerig, Albert C., pp. 15, 18, 19  
Goldman, Melvin, pp. 13, 14  
Goldstein, Jacob, p. 17  
Griffiths, Robert H., p. 8  
Gross, Marvin A., p. 15  
Grossman, Louis I., p. 25
- H** Harris, Gary, pp. 13, 21  
Harris, William E., pp. 16, 20  
Hartness, John D., pp. 16, 20  
Hasselgren, Gunnar, p. 9  
Heaton, John F., p. 22  
Hendler, Barry H., p. 14  
Hertl, Norbert, p. 23  
Heuer, Michael A., p. 11  
Hicks, M. Lamar, p. 14  
Himel, Van T., p. 22  
Hunter, John, p. 21
- J** Jackson, Eric, p. 21  
Jeffcoat, Marjorie, p. 21  
Jiminez, Guillermo S., p. 18  
Johns, Richard, p. 11
- K** Kahn, Henry, p. 23  
Keller, David L., p. 23  
Kim, Syngcuk, p. 15  
King, Ordie H., p. 8  
King, Thomas, p. 13  
Klopper, Joanne, p. 22  
Koga, Masaharu, p. 13  
Kuttler, Yury, p. 18

- L** Lambert, Gwenet Lorna, p. 18  
 Langeland, Kaare, p. 12  
 Leeb, I. Joel, p. 18  
 Lemian, Leon, p. 15  
 Linden, Jeffrey W., p. 22  
 Luxl, Frank S., p. 22
- M** Madison, Sandra, p. 22  
 Marcus, Richard, p. 21  
 Marshall, F. James, pp. 16, 20  
 Martin, Howard, p. 11  
 Massoud, Ahmed, p. 22  
 McSpadden, John T., pp. 15, 19  
 Messer, John B., p. 23  
 Michanowicz, Andrew E.,  
 pp. 16, 20  
 Michaud, Monique, p. 15  
 Michelich, Robert J., p. 10  
 Montes, Jesus R.  
 de Oca Pedrosa, p. 22  
 Morse, Donald Ray, p. 12
- N** Nagasawa, H., p. 13  
 Naidorf, Irving J., p. 12  
 Nakamuta, H., p. 13  
 Neaverth, Elmer J., p. 23  
 Newton, Carl W., p. 23  
 Nguyen, Nguyen T., pp. 16, 20
- O** Oliet, Seymour, p. 25  
 Osetek, Edward M., p. 8
- P** Parris, Leonard N., p. 25  
 Patterson, Samuel S., p. 23  
 Peterson, Larry J., p. 18  
 Pomeranz, Howard H., p. 23
- R** Rafferty, Barbara, p. 9  
 Regan, John E., p. 9  
 Ringel, Michael, p. 21  
 Rose, Louis F., p. 14  
 Rossman, Samuel R., p. 25
- S** Samani, Sami, p. 23  
 Sas, George, p. 15  
 Scholle, Roger H., p. 12  
 Secrist, Brian, p. 23  
 Seltzer, Samuel, pp. 13, 15, 21, 25  
 Serota, Kenneth, p. 21  
 Shepard, Lawrence, p. 23  
 Simon, James, p. 21  
 Sinai, Irving, p. 15  
 Smith, Jerald W., p. 22  
 Stanley, Harold R., pp. 15, 19  
 Stewart, George G., p. 25  
 Stoch, Russell, p. 21  
 Sunderman, Eric, p. 22
- T** Taintor, Jerry F., pp. 15, 19  
 Tenca, Joseph I., p. 8  
 Terres, Anthony, p. 13  
 Tolson, William, p. 14  
 Tronstad, Leif, pp. 11, 25  
 Tuncay, Orhan C., p. 10
- V** Vanek, Paul M., pp. 15, 19  
 Veis, Arthur, p. 11
- W** Walton, Richard E., pp. 9, 11, 18  
 Warren, Steve, p. 22  
 Webber, Raymond T., pp. 15, 19  
 Weiselberg, Martin, pp. 15, 19  
 Weisman, Manuel I., pp. 15, 19  
 Weissman, Robert V., p. 23  
 Wong, Marston, p. 21
- Y** Yamada, Russell, p. 21
- Z** Zakariasen, Kenneth, p. 14

## AAE COMMITTEE MEETINGS

### Thursday, April 30

7:00 am 1982 Annual Session Committee . . . . . Room 4

### Friday, May 1

12:15 pm Editorial . . . . . Room 5  
 Education . . . . . Room 3  
 Honors and Awards . . . . . Room 1  
 Membership . . . . . Room 6  
 Peer Review . . . . . Room 4

## STUDY CLUBS, ALUMNI and OTHER GROUPS

### Wednesday, April 29

8:00 pm Sam Seltzer Testimonial Dinner  
 (by invitation) . . . . . Dominion Ballroom

### Thursday, April 30

7:30 am Army Endodontic breakfast . . . . . Room 3  
 7:30 am Boston University Endo Alumni Assn. . . . . Room 6  
 5:00 pm Clyde Davis Endodontic Study Club . . . . . Room 10  
 6:30 pm Boston University Endodontic Alumni Assn. cocktail party . . . . .  
 Philadelphia-Sheraton Hotel, Cafe Careme

### Friday, May 1

7:30 am Columbia University Endodontic Alumni Assn. breakfast . . . . . Room 6  
 12 Noon Pennsylvania Academy of Endodontists business meeting . . . . . Room 2  
 6-8 pm Univ. of Pennsylvania Annual Endodontic Alumni reception . . . . .  
 Provincial Ballroom  
 6:30 pm Harvard Forsyth Endodontic Alumni Party . . . . .  
 (cocktails and dinner) . . . . . Bookbinders Seafood House  
 215 S. 15th Street

### Saturday, May 2

7:30 am Navy Endodontic breakfast . . . . . Room 6  
 7:30 am Harry Healey Endodontic Study Club breakfast . . . . . Room 1

## AWARD RECIPIENTS

### EDGAR D. COOLIDGE AWARD

Bertram L. Wolfsohn . . . . . 1974  
 Vincent B. Milas . . . . . 1975  
 Worth B. Gregory . . . . . 1978  
 Jacob B. Freedland . . . . . 1980  
 Alfred L. Frank . . . . . 1981

### LOUIS I. GROSSMAN AWARD

Louis I. Grossman . . . . . 1973  
 Birger Nygarrrd-Ostby . . . . . 1976  
 I. B. Bender . . . . . 1978  
 Samuel Seltzer . . . . . 1980  
 Harold R. Stanley . . . . . 1981



# AMERICAN BOARD OF ENDODONTICS

## 1981

I.B. Bender  
Melvin Goldman  
James H.S. Simon

## 1982

Dudley H. Glick, pres.  
Richard Moodnik  
Joseph I. Tenca

## 1983

Gerald M. Cathey, secy.  
Harold Gerstein  
Raymond G. Luebke

## TRUSTEES, AAE ENDOWMENT AND MEMORIAL FOUNDATION

### 1981

Myron Chubin, vice ch.  
Joseph D. Maggio  
Jesse Mitchell, Jr.  
Walter Soltanoff

### 1982

Maurice J. Friedman  
Leo Grudin, ch.  
Howard Martin  
Manuel I. Weisman

### 1983

E. William Hicks  
W. Paul Radman  
Richard E. Schmidt  
Herbert F. Spasser, secy.

Ex Officio: Michael A. Heuer and Gerald M. Cathey

## PAST PRESIDENTS

W. Clyde Davis*	'43	Glenn R. Brooks	'61
Ralph F. Sommer*	'44	Vincent B. Milas	'62
Robert G. Kesel	'45	James H. Sherard, Jr.	'63
E.G. Van Valey*	'46	J.B. Freedland	'64
Maynard K. Hine	'47	Henry S. Schmidt	'65
Louis I. Grossman	'48	John I. Ingle	'66
Elmer A. Jasper*	'49	Edwin C. Van Valey	'67
Raymond L. Girardot*	'50	Samuel S Patterson	'68
George C. Sharp*	'51	Warren J. Hedman	'69
F.D. Ostrander	'52	John F. Bucher	'70
L.A. Lucas	'53	Dudley H. Glick	'71
N. Weir Burkman*	'54	I.B. Bender	'72
Harry J. Healey*	'55	Charles A. Scott, Jr.	'73
John R. Pear	'56	Alfred L. Frank	'74
George C. Hare	'57	Robert A. Uchin	'75
George C. Stewart	'58	Frank B. Trice	'76
J. Henry Kaiser*	'59	George A. Zurkow	'77
Paul P. Sherwood*	'60	Harry Blechman	'78
		Paul E. Zeigler	'79

\*Deceased

## HONORARY MEMBERS

Mary C. Crowley  
Louis I. Grossman  
Walter Hess\*

Maynard K. Hine  
Oscar Maisto  
Maury Massler  
Harold Stanley

\*Deceased

## **FUTURE MEETINGS**

### **AMERICAN ASSOCIATION OF ENDODONTISTS**

39th Annual Session  
April 21-25, 1982  
Hyatt & Adams Hotel  
Phoenix, Arizona

40th Annual Session  
April 20-24, 1983  
Diplomat Hotel  
Hollywood, Florida

41st Annual Session  
April 25-29, 1984  
Royal York Hotel  
Toronto, Canada

### **AMERICAN DENTAL ASSOCIATION**

122nd Annual Session  
October 25-29, 1981  
Kansas City, Missouri

123rd Annual Session  
November 7-10, 1982  
Las Vegas, Nevada

124th Annual Session  
October 9-12, 1983  
Anaheim, California

125th Annual Session  
October 21-25, 1984  
Atlanta, Georgia



### **AAE CENTRAL OFFICE**

211 E. Chicago Avenue  
Chicago, Illinois 60611  
312/266-7255

Irma S. Kudo, Executive Director