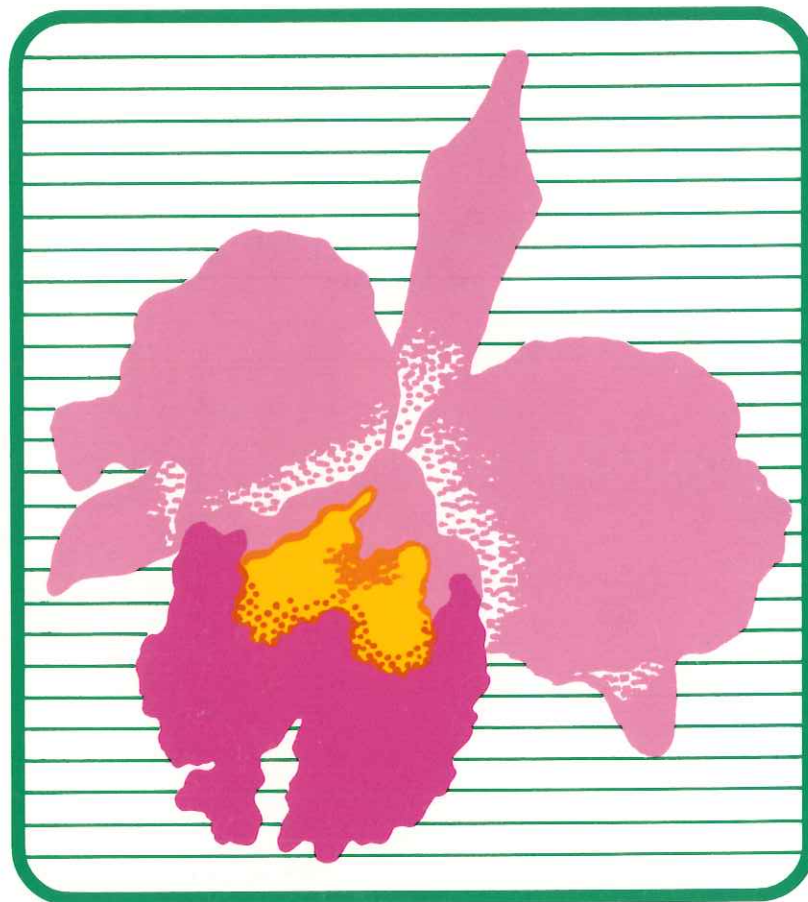
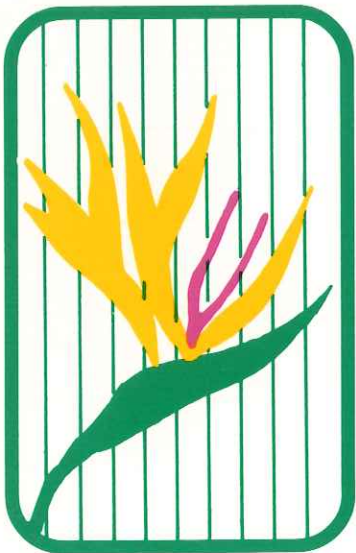


*Preparing for the Future*

AAE



HAWAII



American Association of Endodontists  
57<sup>th</sup> Annual Session

## Table of Contents

AAE Board of Directors .....	2
Annual Session Committee .....	2
General Information .....	3-5
Continuing Education Course .....	6-7
Program	
Wednesday .....	6-7
Thursday .....	8-18
Friday .....	18-32
Saturday .....	32-39
Past Presidents .....	40
Award Recipients .....	41
Board and Committee Meetings .....	42
AAE Alliance .....	42
Meetings: Alumni, Affiliates and others .....	43
Exhibitors .....	44-45
Participants .....	46-47
Floor Plans .....	48-49

The statements and opinions expressed at the AAE Annual Session are solely those of the individual speakers. Their statements and opinions do not reflect any endorsement by the American Association of Endodontists.

### Shuttle Bus Schedule

Shuttle buses will run between the Hilton and the Convention Center according to the following schedule:

**Thursday, March 30**  
 9:30 a.m. - 12 noon  
 4 - 6:30 p.m.  
**Friday, March 31**  
 7 - 10 a.m.  
 3:30 - 5:30 p.m.  
**Saturday, April 1**  
 7 - 10 a.m.  
 1 - 3 p.m.

Departure and arrival at Tapa Tower at the Hilton.



## President's Welcome

Aloha! Welcome to Honolulu. When we rang in the year 2000 a few short months ago, we rang in the future. On this warm and colorful island paradise, we will face together the critical issues emerging in endodontics.

There is something for everyone among the sessions including staff sessions on communication skills and providing better service. The Dental Benefits Committee will present *An endodontist's guide to CDT-3 and SNODENT Codes* and introduce a new publication for endodontists.

For the first time at an AAE Annual Session, the Japan Endodontic Association will provide simultaneous translation into Japanese for several sessions. In addition, members of the organization will present several Limited Attendance Sessions in English. Consult your program for details.

I want to remind you once again about the two-venue setting for this Annual Session. The beautiful Hilton Hawaiian Village is the AAE Headquarters Hotel and site of the Wednesday Continuing Education Course, Board and Committee meetings and the evening social programs. Exhibits and educational sessions are located at the Hawaii Convention Center. The two sites are a short walk apart but, if you prefer to ride, shuttle buses are keeping a schedule between the two locations.

Fred Goodman, General Chair, and the Annual Session Committee including Terryl Propper, Shep Goldstein, Irving Fried, Louis Rossman, Ken Spolnik, Van Himel, Harold Goodis, and Glenn Paulk have developed a forward-looking educational program for endodontist, staff and student. The Local Arrangements Committee with Mike Tajima as Chair have assembled quite a list of tours for those who want to see Hawaii from all perspectives, and a list of their favorite restaurants.

Our wonderful AAE staff deserves our heartfelt thanks. They face many of the same daily challenges we do in keeping up with technology to better support a growing and busy organization. Under the tireless direction of Irma Kudo, executive director, they continue to enthusiastically provide coordination and organization to our Annual Session.

We've come a long way together both figuratively in the advances in our specialty and in the growth of our organization, and quite literally for those of us who have traveled from around the world to be here. Let's make the most of the weather, the program and the camaraderie and have a great meeting.

Harmon R. Katz, D.D.S.  
 President

# AAE Board of Directors



Harmon R. Katz  
President



James L. Gutmann  
President-elect



Jeffrey W. Hutter  
Vice President



Henry J. Van Hassel  
Editor



Samuel O. Dorn  
Secretary



Carl W. Newton  
Immed. Past President



Mahmoud Torabinejad  
Treasurer



Irma S. Kudo  
Executive Director

## District I Directors



Peter A. Morgan  
2002



James O. Roahen  
2000

## District II Directors



Bruce H. Seidberg  
2002



Marc Balson  
2001

## District III Directors



John S. Olmsted  
2000



Lesley A. West  
2001

## District IV Directors



A. Eddy Skidmore  
2000



Michael B. Lindemann  
2001

## District V Directors



William A. Walker, III  
2002



Keith V. Krell  
2001

## District VI Directors



James A. Abbott  
2002



Gary S. Yonemoto  
2000

# Annual Session Committee



Fredric Goodman  
General Chair



Terry A. Propper  
Program Chair



Michael J. Tajima  
Local Committee Chair

## Program

Continuing Education .....	Shepard S. Goldstein
General Interest .....	Irving Fried
Limited Attendance Sessions .....	Louis E. Rossman
Auxiliary (Staff) Sessions .....	Kenneth J. Spolnik
Oral and Poster Research Presentations .....	Van T. Himel
Table Clinics .....	Harold E. Goodis
Exhibits .....	Glenn L. Paulk

## General Arrangements

Assistant Chair .....	Craig S. Haga
Hospitality .....	Wade K. Nobuhara
Hosts .....	Lawrence K. Nitta
Monitors .....	Derrick C. Fu and John M. Kuhara
Signs .....	Jerome K. Yamada and Staphe T. Fujimoto
AAE Alliance .....	Dorothy Nitta

# General Information



The Hilton Hawaiian Village is the Headquarters Hotel for the 57th Annual Session. The Hawaii Convention Center will be used for educational sessions, exhibits and lunches starting at 11 a.m., Thursday, March 30. Shuttle buses will be provided between the Hilton and the Convention Center.

## AAE Headquarters Office

Hilton Hawaiian Village - Nautilus Suite I  
Hawaii Convention Center - Room 319 B

## Attire

Resort wear is appropriate attire for most annual session functions. Resort wear is the classic, colorful Hawaiian print "aloha" shirt combined with slacks or skirts, or a casual dress. It also includes khaki slacks, polo-type shirts, blazers or sweaters for the gentlemen; slacks, skirts, polo-type shirts or blouses, blazers or sweaters and comfortable shoes for the women. Suits, ties, nine-to-five dresses and high heels are not required. Attire for the President's Dinner Dance is resort evening wear which includes casual slacks, aloha or knit shirts (with collar) and optional sports coat for men; casual evening slacks, skirts or dresses for women.

## Badges

Badges must be worn at all official AAE functions.

## CE Certificates

A CE Certificate of Completion and instructions are included in your registration packet. Keep the original AAE CE Certificate of Completion in your file in case of audit or send to your state board if required. The AAE is an ADA CERP recognized provider.



## President's Dinner Dance

Purchase of a voucher does not guarantee seating. To reserve seats for the President's Dinner Dance, exchange your voucher for a banquet ticket at the AAE Dinner Dance Registration Desk at the Hilton before 5 p.m. on Thursday, March 30. If you wish to have group seating, you must present a voucher for each person in your group; all vouchers must be presented at the same time. Each table seats 10 people, and seats are reserved on a first-come, first-served basis. No exceptions will be made. There will be tables reserved for singles (without significant others).

## Registration Hours

(Please note location)

### Hilton Hawaiian Village

Tuesday, March 28 ..... 3 - 8 p.m.  
Wednesday, March 29 ..... 7 a.m. - 8 p.m.  
Thursday, March 30 ..... 7:30 - 9 a.m.

### Hawaii Convention Center

Thursday, March 30 ..... 10 a.m. - 5 p.m.  
Friday, March 31 ..... 7:30 a.m. - 5 p.m.

## Registration Fees

Note that the membership category for dental staff is Auxiliary.\* The Auxiliary Member category is only for dental assistants/office administrators who have submitted a membership application. An endodontist's AAE membership does not include Auxiliary membership for his/her staff. Registration fees and categories include the following:

### AAE professional member (excluding student members)

Beginning Thursday, all sessions and exhibits. One ticket to the following:

Wednesday	Welcome Reception
Thursday	Opening Session Breakfast
Friday	Cont'l Breakfast, Coolidge Luncheon
Saturday	Cont'l Breakfast, Award Luncheon, President's Dinner Dance
Sunday	Farewell Breakfast

### AAE student member

Beginning Thursday, all sessions and exhibits. One ticket to the following: Wednesday Welcome Reception, Thursday Opening Session Breakfast, Friday and Saturday Continental breakfasts and luncheons.

### Nonmember U.S. professional and nonmember student

Beginning Thursday, all sessions and exhibits. One ticket to the Wednesday Welcome Reception.

### Nonmember international professionals and students

Beginning Thursday, all sessions and exhibits. One ticket to the Wednesday Welcome Reception.

### \*Auxiliary member, nonmember dental assistant or nonmember office administrator

Beginning Thursday, all sessions, exhibits. One ticket to the following: Friday and Saturday continental breakfasts and luncheons.

*continued on following page*

# General Information



## Spouse/companion

Beginning Thursday, all sessions and exhibits. One ticket to the Wednesday Welcome Reception. Registration fee includes \$35.00 for AAE Alliance (formerly AAE Auxiliary) membership dues.

## Children

One ticket to the Wednesday Welcome Reception.

## Support the Exhibitors

Please stop by, see the latest products and services, and say thanks to the exhibitors who help defray part of your annual session costs. To allow more time for attendees to visit the exhibit hall, fewer presentations are scheduled on Saturday. Badges must be worn in the exhibit hall. Friday and Saturday continental breakfast and complimentary coffee service will be provided in the exhibit hall.

## Exhibit Hours

Technical Exhibition will be located in Kamehameha Halls II and III at the Hawaii Convention Center.

Thursday, March 30	10:30 a.m. - 6 p.m.
Friday, March 31	7:30 a.m. - 5 p.m.
Saturday, April 1	7:30 a.m. - 1 p.m.

## Hawaii Restaurant Guide

A detailed restaurant guide has been prepared by the Local Arrangements Committee and is enclosed with this packet. Reservations are strongly recommended.

## Web Site Demonstration

Again this year, AAE Online will be demonstrated in the AAE Information Booth. Stop by to see the new features added since last year or watch a full demonstration. Also available is general information about going online and using the Internet.

## Special Assistance

If special assistance, dietary restrictions or other arrangements are required, please see Patt Moskal at the AAE Headquarters Office, in Nautilus Suite I at the Hilton and in room 319B at the Hawaii Convention Center.

## Smoking Policy

For the comfort and health of all attendees, smoking is not permitted at AAE functions or exhibits. This includes all sessions, breakfasts, luncheons, Welcome Reception and the President's Dinner Dance.

## Special Events

### Welcome Reception

**Coral Ballroom - Hilton Hawaiian Village**  
Wednesday, March 29, 6:30 - 8:30 p.m.

Don't miss this opportunity to unwind and mingle with old friends while meeting new colleagues. View the auction items and place your bids early. Light hors d'oeuvres will be served.

### Opening Session Breakfast

**Coral Ballroom - Hilton Hawaiian Village**  
Thursday, March 30, 8 - 10 a.m.

AAE President Harmon R. Katz will give the keynote address.

### Louis I. Grossman Memorial Luncheon

**Kalakaua Ballroom C - Hawaii Convention Center**  
Sponsored by the College of Diplomates  
Thursday, March 30, 12:30 - 1:45 p.m.

Diplomates certified during 1999 will be recognized at this luncheon sponsored by the College of Diplomates. Professor John W. Slocum Jr., Southern Methodist University, Cox School of Business will give the keynote address — Developing High Performance Organizations.

### Edgar D. Coolidge Luncheon

**Kalakaua Ballrooms B and C**  
**Hawaii Convention Center**  
Friday, March 31, 11:30 a.m. - 12:45 p.m.

The program features the presentation of the Edgar D. Coolidge Award.

### Award Luncheon

**Kalakaua Ballrooms B and C**  
**Hawaii Convention Center**  
Saturday, April 1, 12 noon - 1:15 p.m.

The Louis I. Grossman and the Edward M. Osetek Educator Awards will be presented, as well as graduate student awards for oral and poster research presentations and table clinics.

### President's Dinner Dance

**Coral Ballroom - Hilton Hawaiian Village**  
Saturday, April 1, 7:30 p.m. - 12 midnight

Join friends and colleagues for an evening of fine dining and dancing.

### Speaker AV Ready Room

Hilton Hawaiian Village - Nautilus III  
Hawaii Convention Center - Room 322 B

Program presenters are encouraged to review their audiovisual materials in the speaker ready room prior to their presentations to avoid possible equipment problems.

## General Information



### Tape Recording

The Sound of Knowledge will record many of the sessions presented. The audio tapes are available for purchase. Other audio taping is allowed only with the permission of the speaker.

### AAE Career Opportunities Exchange

Registration Area

### Silent Auction

The AAE Alliance will sponsor a silent auction to benefit the AAE Foundation during the Welcome Reception, Wednesday, 6:30 - 8:30 p.m., in the Coral Ballroom at the Hilton.

### Commemorative Tote Bag

You may be one of five lucky winners of free registration for the 2001 Annual Session in New Orleans! You will receive a voucher for a free tote bag commemorating the AAE's 57th Annual Session along with your registration packet. Take your voucher to the AAE Information Center in the Exhibit Hall at the Hawaii Convention Center to receive your complimentary tote bag and to see if you are a winner.

The American Association of Endodontists does not endorse any product or service exhibited at the Annual Session except the following:

#### Discus Dental Software

for Endo-Vision™ practice management software  
*see them in Hawaii at booth 921*

#### Lippincott Williams & Wilkins

publisher of the *Journal of Endodontics*  
*see them in Hawaii at booth 819*

#### MBNA America

issuer of the AAE affinity credit card

#### Treloar & Heisel, Inc.

for AAE-sponsored insurance programs  
*see them in Hawaii in the registration area*

## Future Meeting Dates

**58<sup>th</sup> Annual Session**  
**New Orleans, Louisiana**  
**March 28 - April 1, 2001**

**59<sup>th</sup> Annual Session**  
**Chicago, Illinois**  
**April 10 - 14, 2002**



**Wednesday, March 29**

**General Information**

**Headquarters Hotel**  
Hilton Hawaiian Village

**Exhibits and Sessions**  
Hawaii Convention Center

**Wednesday CEC**  
Hilton Hawaiian Village  
Coral Ballrooms III and IV

**Badges must be worn at all official AAE functions.**

**All evening functions, Board and Committee meetings will be held at the Hilton Hawaiian Village.**

**Continuing Education Course**

**Hilton Hawaiian Village - Coral Ballrooms III and IV - Mid Pacific Conference Center, sixth floor**  
**Moderator: Shepard S. Goldstein, D.M.D.**  
**Framingham, Mass.**

**New concepts in the endodontic-periodontic-prosthodontic relationship**

- Cindy R. Rauschenberger, D.D.S., M.S.**  
Naperville, Ill.
- Louis F. Rose, D.D.S., M.D.**  
Philadelphia
- Louis E. Rossman, D.M.D.**  
Philadelphia
- Arnold S. Weisgold, D.D.S.**  
Philadelphia

Prognosticating the most predictable outcome for "questionable teeth" has become a daily requirement for endodontists. In the past 50 years, many "hopeless" teeth have been restored to function through a combination of endodontic-periodontic-prosthodontic procedures. New combinations of guided tissue regeneration (GTR) procedures and barrier techniques with endodontic surgical procedures have helped optimize the prognosis of many "questionable teeth." Now, there may be a perception in the periodontal community that suggests extraction of questionable teeth and replacement with an osseointegrated titanium implant is a predictable treatment.

As an endodontist, you should know what evidence-based research is available to support the shifts in treatment philosophies with respect to "questionable teeth."

Most importantly, how do we inform patients when to consider endo-perio-pros procedures or extraction with an implant replacement? This course will explore these new concepts in the endodontic-periodontic-prosthodontic relationship. At conclusion, each participant should be able to:

- Know what evidence-based research has been done to support the shifts in treatment philosophies with respect to "questionable teeth."
- Recognize when an implant is more predictable than combined endodontic-periodontic-prosthodontic treatment.
- Understand what periodontal surgical techniques may be incorporated into endodontic surgical techniques to improve success in questionable cases.
- Understand what esthetic outcomes may be expected with both types of treatment.

**Schedule**

7:30 a.m. .... Breakfast\*  
8:15 a.m. .... Introduction  
8:30 a.m. .... Program  
10:15 a.m. .... Break\*  
10:45 a.m. .... Program  
12 noon ..... Lunch\*  
1:00 p.m. .... Program  
2:15 p.m. .... Break\*  
2:45 p.m. .... Program  
4:00 p.m. .... Panel  
Discussion

\*Coral Ballrooms I and II

**No on-site registration for CEC**



## Program Schedule

### 8:15 a.m.

Welcome and Introduction  
Shepard S. Goldstein

### 8:30 a.m.

**Louis E. Rossman, Endodontist**

This presentation will examine treatment decisions utilizing an implant or a natural tooth in the reconstruction or maintenance of arch integrity, as well as examine past, present and future procedures and philosophies that have affected endodontics with the advent of implant dentistry. Successful endodontic treatment and implant placement rely on several factors. At conclusion, each participant should be able to:

- Recognize the changes in maintaining arch integrity with the advent of implant dentistry.
- Determine when endodontic treatment and a standard restoration versus a single tooth implant will provide the most aesthetic result.
- Understand the limitation of a cantilevered restoration abutting a post and core restored natural tooth.
- Know the importance of good endodontic treatment as a predictable and durable procedure.

### 9 a.m. - 2:15 p.m.

**Louis F. Rose, Periodontist**  
**Arnold S. Weisgold, Periodontist and Prosthodontist**

Each participant should gain an understanding of integrated diagnosis, treatment planning and management of the compromised dental patient. The presentation also will describe when to save or extract teeth; current surgical and prosthetic reconstructive procedures necessary to create an environment for success; the criteria necessary to achieve a realistic, predictable result and evaluate the functional and esthetic limitations of an implant-supported restoration. At conclusion, each participant should be able to:

- Diagnose, determine a treatment plan and manage the periodontally compromised patient.
- Create a restoration that performs and looks like the natural foundation.

### 10:15 - 10:45 a.m. - Break

### 12 - 1 p.m. - Lunch

### 2:15 - 2:45 p.m. - Break

### 2:45 - 4 p.m.

**Cindy R. Rauschenberger, Endodontist**

This session will describe the procedures and principles currently used by the endodontist when evaluating and treating periodontally involved teeth. It will also include a review of the procedures necessary for obtaining historical data and clinical information pertinent to assessing the patient's health, the endodontic relationship and the periodontal status. At conclusion, each participant should be able to:

- Discuss the evolution of treatment planning for endodontically involved teeth with concurrent periodontal problems.
- Describe the procedures for obtaining historical data and clinical information pertinent to assessing the patient's health, and the endodontic relationship and their periodontal status.
- Present clinical cases utilizing barrier techniques and discuss materials currently available for these procedures.
- Understand where we are in endodontics with regard to barrier therapy.

### 4 - 4:30 p.m.

### Panel Discussion

### 4:30 p.m. - Adjourment



## Welcome Reception and Silent Auction

**Coral Ballroom (by ticket only)**

### 6:30 - 8:30 p.m.

The Welcome Reception will feature a lighter fare to give the opportunity to enjoy a night on the town. Resort wear is appropriate attire.

## Wednesday CEC



Louis E. Rossman



Louis F. Rose



Arnold S. Weisgold



Cindy R. Rauschenberger

**Welcome Reception and 3rd Annual Alliance Silent Auction Wednesday, March 29, 6:30 - 8:30 p.m.**

Take this opportunity to unwind and mingle with old friends and meet new colleagues. View the auction items and place your bids early. A variety of light hors d'oeuvres will be served.





# Thursday A.M., March 30

## Keynote Address



Harmon R. Katz

## Session 100



Adam Stabholz

## Session 101



Geoffrey S. Heithersay

**Unless otherwise indicated, all sessions will be held at the Hawaii Convention Center.**

The statements and opinions expressed in these course synopses are solely those of the individual speakers. Their statements and opinions do not reflect any opinion or endorsement by the AAE.

*\*Speaker serves as a consultant and/or has a commercial interest in subject matter.*

**Unless otherwise indicated, all sessions will be held at the Hawaii Convention Center.**

## Morning Sessions

### Opening Session Breakfast

**Hilton - Coral Ballroom  
(by ticket only)  
8 - 10 a.m.**

**Keynote: Harmon R. Katz, D.D.S.  
President, American Association  
of Endodontists**

### District Caucuses

**Hilton**

**10 - 10:45 a.m.**

District I ..... Sea Pearl Suite I  
CT, DC, ME, MA, PA, PR, RI, VT, VA

District II\*\* ..... Sea Pearl Suite II  
NJ, NY

District III\*\* ..... South Pacific Ballroom III  
FL, GA, NC, SC, Public Health, Air Force,  
Army, Navy, Veterans Administration

District IV\*\* ..... South Pacific Ballroom IV  
IL, IN, KY, MI, OH, TN, WV, WI

District V\*\* ..... Sea Pearl Suites III and IV  
AL, AZ, AR, CO, IA, KS, LA, MN, MO, MT,  
NE, NM, OK, TX, UT

District VI ..... Sea Pearl Suites V and VI  
AK, CA, HI, OR, WA

\*\*These districts will nominate their candidates to the Board of Directors for a three-year term beginning April 2001.

### Exhibits

**Exhibit Hall (Level 1)  
10:30 a.m. - 6 p.m.**

### Affiliate Leadership Conference

**Hilton - South Pacific Ballroom I  
10:45 a.m. - 12 noon**

AAE Affiliate officers and AAE committee chairs are invited to attend this briefing on current AAE issues and activities.

## Session 100

**Room 312**

**Moderator: Kevin T. King, D.D.S.  
Chicago**

**Does laser technology have a place in endodontics?  
11 a.m. - 12:30 p.m.**

**\*Adam Stabholz, D.M.D., Jerusalem**

Gain a better understanding of the principles involved in the use of lasers in the oral cavity. Learn about the different types of lasers currently available, as well as their characteristics. At conclusion, each participant should be able to:

- Describe the different types of lasers available for use in dentistry and their characteristics.
- Understand the effect of lasers on soft and hard tissues of the oral cavity.
- Identify potential uses for laser technology in endodontics.

## Session 101

**Room 316**

**Moderator: James L. Gutmann,  
D.D.S., Dallas**

**Management of invasive cervical resorption  
11 a.m. - 12:15 p.m.**

**Geoffrey S. Heithersay, B.D.S., M.D.S.  
Adelaide, Australia**

Understand the pathogenesis of invasive cervical resorption. Learn how to diagnose and apply the principles of treatment using the specific regimen outlined in this presentation. At conclusion, each participant should be able to:

- Identify risk groups.
- Recognize this complex type of external root resorption.
- Clinically classify the lesions to provide a basis for realistic case selection.
- Apply the techniques described to the treatment of invasive cervical resorption.



## General Interest 1

Room 317

Moderator: **Lawrence K. Nitta, D.D.S., Honolulu**

### Historic Honolulu Rediscovered 11 a.m. - 12:30 p.m.

**Glen Grant, Honolulu**

White sand beaches, swaying palms, outrigger canoes and bold surfers have long lured legions of visitors to Hawaii, but an equally attractive incentive is Hawaii's unique culture and its royal history. Hawaiian kings and queens held sway over these islands up until the 20<sup>th</sup> century, and their imprint is everywhere, especially on the island of Oahu, home to many of the hallmarks of Hawaii's royal past. This program is open to all attendees, spouses and guests.

Time walk through yesteryear as folklorist and living history interpreter Glen Grant tells the story of how Honolulu grew from the Village of Kou to a wild and woolly seaport filled with sailors, merchants and missionaries to mature into the Pacific metropolis we know today. Explore Honolulu's salad bowl mixture of Hawaii's many ethnicities and their influence on Hawaii. At conclusion, each participant should be able to:

- Understand the unique culture of Hawaii.
- Be aware of the history of the island.

### LAS 1 (Limited Attendance Session) Room 311

#### Orascopy: Endodontists' vision for the new millennium 11 a.m. - 12:15 p.m.

**James K. Bahcall, D.M.D., M.S. Chicago**

**Joseph T. Barss, D.D.S., M.S., Chicago**  
**\*Myron J. Czubko, Ann Arbor, Mich.**  
This session is designed to provide each participant with a better understanding of the application of orascopy for conventional and surgical endodontic treatment,

based on history and clinical application. Each participant will gain an understanding of the optical design and physical considerations used in the state-of-the-art fiber optics design. Considerations in designing a system for endodontics from the ground up also will be covered. At conclusion, each participant should be able to:

- Be familiar with the history and clinical application of orascopic endodontics.
- Identify why orascopy is a better technique for visualization of endodontic etiology.
- Describe the difference between magnification and differentiation.
- Understand how and why fiber optics work.
- Be able to interface fiber optics with a monitor.

### LAS 2 (Limited Attendance Session) Room 314

#### Management of trauma: New modalities 11 a.m. - 12:15 p.m.

**Roberta Pileggi, D.D.S., M.S. Houston**

Traumatic injuries are becoming more commonplace in today's practices. Problems associated with trauma include controversial treatments, unsophisticated diagnostic tests, difficult diagnoses and inability to predict success. Participants will gain an understanding of the principles of treating a patient with a traumatized tooth. At conclusion, each participant should be able to:

- Discuss theories on variability of pulpal response following trauma.
- Understand the biological reasons for the unreliability of a pulp test.
- Cite outcomes following traumatic injuries.
- List appropriate treatment modalities.
- Provide an evidence-based approach to trauma in clinical practice.

## General Interest I



Glen Grant

### President's Dinner Dance

#### Enter the Dragon Gala

Celebrate the Chinese New Year – the Year of the Dragon. Join the Lion Dance as it makes its way with color and sound from the pre-dinner dance reception into the festive dining room.

Enjoy a sumptuous Chinese dinner in an elegant setting, then dance to the music of the Motor City Angels. Whether your beat is swing, big band or pulsating Latin rhythms, you're sure to like this popular group!

Remember to **exchange your dinner dance vouchers by 5 p.m. Thursday, March 30** at the dinner dance counter at the Hilton.

### Limited Attendance Sessions (LAS)

#### Limited Seating

**NO standing permitted**

*\*Speaker serves as a consultant and/or has a commercial interest in subject matter.*



## Thursday A.M., March 30

### Limited Attendance Sessions

Seating is limited.  
**NO** standing permitted.

**Audio and video  
taping are allowed  
only with  
permission of  
the speaker.**

### Tape Recording

Many of the sessions will be tape-recorded. Stop by the Sound of Knowledge desk in the Hawaii Convention Center to purchase audio tapes.

*\*Speaker serves as a consultant and/or has a commercial interest in subject matter.*

### **LAS 3** (Limited Attendance Session) Room 315

#### **Retreatment techniques for all occasions** 11 a.m. - 12:15 p.m.

**Keith V. Krell, D.D.S., M.S., M.A.**  
West Des Moines, Iowa

Over 25 percent of current case referrals are for retreatment. This presentation will describe considerations for determining the appropriate surgical or nonsurgical approaches in difficult retreatment cases and will assist you in making recommendations to patients on the best approach for his or her case. At conclusion, each participant should be able to:

- State a rationale for problem-solving in difficult retreatment cases.
- List a variety of nonsurgical treatment techniques with a cost-benefit model for using the techniques.
- Describe treatment plan cases for both surgical and nonsurgical retreatment at one appointment.

### **LAS 4** (Limited Attendance Session) Room 318

#### **One-step apexification with tricalcium phosphate** 11 a.m. - 12:15 p.m.

**Henry L. Harbert, D.M.D.**  
Everett, Wash.

This presentation is designed to illustrate the technique and rationale for single-step use of tricalcium phosphate as an apical plug in an immature permanent root. Information on immediate obturation of the clean, dry canal will be presented. This technique may be considered for open palatal foramine and furcation perforations. At conclusion, each participant should be able to:

- Describe this versatile technique.
- Understand the technique.
- Be familiar with the scientific rationale for this innocuous, inexpensive material.

### **LAS 5** (Limited Attendance Session) Room 323

#### **Evaluation of the critical abutment** 11 a.m. - 12:15 p.m.

**Jack S. Roth, D.D.S., New York**

With the proliferation of implant dentistry, an interdisciplinary approach is needed to evaluate critical and compromised abutments. Every endodontist should be able to evaluate critical teeth prior to a periodontic or prosthetic decision for extraction and implants. Each participant should be able to give that endodontic perspective as well as understand the rationale behind our colleagues' decisions. At conclusion, each participant should be able to:

- Describe the historical success and failure in maintaining these critical teeth.
- Understand the periodontal complex more completely, including the quality of bone surrounding these abutments.
- Comprehend the endo perspective in maintaining compromised teeth.
- Describe the current controversies and thinking facing dentistry prior to tooth extraction and implant placement.

### **LAS 6** (Limited Attendance Session) Room 324

#### **Chemotherapeutic intervention in trauma** 11 a.m. - 12:15 p.m.

**\*Linda G. Levin, D.D.S.**  
Chapel Hill, N.C.

This presentation will cover chemotherapeutic interventions in trauma that are presently in use and those on the horizon. At conclusion, each participant should be able to:

- Describe the different pre-replantation treatments for avulsed teeth that have been shown to maximize tooth retention.
- Understand new experimental techniques that show promise for the inhibition of external root resorption subsequent to trauma.
- Evaluate the appropriate treatment regimens for avulsed teeth with different extraoral times.



## **LAS 7** (*Limited Attendance Session*) Room 325

### **How to start a new endodontic practice** 11 a.m. - 12:15 p.m.

**Keith G. Kanter, D.D.S., Orlando, Fla.**  
Plan for success! Endodontic residents, recent graduates or any endodontist who is starting an endodontic practice will learn necessary criteria for selecting a practice location, obtaining bank financing for new and future development and growth, marketing the practice to general dentists, as well as hiring and empowering an incredible office staff. Gain an awareness of technical advances, learn to determine what is essential to your practice and how to incorporate them into your practice. At conclusion, each participant should be able to:

- Develop considerations in picking a geographic location.
- Design your office to suit your practice style.
- Determine what technology is essential to your practice.
- Identify steps involved in obtaining bank financing.
- Develop procedures for hiring qualified staff or incorporating staff in office advances.
- Design a plan for future development and growth of your practice.

## **LAS 8** (*Limited Attendance Session*) Room 328

### **Submitting abstracts and research grant proposals** 11 a.m. - 12:15 p.m.

**Harold E. Goodis, D.D.S.**  
San Francisco  
**Kenneth M. Hargreaves, D.D.S., Ph.D.**  
San Antonio, Texas  
**Van T. Himel, D.D.S., Memphis, Tenn.**  
Write better grant applications! Learn all aspects of the abstract and grant submission process, including acceptable researchable questions, protocol, obtaining program statistical consultation and working within the format. Session participants should come prepared with

questions for the AAE Research and Scientific Affairs Committee. At conclusion, each participant should be able to:

- Identify a researchable question acceptable to the AAE.
- Understand the protocol required by the Research and Scientific Affairs Committee for development of a grant.
- Realize the advantage of obtaining program statistical consultation.
- Appreciate the importance of working within the format and instruction of the funding agency.
- Be familiar with the protocol for writing an abstract for submission to the AAE.

## **Oral Research Presentations I**

Room 327

**Moderator: Timothy A. Svec, D.D.S.**  
Houston

### **Graduate Student Section** 11 a.m.

*Treatment choices when restoring teeth endodontically treated through artificial crowns*

Glenn A. Trautmann, D.M.D. (presenter)  
J.L. Gutmann, D.E. Witherspoon &  
M.E. Nunn, Baylor College of Dentistry

### **11:15 a.m.**

*Effects of nuclear transcription factor inhibitors on P. gingivalis and IL-1 stimulation*

Toby S. Wilson, D.D.S. (presenter)  
D.T. Graves, A.J. Valente & H. Schilder  
Boston Univ. & Univ. of Texas

### **11:30 a.m.**

*Evaluation of coronal microleakage of five materials in the pulp chamber of endodontically treated teeth*

Robert R. Galvan Jr., D.D.S. (presenter)  
L.A. West, F.R. Liewehr & D.H. Pashley  
U.S. Army Dental Activity & Medical College of Georgia

## **Dinner Dance Voucher Exchange**

Dinner Dance vouchers **must be exchanged by 5 p.m. Thursday, March 30** at the Dinner Dance counter at the Hilton Hawaiian Village. Tables seat 10 people so gather your friends and make arrangements early to enjoy this special evening.

## **Need a Break?**

**Complimentary coffee will be provided in the exhibit hall at the following times:**

**Thursday .... 10:30 a.m.**  
**Thursday ..... 2:45 p.m.**  
**Friday ..... 10:30 a.m.**  
**Friday ..... 2:30 p.m.**  
**Saturday .... 10:30 a.m.**

**Beginning at 11 a.m., Thursday, March 30, education sessions will be held at the Hawaii Convention Center.**

Louis I. Grossman  
Memorial Luncheon



John W. Slocum Jr., Ph.D.



**Thursday P.M., March 30**

*Oral Research Presentations*

**11:45 a.m.**

*Effects of calcium hydroxide and TGF-B1 on collagen synthesis in subculture I and V of osteoblasts*

Andris Jaunberzins, B.D.S. M.S., (presenter)  
J.L. Gutmann, D.E. Witherspoon &  
R.P. Harper, Baylor College of Dentistry

**12 noon**

*Effects of eugenol on resin bond strengths to root canal dentin*

Emmanuel C. Ngoh, D.M.D. (presenter)  
D.H. Pashley, R.J. Loushine, R.N. Weller &  
W.F. Kimbrough  
Medical College of Georgia

**Afternoon Sessions**

**Louis I. Grossman  
Memorial Luncheon**

Kalakaua Ballroom C

Sponsored by the College of Diplomates

**Moderator: M. Lamar Hicks, D.D.S.,  
M.S., Jenkintown, Penn.**

**Developing High Performance  
Organizations**

**12:30 - 1:45 p.m.**

**Keynote: John W. Slocum Jr., Ph.D.  
Paul Corley Professor of Organizational  
Behavior at the Cox School of Business,  
Southern Methodist University**

The Louis I. Grossman Memorial Luncheon honors endodontists who have earned Board certification during the previous calendar year. Dr. John W. Slocum Jr., is an internationally known expert in goal setting, the decision sciences, and organizational dynamics and behavior.

**American Board of  
Endodontics**

Room 328

**Moderator: William T. Johnson,  
D.D.S., M.S.  
Iowa City, Iowa**

**The Board Walk: Becoming  
a Diplomate**

**2 - 5 p.m.**

**Paul J. Ashkenaz, D.D.S., M.S.  
Chicago**

**Charles J. Cunningham, D.D.S.  
Gainesville, Fla.**

**Gerald N. Glickman, D.D.S., M.S.  
Houston**

**Gary R. Hartwell, D.D.S.  
Richmond, Va.**

**Billie G. Jeansonne, D.D.S., Ph.D.  
New Orleans**

**William T. Johnson, D.D.S., M.S.  
Iowa City, Iowa**

**Marshall D. Peikoff, D.M.D., M.S.D.  
Winnipeg, Canada**

**H. Robert Steiman, D.D.S., Detroit  
Martin Trope, B.D.S., D.M.D.  
Chapel Hill, N.C.**

The Directors of the American Board of Endodontics will discuss the process required for Board certification. Changes in the sequencing of the examination will be outlined. Each phase of the examination process (written examination, case history portfolio and oral examination) will be discussed and suggestions provided for preparation and successful completion of each portion of the certification process. The program is designed to provide interested individuals the opportunity to interact with the Directors and to clarify concerns regarding the certification process.



## Oral Research Presentations II

Room 327

Moderator: Al Reader, D.D.S., M.S.  
Columbus, Ohio

### Graduate Student Section

#### 2 p.m.

*Effect of an intraosseous injection of Depo-Medrol in conjunction with an indirect pulp cap for the treatment of irreversible pulpitis*

Matthew S. Niemiec, D.D.S. M.S.  
(presenter)

A. Reader & M. Beck, Ohio State Univ.

#### 2:15 p.m.

*Effect of enamel matrix derivative on gene expression of primary osteoblasts*

Jin Jiang, D.D.S. (presenter)

K.E. Safavi, L.S.W. Spangberg & Q. Zhu,  
Univ. of Connecticut

#### 2:30 p.m.

*Preliminary evaluation of an alternative method to treat post-obturation bacterial leakage*

Timothy C. Kirkpatrick, D.D.S. (presenter)  
W.G. Schindler, W.A. Walker & D.D.

Thomas, Wilford Hall Medical Center &  
Univ. of Texas at San Antonio

#### 2:45 p.m.

*In vitro microscopic analysis of apical 3mm obturation after GT, LightSpeed and ProFile canal preparation*

Louay Abrass, D.M.D. (presenter)  
M. Oviedo-Marmo & H. Walsch,

Univ. of Pennsylvania

#### 3 p.m. - Break

#### 3:15 p.m.

*Hard tissue forming potential of MTA compared to common endodontic filling materials*

Nooshin Noghreian, D.D.S. (presenter)  
S. Shabahang, T. Linkhart, J. Farley &

M. Torabinejad, Loma Linda Univ.

#### 3:30 p.m.

*Systematic review of resurgery outcomes of persistent endodontic lesions*

Jill Peterson, D.D.S., M.P.H. (presenter)  
J.L. Gutmann, Baylor College of Dentistry

#### 3:45 p.m.

*Identification of gamma delta T lymphocytes in human periapical lesions*

Baljit S. Uppal, D.D.S. (presenter)

J.J. Jimenez, P.A. Rosenberg &

J.A. McCutcheon, New York Univ.

#### 4 p.m.

*Apical diffusion of calcium hydroxide using an in vitro model*

Geoffrey H. Robert, D.D.S. (presenter)

L.A. West, F.R. Liewehr & J.C. McPherson,  
U.S. Army Dental Activity

#### 4:15 p.m.

*Effects of relation techniques on pain perception*

Eugene H. Choi, D.D.S. (presenter)

A.K. Mickel, Case Western Reserve Univ.

## Oral Research Presentations III

Room 326

Moderator: Asgeir Sigurdsson,  
D.D.S., M.S.  
Chapel Hill, N.C.

### Endodontist Section

#### 2 p.m.

*Effect of neuropeptide Y on capsaicin-evoked release from dental pulp*

Kenneth M. Hargreaves, D.D.S., Ph.D.  
(presenter)

J. Gibbs, A. Poon & C. Flores,  
Univ. of Texas at San Antonio

#### 2:15 p.m.

*Four NiTi canal preparation techniques evaluated by micro-computed tomography*

Kathrin Schoenenberger, D.D.S. (presenter)

A. Laib, Univ. of Zurich, Switzerland

#### 2:30 p.m.

*Six-year evaluation of cracked teeth diagnosed with reversible pulpitis:*

*Treatment and prognosis*

Keith V. Krell, D.D.S., M.S. (presenter)

E.M. Rivera, Univ. of Iowa

#### 2:45 p.m.

*Secretion of PGE<sub>2</sub> from monocytes exposed to MTA or Portland cement*

Kamran Safavi, D.M.D., M.Ed. (presenter)

F.C. Nichols, Univ. of Connecticut

## Dinner Dance Voucher Exchange

Dinner Dance vouchers must be exchanged by 5 p.m. Thursday, March 30 at the Dinner Dance counter at the Hilton Hawaiian Village. Tables seat 10 people so gather your friends and make arrangements early to enjoy this special evening.

Session 102



Fred Barbakow



Christine I. Peters



Ove A. Peters



Peter Velvart

**Insurance Questions?**

Treloar and Heisel has been the endorsed administrator of insurance programs for the AAE for more than 18 years. Stop by their booth near the AAE registration area.



**Thursday P.M., March 30**

*Oral Research Presentations*

**3 p.m.**

*Histologic study of periapical tissue reaction to endodontic treatment with and without coronal microleakage in cats*  
Abdullah Soluti, D.D.S. (presenter)  
Mashad Univ., Iran

**3:15 p.m.**

*Transportation of curved canals after canal enlargement by filing instruments*  
Ho-Keel Hwang, D.D.S., M.S.D., Ph.D. (presenter)  
J.B. Min, J.A. Jung & S.H. Han  
Chosun Univ., Korea

**3:30 p.m.**

*Small, collagen-binding proteoglycans in dentin/pulp complex*  
Shizuko Yamauchi, D.D.S., M.S. (presenter)  
H. Cheng & M. Yamauchi,  
Univ. of North Carolina

**3:45 p.m.**

*A method to assess rotary nickel-titanium files*  
Timothy A. Svec, D.D.S., M.S. (presenter)  
J.M. Powers, Univ. of Texas at Houston

**4 p.m.**

*Effects of rotary instruments and ultrasonic irrigation on debris and smear layer scores*  
Birgit Mayer, D.M.D. (presenter)  
O. Peters, Univ. of Zurich, Switzerland

**4:15 p.m.**

*Essential endodontic literature: A comparison of survey results to citation analysis*  
Bradford R. Johnson, D.D.S. (presenter)  
Univ. of Illinois at Chicago

**4:30 p.m.**

*Histological study of the effects of NSAIDs on acute apical inflammation following RCT in cats*  
Mehdi Monsef, D.M.D. (presenter)  
A. Soluti, Mashad Univ., Iran

**Session 102**

**Room 311**

**Moderator:** Fredric Goodman, D.D.S.  
New York

**Emerging technology in endodontics in Switzerland 2 - 5 p.m.:**

**Fred Barbakow, B.D.S., M.Sc., Zurich**  
**Christine I. Peters, D.D.S., Zurich**  
**Ove A. Peters, D.D.S., Zurich**  
**Peter Velvart, D.M.D., Zurich**

Learn about the latest advances made in endodontics in Switzerland, including the potential clinical and scientific impact on the specialty. Discussions will include the procedural errors during orthograde and retrograde therapy, allowing for a better understanding of treatment perforations using selected materials, along with recent in vitro results on retropreparations and retrofillings. Participants also will learn procedures used to diagnose and select adequate treatment modalities for managing calcified canals and to compare the potential of conventional and surgical treatment to handle complex cases. At conclusion, each participant should be able to:

- Understand the advances made in endodontics in general and the challenges still facing Swiss clinicians.
- Determine how experimental re-assembly techniques are used to evaluate root canal biometry before and after preparation.
- Describe clinical findings after five years experience with different engine-driven preparation techniques.
- Know how perforations are currently managed using operating microscopes and different types of materials.
- Realize the effect of ultrasonic retropreparations on root end dentin and the marginal adaptation of retrofillings after stressing for a five-year equivalent.
- Learn how to choose state-of-the-art diagnostic tools and interpret their results correctly.
- Select a more suitable treatment protocol.
- Determine how these advances could benefit the treatment outcome.
- Understand the limitations of surgical and conventional strategies.



## Session 103

Room 312

Moderator: Frank Casanova, D.D.S.,  
M.S.D., Daly City, Calif.

### Experiencing exceptional endodontic outcomes through technical skills and leadership 2 - 5 p.m.

\*Brian DesRoches, Ph.D., Seattle  
John D. West, D.D.S., M.S.D., Center  
for Endodontics, Tacoma, Wash.

This workshop takes a unique look at experiencing exceptional endodontic outcomes by focusing on leadership of both the technical and human side of our practices. Each participant will be able to describe assessment and diagnostic abilities, ways of thinking and problem-solving skills used in endodontics that can be applied in the human dimension of our practices and our lives. Participants will develop a blueprint to create the experiences they want to have as specialists and leaders. At conclusion, each participant should be able to:

- Transfer their existing skills as a specialist to enhance their abilities as a leader (and vice-versa).
- Describe the importance and complementary nature of having a vision of what you desire for yourself as a specialist and as the leader in your practice.
- Implement proven skills to effectively manage the challenges of being the leader of both the technical process of endodontics and the human process with people.
- Understand the sources of distractions that inhibit the achievement of specific desired results.

## Session 104

Room 314

Moderator: Cindy R. Rauschenberger,  
D.D.S., M.S., Elgin, Ill.

### The microscope in clinical endodontics 2 - 5 p.m.

Scott K. Bentkover, D.D.S.

Evanston, Ill.

Stephen P. Niemczyk, D.M.D.

Drexel Hill, Pa.

Gain an understanding of how endodontic treatment utilizing a microscope may be enhanced by knowledge and application of specific micro-endodontic techniques and instrumentation, enabling the practitioner to successfully treat cases that were previously unattainable. Learn to identify and describe the techniques of microscope-assisted endodontic surgery and the associated armamentarium. At conclusion, each participant should be able to:

- Describe the current configurations of microscopes available today.
- Develop strategies to integrate the microscope into a busy endodontic practice.
- Understand the full potential of incorporating the microscope into an "every day, every patient" mentality.
- Describe DOM/patient positioning as it relates to the access of anterior and posterior surgical sites.
- Understand the use of biocompatible materials (MTA, Ca(So)<sub>4</sub>, etc.) and their applications in root-end surgery.
- Develop the strategies for unusual surgical presentations and implementation of existing bio-technology (*i.e.* vertical root fracture repair, sinus/root perforation repair).

## Session 103



Brian  
DesRoches



John D. West

## Session 104



Scott K.  
Bentkover



Stephen P.  
Niemczyk

Committee meetings and  
alumni functions are listed  
on pages 42 and 43.

\*Speaker serves as a consultant  
and/or has a commercial interest  
in subject matter.





Session 105



James L. Gutmann

Session 105

Room 316 (Japanese translation)

Moderator: **Terryl A. Propper, D.D.S., M.S.**  
Nashville, Tenn.

Contemporary obturation techniques: Applications and assessment

2 - 5 p.m.

**James L. Gutmann, D.D.S., Dallas**

This presentation will describe the vast array of contemporary root canal obturation techniques that are currently available, including the parameters, principles and uniqueness of each. At conclusion, each participant should be able to:

- Detail the parameters of each obturation technique.
- Describe the principles of the technique and the uniqueness of application for each one discussed.
- Identify the strengths and potential shortcomings of each technique.
- Relate the use of each technique to the uniqueness of the root canal anatomy.

*In cooperation with the Japan Endodontic Association, Session 105 will be translated simultaneously into Japanese.*

Session 106

Room 323

Moderator: **John S. Olmsted, D.D.S., M.S., Greensboro, N.C.**

The art and science of variably tapered technique

2 - 5 p.m.

\***L. Stephen Buchanan, D.D.S., Santa Barbara, Calif.**

Learn the technique for using variably tapered rotary files and warm gutta-percha obturation. This session will cover necessary information to determine treatment strategies for anatomic variations and how to prevent unwanted results. At conclusion, each participant should be able to:

- Describe the concepts and techniques associated with variably-tapered rotary files and the newest generation of obturation techniques.

- Determine treatment strategies for anatomic variations.
- Predict expected outcomes to prevent unwanted results.
- Have a knowledge of new developments in this treatment system and of university-based research on its efficacy and safety.

This session will not be taped.

Session 107

Room 324

Moderator: **Louis E. Rossman, D.M.D.**  
Philadelphia

Research science

2 - 5 p.m.

**Syngcuk Kim, D.D.S., Ph.D.**  
Philadelphia

**Hideaki Suda, D.D.S., Ph.D., Tokyo**

The interaction between sensory nerves and microcirculation in a pathologic state provides a unique opportunity to study the cellular mechanisms of inflammation via nitric oxide, cGMP and various neuropeptides released from the sensory nerves. This state is called neurogenic inflammation. Some new and interesting findings on the etiology of hypersensitive teeth and lasting effects on the dentin also will be discussed. In addition, the physiological basis of diagnostic tests, such as cold and heat tests, will be introduced. Learn how to describe the principles involved in treating patients who present with pulpal inflammation and hypersensitive teeth. At conclusion, each participant should be able to:

- Understand the role of sensory nerves and microcirculation in initiation and progression of pulpal inflammation.
- Describe the cellular mechanisms of pulpal inflammation.
- Understand the immunodefense system of the dental pulp.
- Describe the newest etiology of dentin hypersensitivity.
- Describe the physiological basis of cold and heat test responses.

Session 106



L. Stephen Buchanan



Hideaki Suda



Syngcuk Kim

*\*Speaker serves as a consultant and/or has a commercial interest in subject matter.*



## General Interest 2

Room 317

Moderator: **Irving Fried, D.D.S., M.A.**  
New York

### How to design your own Super Second Life

2 - 5 p.m.

**Gordon L. Burgett, M.A.**  
Santa Maria, Calif.

Endodontists have two lives: the usual 40-50 years and the extra 30 years we all have been given since 1900. Here we talk about how to plan and fully enjoy the last 30 years! At conclusion, each participant should be able to:

- Describe the six steps to take to fully plan one's Super Second Life.
- Understand how this specifically applies to endodontists.
- Understand how one can use and expand a professional dental career and training, if desired, during those extra 30 years.

## Staff Session 1

Room 315

Moderator: **Charles L. Steffel, D.D.S., M.S.D., Indianapolis**

### The art of the winning team: Essential communication skills for the dental team

2 - 5 p.m.

**Debra Engelhardt, Charlotte, N.C.**

Learn the most valuable skill of all—how to communicate effectively with patients. This workshop will provide training that will help each participant communicate with skill and confidence. How you say it is just as important as what you say. It is one thing to have the knowledge, expertise and desire to provide the best care for patients. It is another to gain their understanding. In this program, the dental health care team will learn how to build rapport and goodwill to increase patient satisfaction. Specific tools for everyday utilization will be provided. At conclusion, each participant should be able to:

- Overcome patient objections.
- Introduce treatment possibilities.
- Make an impact with the first impression.

- Determine criteria to measure patient satisfaction.
- Understand the value of the written word.
- Help patients and referrals understand your office.

Stay after this session for networking and light refreshments.

## LAS 9 (Limited Attendance Session)

Room 318

### A longitudinal look at MTA

2 - 3:15 p.m.

**Blair T. Johnson, D.D.S., M.S.**  
Eau Claire, Wis.

Improve your understanding of the longitudinal success and failure with MTA, as it relates to specific procedures. At conclusion, each participant should be able to:

- Describe different uses of MTA.
- Discuss the role of case selection as it relates to the prognosis of specific procedures.
- Understand technique sensitivity associated with delivery of MTA.

## LAS 10 (Limited Attendance Session)

Room 325

### Microscopic endodontics for your practice

2 - 3:15 p.m.

**Leslie C. H. Ang, B.D.S., M.S.**  
Singapore

This presentation will explain how to incorporate the surgical operating microscope into your practice. Learn how to use microscopic techniques in treating difficult cases with a higher level of ease and confidence; how the microscope is used in diagnosis; and retreatment and location of calcified canals. At conclusion, each participant should be able to:

- Discuss how the microscope is used in diagnosis, retreatment, location of calcified canals and management of procedural errors like perforations and separated instruments.
- Describe the techniques, achievements and benefits of microsurgery.

## General Interest 2



Gordon L. Burgett

## Staff Session 1



Debra Engelhardt

## Japanese translation

In cooperation with the Japan Endodontic Association, the following presentations will be translated simultaneously into Japanese:

Thursday, March 30  
**Session 105** - 2 p.m.  
Contemporary obturation techniques: Applications and assessment  
James L. Gutmann

Friday, March 31  
**Session 202** - 8:30 a.m.  
FINISHING: The essence of exceptional endodontics  
John D. West

**Session 209** - 1 p.m.  
Expanded clinical horizons on MTA  
Noah Chivian  
Mahmoud Torabinejad

Saturday, April 1  
**Session 302** - 8:30 a.m.  
Vital pulp therapy: Microleakage/microbiology and toxicity  
Charles F. Cox  
Harold R. Stanley

Oral Research Presentations are scheduled on Thursday and Friday, March 30 and 31.

Table Clinics and Poster Sessions are scheduled in the morning on Friday and Saturday, March 31 and April 1.

**Shuttle buses will be provided between the Hilton Hawaiian Village and the Convention Center according to the following schedule:**

**Thursday, March 30**  
9:30 a.m. - 12 noon  
4 - 6:30 p.m.

**Friday, March 31**  
7 - 10 a.m.  
3:30 - 5:30 p.m.

**Saturday, April 1**  
7 - 10 a.m.  
1 - 3 p.m.

**Departure and arrival at Tapa Tower at the Hilton**

*\*Speaker serves as a consultant and/or has a commercial interest in subject matter.*



## Thursday P.M./Friday A.M., March 31

- Understand how the microscope approach overcomes the disadvantages of conventional techniques, producing better results.
- Discuss the benefits of guided tissue regeneration procedures in microsurgery.

### **LAS 11** (*Limited Attendance Session*) Room 318

#### **Maximizing the endodontic back office** 3:30 - 5 p.m.

**\*Joseph S. Dovgan, D.D.S., M.S.**  
Paradise Valley, Ariz.

Analyze routine tasks completed during back office operations and maximize each for value and efficiency. At conclusion, each participant should be able to:

- Demonstrate a better understanding of the importance of physical layout, organization and standardized operating procedures for back office efficiency.
- Develop concepts to implement a container- and cassette-based infection control system that expedites operatory set-up and take-down.
- Select and modify equipment for maximum automation of the instrument cleaning and sterilizing process.
- Realize low cost alternatives for commonly used items such as instrument wraps, ultrasonic solutions, waterline and vacuum disinfection.

### **LAS 12** (*Limited Attendance Session*) Room 325

#### **That root-filled tooth now has a periapical area: Policies, trends and technology for managing failures** 3:30 - 5 p.m.

**Paul V. Abbott, M.D.S.**  
Ivanhoe, Australia

Assess the reasons for the presence of periapical radiolucencies and then use this knowledge to determine appropriate treatment. At conclusion, each participant should be able to:

- Assess reasons for failure of previous treatment.
- Plan how to manage failures and achieve predictable results.
- Use simple, safe techniques for post removal and retreatment.
- Determine when surgery is indicated.
- Advise patients about probable outcomes, based on research data.

### **Morning Sessions**

#### **Continental Breakfast**

Exhibit Hall (Level 1)  
(by ticket only)  
7:30 - 8:30 a.m.

#### **Exhibits**

Exhibit Hall (Level 1)  
7:30 a.m. - 5 p.m.

#### **Oral Research Presentations IV**

Room 327

**Moderator: James D. Johnson,**  
D.D.S., M.S.  
Bethesda, Md.

#### **Graduate Student Section** 8:30 a.m.

*Comparison of octylcyanoacrylate and sutures for oral surgical wound closure*  
Anthony G. McNaught, B.D.S. (presenter)  
D.E. Witherspoon, J.L. Gutmann &  
M.E. Nunn, Baylor College of Dentistry

#### **8:45 a.m.**

*Extracellular calcium effect on mobilization of intracellular calcium in odontoblasts*  
Stella Carollo-Roit, D.D.S. (presenter)  
R. Davidson, S. Hoang, P. Lee &  
P.A. Rosenberg, New York Univ.

#### **9 a.m.**

*Effect of intraosseous injection of Depo-Medrol on pulpal concentrations of PGE<sub>2</sub> and IL-8 in untreated irreversible pulpitis*  
James D. Isett, D.M.D. (presenter)  
E. Gallatin, A. Reader, M. Beck &  
D. Padgett, Ohio State Univ.

## Friday A.M., March 31



### 9:15 a.m.

*Monocyte chemoattractant Protein-1 (MCP-1) is critical in the pathogenesis of lesions of endodontic origin*

Paul Chae, D.D.S. (presenter)  
M. Im, H. Schilder & D.T. Graves  
Boston Univ.

### 9:30 a.m.

*Impact of dental devices on cochlear implants*

Steven Roberts, D.D.S. (presenter)  
L.A. West, F.R. Liewehr, F.A. Rueggeberg & B. Potter, U.S. Army Dental Activity & Medical College of Georgia

### 10 a.m.

*Evaluation of nicotinic agonists as a novel analgesic for endodontic pain*

Tracy M. Clark, D.D.S. (presenter)  
S. Gilbert & C.M. Flores  
Univ. of Texas at San Antonio

### 10:15 a.m.

*Toronto Endodontic Treatment Outcome Study, phase 1 (1993-1995): Preliminary report*

Sarah Abitbol, D.D.S. (presenter)  
H.P. Lawrence, S. Friedman, Univ. of Toronto

### 10:30 a.m.

*In vitro bacterial penetration of endodontically treated teeth coronally sealed with a dentin bonding agent*

Gary A. Wolanek, D.M.D. (presenter)  
R.J. Loushine, R.N. Weller, W.F. Kimbrough & K.R. Volkman, Medical College of Georgia

### 10:45 a.m.

*Comparative evaluation of three root-end filling materials: An in vitro leakage study using *Prevotella nigrescens**

Sonia Q. Scheerer, D.D.S. M.S. (presenter)  
H.R. Steiman & J. Cohen  
Univ. of Detroit Mercy

### 11 a.m.

*Antimicrobial activity of various calcium hydroxide preparations in root canal dentin*

Michael J. Behnen, D.D.S. (presenter)  
L.A. West, F.R. Liewehr, T.B. Buxton, J.C. McPherson III & P.D. Brewer  
U.S. Army Dental Activity & Eisenhower Medical Center

## Oral Research Presentations V

Room 326

Moderator: B. Ellen Byrne, D.D.S., Ph.D., Richmond, Va.

### Endodontist Section

#### 8:30 a.m.

*Effect of heat and solvent on physical behavior of gutta-percha*

Salsabyl Ibrahim, D.D.S., M.S.D. (presenter)  
G. El-Hilally & D.M. Ibrahim  
Cairo Univ., Egypt

#### 8:45 a.m.

*Adhesion of osteoblasts to root-end filling materials*

Qiang Zhu, D.D.S. (presenter)  
R. Haglund, K.E. Safavi & L.S.W. Spangberg  
Univ. of Connecticut

#### 9 a.m.

*Biocompatibility of orthograde and retrograde root canal filling materials*

Brita Willershausen, D.D.S. (presenter)  
B. Hagedorn, D. Schafer & B. Briseno  
Johannes Gutenberg Univ., Germany

#### 9:15 a.m.

*Electrical and dye leakage comparison of MTA, sEBa and IRM*

Bayardo Martell, D.D.S. (presenter)  
N. Chandler, Francisco Marroquin Univ. Guatemala, and Univ. of Otago, New Zealand

#### 9:30 a.m.

*S.E.M. study of finishing techniques of retrofillings*

Mohamed M. Khalefa, B.D.S., M.Sc., Ph.D. (presenter)  
Al-Azhar Univ., Egypt

#### 9:45 a.m.

*Anatomy of the apical region of the root canal*

Randall Madsen, D.D.S. (presenter)  
R.E. Walton & L.A. Baldassari-Cruz  
Univ. of Iowa

#### 10 a.m.

*Postoperative pain following one-versus two-visit root canal therapy: A preliminary report*

Bradford R. Johnson, D.D.S. (presenter)  
T. Gresla, A. DiRenzo, M. Rogers, D. Tucker, N.A. Remeikis & E.A. BeGole  
Univ. of Illinois at Chicago

## Visit the Exhibits

at the  
Convention Center  
to see the latest in  
products and services  
and to thank the  
exhibitors who help  
defray part of your  
annual session cost.

### Need a Break?

Complimentary coffee  
will be provided in the  
exhibit hall at the  
following times:

Thursday .... 10:30 a.m.

Thursday ..... 2:45 p.m.

Friday ..... 10:30 a.m.

Friday ..... 2:30 p.m.

Saturday ..... 10:30 a.m.

F  
R  
I  
D  
A  
Y



## Friday A.M., March 31

### Session 200



Kenneth A.  
Koch

#### 10:15 a.m.

*Gene expression of two enamel proteins in experimentally induced pulpal inflammation in rat molars*

Cheng D. Fong, D.D.S., M.A. (presenter)  
L. Hammarstrom, Columbia Univ. and  
Karolinska Institute, Denmark

#### 10:30 a.m.

*Evaluation of instrumentation techniques by computerized tomography*

Ismail I. Elsherif, B.D.S., M.Sc., Ph.D. (presenter)  
Al-Azhar Univ., Egypt

#### 10:45 a.m.

*Surface analysis of GT rotary ProFile files*

Antonio Bonaccorso, D.D.S. (presenter)  
E. Rapisarda & T.R. Tripi  
Univ. of Catania, Italy

#### 11 a.m.

*Comparative study of postoperative periapical inflammation with and without astemizole premedication in cats*

Abdullah Soluti, D.D.S. (presenter)  
M. Bidar, M. Saatchi, Mashad Univ., Iran

#### 11:15 a.m.

*Descriptive effects of RBS-Pow-R and Lightspeed systems on mesial roots of lower molars: A comparative study*

Franklin Pineda, D.D.S. (presenter)  
R. Perez & S. Kutler  
Univ. Tecnologica de Mexico

### Session 200

Room 311

Moderator: **Gerald C. Dietz Jr., D.D.S., Bloomfield Hills, Mich.**

#### Nickel-titanium rotary instrumentation

8:30 - 11 a.m.

\***Kenneth A. Koch, D.M.D.**  
Tulsa, Okla.

Review the indications and use of various nickel-titanium rotary systems. The concept and applications of torque control electric motors and the techniques utilized to prevent instrument separation will be covered. At conclusion, each participant should be able to:

- Describe when and how you might use various rotary systems.

- Understand the concept and applications of torque control electric motors.
- Develop techniques to prevent instrument separation.
- Define the term "hybrid" as it relates to NiTi instruments.
- Understand the concept of retreatment utilizing NiTi rotary instrumentation.

### Session 201

Room 312

Moderator: **Kirk A. Coury, D.D.S., M.S., Amarillo, Texas**

#### Part I: Dental malpractice issues

8:30 - 9:45 a.m.

**Frank A. Anderson, J.D.**  
Johnson City, Tenn.

Avoid malpractice litigation! This session is designed to illustrate the importance of being familiar with basic elements of a malpractice case. Learn the most common reasons a healthcare provider is sued for malpractice and the best ways to avoid being sued. Learn the most effective ways to assist your legal counsel if sued, including preparing for a deposition as a defendant or testifying expert. At conclusion, each participant should be able to:

- Understand the definition of malpractice: What is it and when can it be filed?
- Describe the myths about malpractice cases.
- Know major reasons a malpractice suit is filed and ways to avoid being the subject of a malpractice suit.
- Understand how to prepare for depositions as a defendant or testifying expert witness.

#### Part II: Minimizing bankruptcy losses

9:45 - 11:00 a.m.

**Margaret Fugate, J.D.,**  
Johnson City, Tenn.

Can a bankrupt patient account be recovered? What is the proper process to follow? The practitioner will learn how to file a claim without outside legal assistance and how to monitor payment of the claim. The practitioner also will learn how

### Session 201



Frank A.  
Anderson



Margaret  
Fugate

\*Speaker serves as a consultant and/or has a commercial interest in subject matter.



he/she may legally deal with a patient who has discharged a debt in bankruptcy and seeks future dental services. At conclusion, each participant should be able to:

- Discuss recovering patient account balances in each type of bankruptcy.
- Understand the bankruptcy notice and whether to file a claim.
- Deal with a patient post-bankruptcy.
- Know the proper office procedures to avoid violation of the federal bankruptcy state law.

## Session 202

**Room 316 (Japanese translation)**

**Moderator: Herbert Schilder, D.D.S., Boston**

**FINISHING: The essence of exceptional endodontics**  
8:30 - 11:30 a.m.

**John D. West, D.D.S., M.S.D.**  
**Tacoma, Wash.**

All endodontists start treatment with the intention of experiencing a great case result. However, not all cases finish great. This program focuses on teaching guidelines for treating and finishing the complex endodontic patient. Dr. West offers an interactive three-hour update on the most current clinical concepts in endodontics. A key element that will be examined is establishing the vision and how to blend fundamental endodontic concepts with leading edge technologies. The objective is to consistently produce world-class endodontics in your finished cases. At conclusion, each participant should be able to:

- Establish a checklist for endodontic finishing.
- Learn emerging cleaning and shaping file design geometries and electric motor technologies.
- Capture the maximum cushion of warmed gutta-percha in a variety of seamless radicular shapes.
- Apply the restorative, periodontal and esthetic determinants of finishing.
- Master the guidelines to consistently produce world-class endodontics.

*In cooperation with the Japan Endodontic Association, Session 202 will be translated simultaneously into Japanese.*

This session will not be taped.

## Session 203

**Room 323**

**Moderator: Denis E. Simon, D.D.S., M.S., Baton Rouge, La.**

**Obstruction management**  
8:30 - 11:30 a.m.

**\*C. John Munce, D.D.S.**  
**Santa Barbara, Calif.**

This program is designed to illustrate new methods for obstruction bypass as well as obstruction removal. Strategic addition of structure, not only within coronal aspects, but deep within roots as well, provides for predictable bypass of obstructions of all kinds. Photographs, radiographs, graphic illustrations and clinical video will demonstrate how point-specific file stiffening provides flexural and torsional support to small-gauge files. This allows them literally to be driven past obstructions deep within the root and even beyond curvatures where other methods are ineffective and risky. Participants will also learn dead-soft adhesive tubular techniques for removal of metallic obstructions. At conclusion, each participant should be able to:

- Describe the instruments, materials and clinical steps involved in intracoronal and intraradicular additive techniques.
- Describe the methods for using additive techniques for file stiffening procedures to bypass calcific, metallic and other canal obstructions.
- Understand the instruments, materials and clinical steps involved in adhesive tubular techniques for removal of canal obstructions.

## Session 204

**Room 324**

**Moderator: Eva C. Dahl, D.D.S.**  
**Onalaska, Wis.**

**Prevention and management of rotary nickel-titanium instrument separation**  
8:30 - 11:15 a.m.

**Giuseppe Cantatore, D.D.S., D.M.S.**  
**Rome, Italy**

Nickel-titanium rotary instruments have made it possible to successfully treat even severely curved and calcified canals.

## Session 202



John D. West

## Session 203



C. John Munce

## Session 204



Giuseppe Cantatore

**Badges must be worn at all official AAE functions.**

*\*Speaker serves as a consultant and/or has a commercial interest in subject matter.*

## Session 205



James A.  
Wallace

### Japanese translation

In cooperation with the Japan Endodontic Association, the following presentations will be translated simultaneously into Japanese:

Thursday, March 30

**Session 105** - 2 p.m.

Contemporary obturation techniques: Applications and assessment

James L. Gutmann

Friday, March 31

**Session 202** - 8:30 a.m.

FINISHING: The essence of exceptional endodontics

John D. West

**Session 209** - 1 p.m.

Expanded clinical horizons on MTA

Noah Chivian  
Mahmoud Torabinejad

Saturday, April 1

**Session 302** - 8:30 a.m.

Vital pulp therapy: Microleakage/microbiology and toxicity

Charles F. Cox  
Harold R. Stanley



## Friday A.M., March 31

Unfortunately, improper use of these instruments can lead to higher frequency of instrument separation. Learn how to use them in a proper and safe way to minimize the risk of breakage. When separation occurs, it is necessary to determine if it is possible to remove the fragment and which technique is best. At conclusion, each participant should be able to:

- Describe the proper rotation speed, insertion pressure and movement for several nickel-titanium rotary instruments.
- Choose one of the new electric motors with autoreverse rotation and sophisticated torque control and use it properly.
- Minimize the risk of instrument blockage through effective cleaning and shaping sequences.
- Describe the technique to successfully remove, in selected cases, the separated instruments.

## Session 205

Room 325

**Moderator:** Roger R. Lacoste, D.M.D.  
New Bedford, Mass.

### Complications in surgery

**8:30 - 11:30 a.m.**

**James A. Wallace, D.D.S., M.D.S.**  
Pittsburgh

This session will describe periapical surgical procedures throughout the mouth, especially the maxillary sinus area, and will include the anatomy, endodontic surgical techniques and complications related to the maxillary sinus. You will learn how to identify indications, contraindications and techniques to prevent and treat surgical complications, as well as indications and placement of endosseous implants in endodontics to solve endodontic problems. At conclusion, each participant should be able to:

- Describe anatomy, endodontic surgical techniques and complications related to maxillary sinus.
- Describe surgical techniques to correct endodontic problems.
- Describe indications and placement of endosseous implants related to endodontic problems.
- Describe endodontic surgical procedures throughout the mouth, related

anatomy, and prevention and treatment of related complications.

## General Interest 3

Room 314

**Moderator:** George T. Goodis, D.D.S.  
Grosse Pointe, Mich.

### An endodontist's guide to CDT-3 and SNODENT Codes

**8:30 - 11:30 a.m.**

**Deborah S. Bishop, D.M.D.**  
Guntersville, Ala.

**Ronald I. Deblinger, D.M.D.**  
Clifton, N.J.

**Howard B. Fine, D.M.D.**  
Rochester, N.Y.

**Eric J. Herbranson, D.D.S., M.S.**  
San Leandro, Calif.

**Roger R. Lacoste, D.M.D.**  
New Bedford, Mass.

**William D. Powell, D.D.S., M.S.**  
Knoxville, Tenn.

**Hedley Rakusin, B.D.S., M.Sc., Dallas**  
**Charles L. Steffel, D.D.S., M.S.D.**

**Indianapolis**  
**Gary S. Yonemoto, D.D.S.**  
Honolulu

This course will explain how to use the new CDT-3 and SNODENT book and the codes to report diagnosis and treatment more accurately. A lengthy question and answer session, including a coding workshop, will follow the presentation. It is strongly recommended that auxiliary staff attend this course. At conclusion, each participant should be able to:

- Understand the development and use of CDT-3 and SNODENT Codes.
- Accurately report any variety of treatment in an endodontic office.
- Learn from a variety of scenarios how to handle problem cases.



**General Interest 4**

Room 317

Moderator: Timothy A. Grubb, D.D.S.,  
Snellville, Ga.

**Disconnect: Sources and implications of workplace miscommunication**

**8:30 - 11:30 a.m.**

Shawna M. Swanson, J.D.,  
Palo Alto, Calif.

Most miscommunication in the workplace stems from employees' differences in gender, race, age, religion and other "legally protected" characteristics. Such miscommunication often leads to business problems, including low employee morale and legal problems such as discrimination and harassment lawsuits. Learn about common sources of and the significant implications of miscommunication in the workplace. More specifically, this session will focus on the challenge of communicating clearly and effectively in our increasingly diverse workplaces. Hear about the employment policies and practices state and federal legislatures and courts obligate employers to develop and implement, as well as the often costly consequences of an employer's failure to comply with these obligations. At conclusion, each participant should be able to:

- Better understand the potential for miscommunication in the workplace based on differences in gender, race, age and religion.
- Appreciate the significant legal implications of such miscommunication.
- Understand the obligations courts and legislatures place on employers to prevent, investigate and remedy harassment claims.
- Return to the office with tools to (a) prevent miscommunication and (b) effectively address such miscommunication when it occurs.

**Staff Session 2**

Room 315

Moderator: Kenneth J. Spolnik,  
D.D.S., M.S.D.  
Indianapolis

**Everyone is a manager**

**8:30 - 11:30 a.m.**

Nick J. Minden, D.M.D., M.Ed., M.B.A.,  
Gainesville, Fla.

Participants will gain an understanding that management is a continuous process and is based on specific management principles, practices and styles that require each member of the office staff to be an active participant in the management of the dental office. At conclusion, each participant should be able to:

- Describe fundamental business principles and practices that made businesses like McDonalds, Ritz Carlton Co., L.L.C., Cracker Barrel Old Country Store and Walt Disney World successful and apply their secrets to dentistry.
- Define the term "management" and describe management systems.
- Develop specific office policies and procedures for your office.

**LAS 13** (*Limited Attendance Session*)

Room 318

**Residency over: What next?**

**8:30 - 9:45 a.m.**

\*W. Paul Radman, D.D.S., Dallas

Each resident has multiple options upon completion of residency — teaching, practice or military, for example. This course will allow you to analyze the various options available and determine which one best suits your needs. At conclusion, each participant should be able to:

- Evaluate benefits of a future in education or military.
- Understand various private practice arrangements and benefits of solo, small and large groups.
- Understand the difference between proprietorships, partnerships and professional corporations.
- Determine the best road to economic stability and freedom.

General Interest 4



Shawna M. Swanson

Staff Session 2



Nick J. Minden

**Limited Attendance Sessions (LAS)**

**Limited Seating**

**NO standing permitted**





## Friday A.M., March 31

### AAE Information Center

Visit the AAE Information Center in the exhibit hall of the Hawaii Convention Center for the latest information on:

- AAE Online
- New products
- *Colleagues for Excellence*
- 58th Annual Session in New Orleans
- American Board of Endodontics
- AAE Foundation

### Endodontic Educators Forum

Room 320

Moderator: Ronald R. Lemon, D.M.D.  
New Orleans

#### Enhancing relationships between schools and industry 8:30 - 11:30 a.m.

Joel B. Alexander, D.D.S.

San Antonio, Texas

Gerald N. Glickman, D.D.S., M.S.

Houston, Texas

Van T. Himel, D.D.S.

Memphis, Tenn.

This program, a combined meeting of the AAE and American Association of Dental Schools Endodontic Section, will explore how endodontic educators and corporate entities can work together in a mutually beneficial manner while maintaining an arm's length distance. A discussion with suppliers will address problems faced by educators in teaching new technology on limited budgets, outcomes to be expected and how to ethically obtain assistance from outside the educational programs. The AADS Endodontic Section will hold a business meeting at 11:30 a.m. following the discussion. At conclusion, each participant should be able to:

- Understand how dental suppliers can assist endodontic teaching programs.
- Discuss how education can work ethically with dental suppliers.
- Present models for conversion of advanced specialty education and undergraduate programs.
- Discuss outcome experiences of high-tech programs.
- Discuss funding sources for conversion.

### Poster Research Presentations

#### Poster Research Presentations Endodontist Section

Exhibit Hall (Level 1)

8 - 11 a.m.

##### PR 1

*Diffusion of the calcium ion in four calcium hydroxide materials*

Sara E. Arias, D.D.S., Bogota, Colombia

##### PR 2

*Sealing capacity of Super EBA, ProRoot, MTA, Diaket in the repair of root perforations*

Patricia G. Avellaneda, D.D.S.

Bogota, Colombia

##### PR 3

*Bone regeneration of the experimental endodontic-periodontic combined defects of dogs*

Seung-Ho Baek, D.D.S., Ph.D., & Hyunjung Ko, D.D.S., M.S.D., Seoul, South Korea

##### PR 4

*Compare the apical position and seal of 3M RelyX ARC using rotary condenser and Luminex Light Transmitting Posts against gutta-percha*

Ilya Benjamin, D.M.D., Gainesville, Fla.

##### PR 5

*Comparison of Thermafil as compared to lateral condensation obturation in general dental practice*

Suhail Bhatti, B.D.S., London, England

##### PR 6

*Effect of different endodontic materials on cellular fibroblasts*

Ricardo Caicedo, D.D.S., Bogota, Colombia

##### PR 7

*In vitro bacterial penetration in coronally unsealed teeth after endodontic treatment*

Antonio Cerutti, M.D., D.D.S., Vigevano, Italy, & Dino Re, M.D., D.D.S., Milan, Italy

##### PR 8

*Biocompatibility of bone cement, MTA, and Super-EBA in ferret canines*

Thom C. Dumsha, D.D.S., M.S., &

Mr. Gary Holt, Baltimore, Md.

##### PR 9

*Influence of torque on cyclic fatigue of NiTi files*

Gianluca Gambarini, D.D.S., Rome, Italy

##### PR 10

*In vitro antibacterial activity of endodontic irrigants in the elimination of*

*Enterococcus faecalis*

Brenda P.F.A. Gomes, D.D.S., M.Sc., Ph.D.

& Caio C.R. Ferraz, D.D.S., M.Sc., Ph.D.

Piracicaba, Brazil

**PR 11**

*Differential stimulation of CD4+ and CD8+ cells by caries bacteria*  
Chin-Lo Hahn, D.D.S., Ph.D., Richmond, Va.

**PR 12**

*Sealing ability of four endodontic sealers in apically perforated canals*  
Mian K. Iqbal, B.D.S., M.S., Philadelphia, Pa.

**PR 13**

*Effect of self-etching primer on apical sealing ability of resin-based root canal sealer*  
Sam-hee Kang, D.D.S., Seoul, South Korea

**PR 14**

*In vitro evaluation of new root canal resin sealer*  
Hiroki Kataoka, D.D.S., Ph.D., Tokyo

**PR 15**

*Flexibility of rectangular K-type file with side ratio continuously changed*  
Ichiroh Katsuumi, D.D.S., Tokyo

**PR 16**

*Canal preparation for a tight apical seal using various NiTi rotary instruments*  
Eui-Seong Kim, D.D.S., M.S.D.  
Inchon, South Korea

**PR 17**

*Bibliometric analysis of the endodontic literature on MEDLINE*  
Ms. Melanie Kim, Boston, Ma.

**PR 18**

*Cytotoxicity of intracanal bleaching agents in PDL cells in vitro*  
Yoshifumi Kinomoto, D.D.S., Ph.D.  
Osaka, Japan

**PR 19**

*CLSM and SEM evaluation of cutting chips produced by files*  
Kazuo Kitamura, D.D.S., Ph.D., Tokyo

**PR 20**

*Comparison of shaping ability of rotary NiTi instruments with different taper in simulated resin root canals*  
Ki-Yon Kum, D.D.S., M.S.D., Ph.D.  
Seoul, South Korea

**PR 21**

*Effect of obturation timing and thickness of mineral trioxide aggregate matrix on sealing ability*  
Kyung-In Kwak, D.D.S., Seoul, South Korea

**PR 22**

*Phase, compositional and morphological changes of human dentin after Nd:YAG laser treatment*  
Chun-Pin Lin, D.D.S., M.S., Ph.D.  
Taipei, Taiwan

**PR 23**

*Evidence-based systematic review of different root-end filling materials*  
Ms. Xia Lin, Boston, Ma.

**PR 24**

*Effect of enlarging root canal orifice on apical canal preparation*  
Munehiro Maeda, D.D.S., Ph.D., Tokyo

**PR 25**

*Root canal preparation by Er:YAG laser irradiation*  
Emi Matsuoka, D.D.S., Ph.D., & Koukichi Matsumoto, D.D.S., Ph.D., Tokyo

**PR 26**

*In vitro infrared thermographic assessment of root surface temperatures generated by the Thermafil Plus system*  
Neville J. McDonald, B.D.S., M.S., & Ali Behnia, D.M.D., M.S., Baltimore, Md.

**PR 27**

*Improved method for giving a maxillary nerve block*  
Julian Moiseiwitsch, B.D.S., Ph.D.  
Chapel Hill, N.C.

**PR 28**

*Effect of calcium sulfate on various osseous defects*  
Yuko Murashima, D.D.S., Tokyo

**PR 29**

*Tissue reaction of heat transfer during intracanal heat generation with System B*  
Kan-Ichi Nakagawa, D.D.S., Ph.D., Tokyo

**PR 30**

*Effects of MTX and G-CSF on experimental pulpal lesions*  
Hiroshi Nakamura, D.D.S., Ph.D.  
Nagoya, Japan

**Badges must be worn at all official AAE functions.**



## Friday A.M., March 31

Shuttle buses will be provided between the Hilton Hawaiian Village and the Convention Center according to the following schedule:

Thursday, March 30  
9:30 a.m. - 12 noon  
4 - 6:30 p.m.

Friday, March 31  
7 - 10 a.m.  
3:30 - 5:30 p.m.

Saturday, April 1  
7 - 10 a.m.  
1 - 3 p.m.

Departure and arrival at Tapa Tower at the Hilton

F  
R  
I  
D  
A  
Y

### PR 31

*Post-operative pain after root canal treatment in asymptomatic nonvital teeth*  
Kazuzo Okino, D.M.D., & Gustavo Meneghini, D.D.S., Sao Paulo, Brazil

### PR 32

*Forearm and hand muscle activity during endodontic instrumentation*  
Toshiko Ozawa, D.M.D., Ph.D., & Masako Nakano-Hasegawa, D.D.S., Ph.D.  
Yokohama, Japan

### PR 33

*Accuracy of Tri Auto ZX in locating apical foramen with rotary file*  
Jeong-Won Park, D.D.S., & Sungkyo Kim, D.D.S., Ph.D., Taegu, South Korea

### PR 34

*Effect of endodontic instrument taper on post retention*  
Mary T. Pettiette, D.D.S., Chapel Hill, N.C.

### PR 35

*Mechanical properties of NiTi rotary instruments*  
Giancarlo Pongione, D.D.S., Naples, Italy

### PR 36

*Tissue levels of matrix metalloproteinases in pulps and periapical lesions*  
Su-Jung Shin, D.D.S., & Sung-Sam Lim, D.D.S., M.S.D., Ph.D., Seoul, South Korea

### PR 37

*Histological and radiographic evaluation of periapical osseous defects healing by using two kinds of implants in dogs*  
Fabricio R. Teixeira, M.S., D.D.S., & Francisco J. Souza-Filho, D.D.S.  
Piracicaba, Brazil

### PR 38

*Pulpal and periapical inflammation of immuno-suppressed rat*  
Masahiro Yamasaki, D.D.S., Ph.D.  
Aicki, Japan

### PR 39

*Observation effectiveness of root canal with fiberscope and microscope*  
Yasushi Yamazaki, D.M.D., Ph.D.  
Yokohama, Japan

### PR 40

*SEM study on the bacterial adhesion to root canal dentin*  
Sung Eun Yang, D.D.S., & Kwang-Shik Bae, D.D.S., Ph.D., Seoul, South Korea

### PR 41

*Evidence-based review of antibiotic effectiveness after root canal treatment*  
Ms. Kathy Yeung, Boston, Ma.

### PR 42

*High detection rate of root canal orifices under a microscope*  
Takatomo Yoshioka, D.D.S. Ph.D., & Chihiro Kobayashi, D.D.S., Ph.D., Tokyo

## Table Clinics

Exhibit Hall (Level 1)

### Endodontist Section

8 - 11 a.m.

#### TC 1

*Rapid volumetric visualization of simulated root canals using quantitative fluorescence microscopy*  
Ms. Lilly Chen  
Harvard School of Dental Medicine

#### TC 2

*Dental hygienist utilization in endodontic practice*  
Jess T. Ellis, B.D.S., Anchorage, Alaska

#### TC 3

*Trephination: Adjunctive treatment for acute periapical pain*  
Brian M. Henry, D.M.D., M.S., & John G. Fraser, B.D.S., M.D.S.  
West Vancouver, BC, Canada

#### TC 4

*Extraoral approaches to maxillary and mandibular anesthesia*  
James L. Jostes, D.D.S., M.S.  
Iowa City, Iowa

#### TC 5

*Fast and efficient method for removing crowns, posts and obstructions from root canal treated teeth*  
Kazuko Kawaguchi, D.D.S., Ph.D., & Nguyen Thanh Nguyen, D.D.S.  
Shizuoka, Japan, and San Francisco



**TC 6**

*Split Tooth: Conservative management*  
Hiran Perinpanayagam, B.D.S.  
Univ. of Iowa

**TC 7**

*PS System: An easy way to get to the apex*  
Franklin Pineda, D.D.S.  
Mexico City

**TC 8**

*Treatment alternatives for split teeth*  
Eric M. Rivera, D.D.S., M.S.  
Iowa City, Iowa

**TC 9**

*MTA or calcium hydroxide: Indications of each for best results*  
Stephane Simon, D.D.S., & Jean-Ives Cochet, D.D.S.  
Louviers and Paris, France

**TC 10**

*Flare preparation with the ProFile system and the ED Yamada Bur*  
Kuniaki Yamada, D.D.S.  
Kyoto, Japan

**TC 11**

*Use of three-dimensional images in endodontics*  
B. Harvey Wiener, D.D.S., M.Sc.D., & Francisco Eraso, D.D.S., M.S.  
Fort Lauderdale, Fla.

**AADS Endodontic Section Meeting**

Room 320

**11:30 a.m. - 12 noon**

**Edgar D. Coolidge Luncheon**

Hawaii Convention Center  
Ballrooms B & C (by ticket only)  
Moderator: Fredric Goodman,  
D.D.S., New York

**11:30 a.m. - 12:45 p.m.**

**Award recipient:**  
**James C. McGraw, D.D.S.**  
Bellevue, Wash.

The Coolidge Award is presented to a member who has actively participated in the AAE during his or her professional life, displaying outstanding leadership and exemplary dedication to dentistry and endodontics.

**Afternoon Sessions**

**Session 206**

Room 311

Moderator: **Blair T. Johnson, D.D.S.**  
Eau Claire, Wis.

**Treatment of endodontic infections**

**1 - 4 p.m.**

**J. Craig Baumgartner, D.D.S., M.S., Ph.D., Portland, Ore.**

Each participant should recognize the procedures for successful endodontic treatment. This presentation will explore the disease process involved in endodontic infections and provide the necessary information to develop a sound rationale for effective management of endodontic infections. At conclusion, each participant should be able to:

- Describe the predominant microorganisms and portals of entry for organisms into the pulp and periradicular tissues.
- Discuss the rationale for debridement of the root canal system and surgical management of endodontic abscesses/cellulitis.
- Describe a hierarchy of antimicrobials for the treatment of endodontic infections and discuss appropriate prophylactic use of antimicrobials.

**Session 207**

Room 312

Moderator: **Carl W. Newton, D.D.S., M.S.D., Indianapolis**

**The relationship between bacteria and chronic systemic disease: Let's look at the evidence**

**1 - 4 p.m.**

**Jeffrey W. Hutter, D.M.D., M.Ed.**  
Boston

The role pathogens may play in the etiology of what were once thought to be noninfectious chronic illnesses is being actively questioned and studied by medical and dental researchers. This informative presentation will discuss the evidence pertaining to the relationship and possible link between bacteria and

Edgar D. Coolidge  
Award Recipient



James C.  
McGraw

**Session 206**



J. Craig  
Baumgartner

**Session 207**



Jeffrey W.  
Hutter

**Need a Break?**

**Complimentary coffee will be provided in the exhibit hall at the following times:**

**Thursday .... 10:30 a.m.**  
**Thursday ..... 2:45 p.m.**  
**Friday ..... 10:30 a.m.**  
**Friday ..... 2:30 p.m.**  
**Saturday ..... 10:30 a.m.**



## Friday P.M., March 31

### Session 208



Martin Trope

### Session 209



Noah Chivian



Mahmoud Torabinejad

### Session 210



Andre K. Mickel

chronic systemic disease. At conclusion, each participant should be able to:

- Understand the role that pathogens may play in supposedly noninfectious chronic diseases.
- Describe the relationship between periodontal disease and cardiovascular disease, cerebrovascular disease and preterm low birth weight.
- Describe the relationship between endodontic disease and chronic systemic disease and the role that subsequent endodontic treatment may play in a patient's overall health.

### Session 208

Room 314

Moderator: Don H. Pratten, D.M.D.  
Issaquah, Wash.

#### Resorptions: Etiology, treatment and prognosis

1 - 4 p.m.

Martin Trope, B.D.S., D.M.D.  
Chapel Hill, N.C.

This program will present a perspective of etiological factors of root resorption that includes classification of root resorption, etiological factors and appropriate treatment. By understanding the etiology of the disease treatment, protocols can be used to prevent or treat these etiological factors and assist in providing a reasonably accurate prognosis to the patient. At conclusion, each participant should be able to:

- Describe the classification of root resorption.
- Identify the etiological factors for each type of resorption.
- Determine appropriate treatment directed at the prevention or treatment of these factors.
- Describe the prognosis based on the available evidence.

### Session 209

Room 316 (Japanese translation)

Moderator: Richard C. Burns, D.D.S.  
San Mateo, Calif.

#### Expanded clinical horizons of MTA

1 - 4 p.m.

Noah Chivian, D.D.S.  
West Orange, N.J.

Mahmoud Torabinejad, D.M.D., M.S.D.,  
Ph.D., Loma Linda, Calif.

This presentation will explore the clinical applications of MTA in endodontics. Attendees will gain an understanding of the physical and chemical characteristics, when to use and how to use MTA. At conclusion, each participant should be able to:

- Describe the physical and chemical characteristics of MTA.
- Determine when to use MTA.
- Understand how to use MTA.

*In cooperation with the Japan Endodontic Association, Session 209 will be translated simultaneously into Japanese.*

### Session 210

Room 318

Moderator: Keith V. Krell, D.D.S.,  
M.S., M.A.  
W. Des Moines, Iowa

#### Endodontic emergency: Stopping the pain

1 - 4 p.m.

Andre K. Mickel, D.D.S., M.S.D.  
Cleveland, Ohio

Each participant should be able to recognize the source of the pain resulting in an emergency office visit and be able to quickly and effectively make the patient comfortable. Additionally, each participant will learn how to better prevent interappointment flare-ups and postoperative pain. At conclusion, each participant should be able to:

- Predetermine which patients are more likely to have post-operative pain and how to decrease this likelihood.
- Understand a treatment regimen for "sodium hypochlorite accidents."



- Perform the minimal emergency treatment for those schedule-disrupting emergency patients in pain.
- Describe some of the methods of anesthetizing hot teeth.
- Use effective analgesic and nonanalgesic regimens to help keep our patients happy and comfortable.

## Session 211

Room 323

Moderator: **Mark A. Odom, D.D.S.**  
Cary, N.C.

### Orthograde and retrograde retreatment: Raise your sights to the highest standard

1 - 4 p.m.

**Shimon Friedman, D.M.D., Toronto**

This program will present a strategized approach to, and specific techniques for, the management of endodontic failures. The focus will be on root canal retreatment performed either nonsurgically (orthograde retreatment) or surgically (retrograde retreatment). At conclusion, each participant should be able to:

- Understand biologic rationale for management of endodontic failures.
- Know the guidelines for selection of nonsurgical or surgical treatment.
- Understand techniques for management of crowns and bridges, posts and all types of root filling materials.
- Understand techniques for retrograde retreatment beyond the conventional retrograde filling.

## General Interest 5

Room 317

Moderator: **Sandra Madison, D.D.S., M.S., Asheville, N.C.**

### Passages: The transition from slides to computer presentations

1 - 4 p.m.

**Eric J. Herbranson, D.D.S., M.S.**

San Leandro, Calif.

**Richard A. Rubinstein, D.D.S.**

Farmington Hills, Mich.

Are you ready to develop an electronic presentation? We will demonstrate how

the use of computer technology can increase the efficiency and interest in presentations to other dental professionals. At conclusion, each participant should be able to:

- Comprehend the significant difference between the traditional slide presentation and the more powerful computer presentation.
- Illustrate the rules of thumb of effective presentations and how they apply to electronic presentations.
- Build his/her own electronic presentation.
- Discuss the technical issues involving the use of still images, radiographs and video in the electronic presentation.

## General Interest 6

Room 325

Moderator: **Kathryn A. Jurosky, D.D.S., M.S.**  
Redwood City, Calif.

### How to survive your hospitalization without "pulling teeth"

1 - 4 p.m.

**Theodore Tyberg, M.D., New York**

Understand your options as a hospital patient and learn how to empower yourself prior to a hospital stay. This session will provide important information on choosing your doctor and the hospital, how things work in the hospital environment, what options are available to you as the patient and when to be skeptical. At conclusion, each participant should be able to:

- Choose the right doctor and hospital.
- Understand what options you have and how to research them.
- Know when to be skeptical.

## Session 211



Shimon  
Friedman

## General Interest 5



Eric J.  
Herbranson



Richard A.  
Rubinstein

## General Interest 6



Theodore  
Tyberg



## Friday P.M., March 31

### Staff Session 3



Debra Engelhardt

### Faculty Development Seminar



S. Brent Dove

### Limited Attendance Sessions (LAS)

Limited Seating

NO standing permitted

*\*Speaker serves as a consultant and/or has a commercial interest in subject matter.*

### Staff Session 3

Room 315

Moderator: Deborah S. Bishop,  
D.M.D., Huntsville, Ala.

#### Patient care checklist – office systems check-up

1 - 4 p.m.

**Debra Engelhardt, Charlotte, N.C.**

It is one thing to have the knowledge, skills and expertise to provide ultimate care for your patients. It is another thing to effectively apply time and talents to achieve maximum impact. Evaluate and enhance the effectiveness of your office systems for you, your patients and your referrals. Specific tools and implementation steps will be provided. At conclusion, each participant should be able to:

- Utilize technology more effectively.
- Better control accounts receivable.
- Describe the various options for practice development.

### LAS 14 (Limited Attendance Session)

Room 324

#### Is there truth in diagnostic tests?

1 - 2:15 p.m.

**Asgeir Sigurdsson, D.D.S., M.S.**

Chapel Hill, N.C.

This presentation will review the neuromechanisms responsible for the most common symptoms associated with pulpitis and periapical pathosis. You will learn how a good understanding of those mechanisms can help with diagnosis of pulpal and/or periapical pathosis and how most commonly used diagnostic tests interact with these neuromechanisms. At conclusion, each participant should be able to:

- Describe the main neurological mechanisms responsible for patients' pulpal and/or periapical symptoms.
- Better understand how patients' symptoms can sometimes lead to incorrect pulpal diagnosis.
- Understand the usefulness and shortcomings of the most commonly used diagnostic tests.

### LAS 15 (Limited Attendance Session)

Room 328

#### Thirty-five years' use of calcium hydroxide

1 - 2:15 p.m.

**John D. Hartness, D.D.S.**

Rocky Mount, N.C.

This clinical presentation covers over 35 years' use of calcium hydroxide in traumatized teeth. Learn how to evaluate the extent of trauma, the method of treatment of crown fractures, intrusions, luxations, root fractures, avulsions, apexifications and root closures. At conclusion, each participant should be able to:

- Diagnose and treat traumatic injuries.
- Determine when to start treatment.
- Determine if there is a solid calcium hydroxide pack.
- Prepare the patient with the prognosis and what to expect from treatment.
- Prepare the patient with reasonable rationale of treatment, provided the tooth is lost.

### Faculty Development Seminar

Room 320

Moderator: Scott R. Makins, D.D.S.  
College Station, Texas

#### Interfacing academic research with private industry and government

1 - 4 p.m.

**\*S. Brent Dove, D.D.S., M.S.**

San Antonio

This session will cover the basic concepts of intellectual property, research agreements, confidentiality and methods for developing research relationships with private industry and governmental entities. At conclusion, each participant should be able to:

- Understand the concept of intellectual property including patents, copyrights, trade secrets and other legal matters regarding research activities.
- Describe the ethical issues related to the research and "academic freedom."
- Develop research relationships with private industry and government.



## Oral Research Presentations VI

Room 327

Moderator: Robert J. Frank, D.D.S.  
Glendora, Calif.

### Graduate Student Section

**2 p.m.**

*Immunohistochemical detection of IL-8 expression by human odontoblasts in vitro*  
Andrew L. Rudd, D.D.S. (presenter)  
L. Levin, Univ. of North Carolina

**2:15 p.m.**

*In vitro microscopic analysis of apical 3mm preparation with GT, LightSpeed and ProFile*  
Jean H. Kang, D.D.S. (presenter)  
S.M. Neary, P. Sumaza & Y.T. Jou  
Univ. of Pennsylvania

**2:30 p.m.**

*Evaluation of residual antimicrobial effects of hydraulically placed calcium hydroxide*  
Nivine Y. El-Refai, D.D.S. (presenter)  
A.K. Mickel, Case Western Reserve Univ.

**2:45 p.m.**

*Effect of ultrasonic vibration and various sealer and cement combinations on titanium post removal*  
Brian E. Bergeron, D.M.D. (presenter)  
D.F. Murchison, W.G. Schindler & W.A. Walker III, Wilford Hall Medical Center & Univ. of Texas at San Antonio

**3 p.m. - Break**

**3:15 p.m.**

*Cytotoxicity of perforation repair materials to human periodontal ligament cells in vitro*  
Bradford R. Johnson, D.D.S. (presenter)  
A.L. Aviles, N.A. Remeikis, J. Daniel & S. Bentkover, Univ. of Illinois at Chicago

**3:30 p.m.**

*Molecular biological characterization of periradicular lesions in an HIV/AIDS model*  
Debora F. Levine, D.D.S. (presenter)  
J.L. Gutmann, D.E. Witherspoon, A.M. Iacopino & J.T. Newman  
Baylor College of Dentistry

**3:45 p.m.**

*Role of interleukin-6 in the pathogenesis of periradicular bone destruction in mice*  
Khalid A. Balto, B.D.S. (presenter)  
H. Sasaki & P. Stashenko, Harvard School of Dental Medicine & Forsyth Institute

**4 p.m.**

*Clinical and radiographic study of canal morphology in mandibular premolars*  
Kevin Edwards, D.D.S. (presenter)  
B. Karabucak & Jeffrey Chen  
Univ. of Pennsylvania

## Oral Research Presentations VII

Room 326

Moderator: Darrell W. Zenk, D.D.S.,  
M.S.D.  
Inver Grove Hts., Minn.

### Endodontist Section

**2 p.m.**

*Evasive second mesiobuccal canals in maxillary molars*  
Mehmet O. Gorduysus, D.D.S., Ph.D. (presenter), S. Friedman & M. Gorduysus  
Univ. of Toronto

**2:15 p.m.**

*Topical application of capsaicin over the dentin and the pulp exposure as an adjunct to local anesthetics*  
Abdullah Soluti, D.D.S. (presenter)  
M. Monsef & M. Tabrizzadeh  
Mashad Univ., Iran

**2:30 p.m.**

*Microscopic diagnosis and treatment of a mandibular second premolar with four canals*  
Khalid S. Al Fouzan, B.D.S. (presenter)  
Riyadh, Saudi Arabia

**2:45 p.m.**

*In vitro study of the effect of apical patency on the apical seal*  
Mehdi Monsef, D.M.D., M.S. (presenter)  
Mashad Univ., Iran

**3 p.m.**

*Remaining dentin thickness in mesio buccal root after cervical flaring*  
Salsabyl Ibrahim, D.D.S., M.S.D. (presenter)  
N.E. Sabet & M. Dahabah  
Cairo University, Egypt

**Badges must be worn at all official AAE functions.**



**Need a Break?**

**Complimentary coffee will be provided in the exhibit hall at the following times:**

**Thursday .... 10:30 a.m.**  
**Thursday ..... 2:45 p.m.**  
**Friday ..... 10:30 a.m.**  
**Friday ..... 2:30 p.m.**  
**Saturday ..... 10:30 a.m.**

**Friday P.M./Saturday A.M., April 1***Oral Research Presentations***3:15 p.m.**

*Retrospective study on wing design composite fillings for endodontically treated teeth*

Paolo Borelli, D.D.S. (presenter)  
 P. Alibrandi, Rome, Italy

**3:30 p.m.**

*Reliability of electronic apex locators to determine the working length under moisture conditions*

Benjamin M. Briseno, D.D.S. (presenter)  
 P. Hahnel & B. Willershausen  
 Johannes Gutenberg Univ., Germany

**3:45 p.m.**

*Impact of image compression on detection/diagnosis of periapical lesions*

Francisco Eraso, D.D.S., M.Sc.D. (presenter)  
 B.H. Wiener, M. Analoui & S. Krishnamurthy, Nova Southeastern Univ. & Indiana Univ.

**4 p.m.**

*Resistance to corrosion of rotary nickel titanium endodontic files*

Martha Siragusa, D.D.S. (presenter)  
 G. Racciatti  
 National Univ. of Rosario, Argentina

**4:15 p.m.**

*Systemic use of amitriptyline in pain control of teeth which do not respond adequately to local anesthesia*

Abdullah Soluti, D.D.S. (presenter)  
 M. Monsef & M. Taromsari  
 Mashad Univ., Iran

**4:30 p.m.**

*Application of three-dimensional computerized tomograph for tooth transplantation*

Seung-Jong Lee, D.D.S., M.S. (presenter)  
 K.Y. Kum & I. Jung, Yonsei Univ., Korea

**4:45 p.m.**

*Efficacy of Nd-YAG laser irradiation in removing smear layer*

Wan-Hong Lan, D.D.S., D.D.Sc. (presenter)  
 M.C. Tsai & C.P. Lin, National Taiwan Univ.

**Saturday, April 1****Morning Sessions****Continental Breakfast**

Exhibit Hall (Level 1)  
 (by ticket only)

**7:30 - 8:30 a.m.**

**Exhibits**

Exhibit Hall (Level 1)  
**7:30 a.m. - 1 p.m.**

**Poster Research Presentations**

Kamehameha Halls II and III

**Graduate Student Section**

**8 - 11:30 a.m.**

**PR 43**

*Microscopic examination of the interface of separated GT instruments in extracted teeth*

Leandro R. Britto, D.D.S., Univ. of Florida

**PR 44**

*Engineering dental pulp*

Brian J. Buurma, D.D.S., Univ. of Michigan

**PR 45**

*Sonics versus ultrasonics in effectiveness of bacterial reduction and release*

Sami R. Chogle, B.D.S.  
 Case Western Reserve Univ.

**PR 46**

*Fluorescent microscopy in evaluating bacterial inhibition by calcium hydroxide medicaments*

Catherine Erwin Connor, D.D.S.  
 West Virginia Univ.

**PR 47**

*Effect of pH on the set of mineral trioxide aggregate*

Matthew C. Davis, D.D.S., Univ. of Iowa

**PR 48**

*Efficacy of endodontic microscopy: A comprehensive survey*

Todd V. Ester, D.D.S., Univ. of Michigan



**PR 49**

*Comparison of two direct digital radiography sensor systems in conventional endodontics: An in vitro study*  
Saju George, D.M.D., Univ. of Pennsylvania

**PR 50**

*Pulpal inflammation induced by LPS in ferrets*  
Patricia Gonzalez, D.D.S.  
Univ. of North Carolina

**PR 51**

*Effect of calcium hydroxide on apical leakage of root-filled teeth with post space preparation*  
Alicia Gray, D.M.D., Univ. of Medicine & Dentistry of New Jersey

**PR 52**

*Comparison of sealer radiopacity by measuring optical density*  
Karla A. Ham, D.D.S., &  
Candice Trasatti, D.D.S.  
Baylor College of Dentistry

**PR 53**

*Microbiological analysis of obturated teeth with persistent periapical lesions*  
Henry H. Hancock III, D.D.S.  
Univ. of North Carolina

**PR 54**

*In vitro dye leakage study of three obturation techniques*  
Yu-Heng Ling, D.D.S.  
Case Western Reserve Univ.

**PR 55**

*Rapid, in-office culturing system for antibiotic selection*  
William K. Morgan, D.D.S.  
Univ. of Louisville

**PR 56**

*Comparison of radiopacities of various endodontic obturating materials using digital analysis*  
Bruce E. Newcomb, D.D.S.  
Univ. of Louisville

**PR 57**

*Effects of smear layer on lateral and vertical condensation techniques*  
Nguyen Tuong Nguyen, D.D.S.  
Case Western Reserve Univ.

**PR 58**

*TNF signaling is critical in mediating host response to infection caused by P. gingivalis*  
Malekshah Oskoui, D.M.D., Boston Univ.

**PR 59**

*In vitro longitudinal assessment of coronal discoloration from endodontic sealers*  
Joseph R. Parsons, D.D.S., Univ. of Iowa

**PR 60**

*Adhesion-mediated phosphotyrosine signaling in osteoporotic osteoblasts*  
Hiran Perinpanayagam, B.D.S., M.S.  
Univ. of Iowa

**PR 61**

*Microleakage study of amalgam, amalgam with bonding Super EPA used as retrograde*  
Bijan Pourjamasb, D.D.S.  
Case Western Reserve Univ.

**PR 62**

*Cost benefit analysis comparing digital radiography and conventional film radiography*  
William H. Rousseau, D.M.D.  
Univ. of Louisville

**PR 63**

*Utilization of endodontic services by a Medicaid population*  
Suhaila S. Shariff, D.M.D., M.P.H.  
Univ. of Iowa

**PR 64**

*Comparison of the apical sealing ability of two Kerr sealers*  
Mariah Shojaei, D.M.D.  
Case Western Reserve Univ.

**PR 65**

*Comparing amalgam and Super EBA as retrograde filling materials*  
Peyman Vaziri, D.D.S.  
Case Western Reserve Univ.

**PR 66**

*Delivery of Doxycycline gel (Atridox) to apical rarefactions in cats*  
Earl D. Walker, D.M.D., Univ. of Louisville

**PR 67**

*Efficacy of Laser Doppler Flowmetry in the diagnosis of revascularization of reimplanted dogs teeth*  
Kallaya Yanpiset, D.D.S.  
Univ. of North Carolina

**AAE Information Center**

Visit the AAE Information Center in the exhibit hall at the Hawaii Convention Center for the latest information on:

- AAE Online
- New products
- *Colleagues for Excellence*
- 58th Annual Session in New Orleans
- American Board of Endodontics
- AAE Foundation



**Saturday A.M., April 1**

## Visit the Exhibits

at the  
Convention Center  
to see the latest in  
products and services  
and to thank the  
exhibitors who help  
defray part of your  
annual session cost.

## Table Clinics

Exhibit Hall (Level 1)

### Graduate Student Section

**8 - 11:30 a.m.**

#### TC 12

*Characterization of an antibiotic impregnated delivery system as an intracanal medicament in endodontic therapy*

Mario E. Abdennour, D.M.D., &  
Michele A. Scrima, D.M.D.  
Harvard School of Dental Medicine

#### TC 13

*Calcific metamorphosis: To treat or not to treat, that is the question*

Faisal A. Amir, B.D.S., &  
Paul G. Satchell, D.D.S.  
Baylor College of Dentistry

#### TC 14

*Creative treatment of a complicated crown fracture*

Aneet S. Bal, D.D.S.  
Albert Einstein Medical Center

#### TC 15

*Endodontic failure: Closing the gap*

Kweli K. Carson, D.D.S., Univ. of Iowa

#### TC 16

*The ortho band in endodontics: A new look at an old concept*

Robert D. Chavez, D.D.S., &  
Charles P. Kass, D.D.S.  
University of Texas at Houston

#### TC 17

*Association between orthognathic surgery and pulpal health of adjacent teeth*

Joy W. Cope, D.D.S., & Rita F. Ne, D.D.S.  
Baylor College of Dentistry

#### TC 18

*Prevention of erroneous electronic root canal measurements: Clinical tips*

Guido E. Costa, D.M.D., & Sevak Adamian, D.D.S., Naval Dental School

#### TC 19

*Prevention of separated rotary instruments in the pulp canal system*

Mercedes S. Dominguez, D.D.S., &  
Mohammed N. Mohammed, D.D.S.  
Baylor College of Dentistry

#### TC 20

*An alternative to apexification*  
Mohamed I. Fayad, D.D.S., M.S.  
University of Illinois at Chicago

#### TC 21

*C-shaped canals in the mandibular second molar*

Michael B. Feintuch, D.M.D.  
New York Univ. and Manhattan VA Medical Center

#### TC 22

*Role of autotransplantation in treatment planning*

Sue Hoch, D.D.S.  
Albert Einstein Medical Center

#### TC 23

*Pulse oximetry: Potential applications in pulp vitality*

Vincent R. Jones, D.D.S., Univ. of Iowa

#### TC 24

*Microbial status of canals obturated with iodoform containing gutta-percha and sealer*

Bilal S. Khan, D.M.D.  
Albert Einstein Medical Center

#### TC 25

*Intraosseous anesthesia systems: What's new*

Stuart O. Miller, D.D.S., &  
Terry D. Webb, D.D.S., Naval Dental School

#### TC 26

*3-D x-ray imaging*

Ricardo D. Morant, D.M.D.  
Univ. of Louisville

#### TC 27

*Remaining dentin after post preparation with the Flexi Post system*

Spencer C. Saint-Cyr, D.M.D.  
Nova Southeastern Univ.

#### TC 28

*Mineral trioxide aggregate used as an obturating material for a patient with latex allergy*

Mary L. Stewart, D.D.S., & David M. Kenée, D.D.S., Naval Dental School



**TC 29**

*Diagnosis, classification and treatment of cracked teeth*  
 Adam P. Strimer, D.M.D., &  
 Richard F. Urbanczyk, D.D.S.  
 Naval Dental School

**TC 30**

*Unusual etiologies for pulp and periradicular pathosis*  
 Vladimir Tismenetskiy, D.D.S.  
 Albert Einstein Medical Center

**TC 31**

*Removal of cast restorations for endodontic therapy*  
 Carol Diener Weber, D.D.S., & David Neil  
 Wilson, D.D.S., Naval Dental School

**Session 300**

**Room 311**

**Moderator: Bruce H. Seidberg, D.D.S., M.Sc.D., J.D.**  
 Syracuse, N.Y.

**Anesthesia**

**8:30 - 11:30 a.m.**

**Stanley F. Malamed, D.D.S., West Hills, Calif.**

Each participant should be able to understand how local anesthetic drugs differ clinically, how to make them more effective in endodontics and become familiar with complications. At conclusion, each participant should be able to:

- Be familiar with currently available local anesthetic formulations and their clinical differences.
- Know why local anesthetics fail in endodontics.
- Learn how we can make local anesthetics more effective.
- Discuss local anesthetic allergy and overdose.

**Session 301**

**Room 312**

**Moderator: Augustyne V. Hill, D.D.S., Nashville, Tenn.**

**Dueling retreatments: Orthograde vs. retrograde**  
**8:30 - 11:30 a.m.**

**\*Robert J. Rosenberg, D.D.S., D.Sc.D. Greenbrae, Calif.**

**Richard A. Rubinstein, D.D.S. Farmington Hills, Mich.**

This program will take a candid look at the indications and treatment modalities for surgical and nonsurgical retreatment of endodontic failures. It will be presented in a point/counterpoint format and will include audience participation. At conclusion, each participant should be able to:

- Understand the indications for conventional and surgical retreatment.
- Understand the reasons for avoiding conventional or surgical retreatment.
- Be familiar with armamentarium and techniques used in both conventional and surgical retreatment.
- Be familiar with long-term clinical research findings with regard to endodontic microsurgery.

**Session 302**

**Room 316 (Japanese translation)**

**Moderator: Harold E. Goodis, D.D.S. San Francisco, Calif.**

**The role of direct pulp capping procedures and advances in pulp biology - pathology (toxicity) and/or microbiology**  
**8:30 - 11:30 a.m.**

**Charles F. Cox, D.M.D. Birmingham, Ala.**

**\*Harold R. Stanley, D.D.S., M.S. Ormond-By-The-Sea, Fla.**

Each attendee should be able to appreciate how success and failure in vital pulp capping (VPC) therapy is a combination of degree of biocompatibility (toxicity and its range of histopathological lesions) and the contribution of microorganisms which accentuates the problem. Various biomaterials will be examined with their

**Session 300**



Stanley F. Malamed

**Session 301**



Robert J. Rosenberg



Richard A. Rubinstein

**Session 302**



Charles F. Cox



Harold R. Stanley

*\*Speaker serves as a consultant and/or has a commercial interest in subject matter.*



## Saturday A.M., April 1

### Session 303



Steven A. Cohn

### Session 304



Gerald N. Glickman

**Audio and video  
taping are allowed  
only with  
permission of  
the speaker.**

associated pulpal responses with results of long term microleakage and recurrent decay. At conclusion, each participant should be able to:

- Understand why success and failure occur in VPC; how different calcium hydroxide products and bonding systems affect pulp tissue.
- Appreciate the rate and depth of carious organism invasion into dentin and at what point significant pulp pathology occurs.
- Understand the relationship between microorganisms in the presence of microleakage and the persistence of a high percentage of normal pulps.
- Understand a new concept of dentin bridge formation where the capping agent itself becomes the bridge without diminishing the bulk size of the remaining pulp tissue.
- Discuss diagnostic differentiation between reversible and irreversible pulp pathology and subsequent pulpal treatments: indirect/direct pulp capping, pulpotomy or biomechanical instrumentation.

*In cooperation with the Japan Endodontic Association, Session 302 will be translated simultaneously into Japanese.*

### Session 303

Room 318

Moderator: Robert W. Hawkinson Jr.,  
D.D.S., M.S., Wheaton, Ill.

#### Things that work: A synopsis of 25 years of clinical practice

8:30 - 10 a.m.

Steven A. Cohn, D.D.S.  
Sydney, Australia

Each participant should be able to identify significant literature that has had a direct impact on clinical treatment. At conclusion, each participant should be able to:

- Discuss various categories of endodontic treatment and the literature that has influenced the clinical treatment of these conditions.
- Describe the clinical techniques used to achieve the treatment outcomes within each category.
- Evaluate those techniques for inclusion in their clinical practice.

### Session 304

Room 323

Moderator: Asgeir Sigurdsson,  
D.D.S., M.S.  
Chapel Hill, N.C.

#### Hybridized obturation techniques: Rationale and clinical evidence

8:30 - 10:30 a.m.

Gerald N. Glickman, D.D.S., M.S.  
Houston

In the new millennium, clinicians will be continually faced with complex cases with the ultimate goal of delivering high quality endodontic care. Depending upon the degree of complexity, a single sealing/obturation technique per tooth or even per canal may not fulfill the obturation criteria espoused in AAE's *Appropriateness of Care and Quality Assurance Guidelines*. Due to aberrant canal systems, resorptive defects and myriad other reasons, including the advent of new technology, hybridized sealing/filling methods may be more effective and more efficient for achieving clinical excellence. This program is designed to illustrate creative ways to seal/obturate root canal systems in three dimensions by capitalizing on the positive attributes of cold and warm gutta-percha methods and other biomaterials for various types of clinical cases. At conclusion, each participant should be able to:

- Define hybridized sealing/obturation techniques.
- Understand the rationale for a hybridized sealing/obturation modality for a given case.
- Cite the positive attributes of various sealing/obturation systems.
- List the types of defects, canal systems and clinical cases amenable to hybridized sealing/obturation techniques.
- Select appropriate combinations of sealing/obturation methods for specific clinical scenarios.
- Use the "hybridization concept" in clinical practice.



## General Interest 7

Room 317

Moderator: **Michael S. Bond, D.D.S.**  
Baton Rouge, Louisiana

### Risk management for the endodontist

8:30 - 11:30 a.m.

**Milton Palat, D.D.S., J.D.**  
Yardley, Pa.

Using the information and materials provided, each office will be able to conduct an audit of the risk management factors in place, isolate any weaknesses and correct them. Presentation will use endodontic malpractice suits as a springboard for understanding legal aspects of practice. At conclusion, each participant should be able to:

- Determine high risk areas—the standard of care.
- Understand informed consent—avoiding TMD claims.
- Evaluate record keeping—procedural accidents and complications—billing errors.
- Know the “Ten Commandments” for a stress-free endodontic practice.
- Be familiar with endodontic interrogatories—inside a lawsuit.
- Understand how to end treatment properly.

## Staff Session 4

Room 315

Moderator: **Daniel K. Price, D.D.S.**  
Nashville, Tenn.

### What is service all about?

8:30 - 11:30 a.m.

**Nick J. Minden, D.M.D., M.Ed., M.B.A.**  
Gainesville, Fla.

Providing service to people is an integral part of delivering specialized health care and the “perception” of that service is just as important as the reality of what you do. At conclusion, each participant should be able to:

- Describe the importance of both the referring general dentist and the patient to the endodontic practice.
- Define service and its basic principles.
- Develop strategies for delivering better service to both referring dentists and patients in the endodontic practice.

## LAS 16 (Limited Attendance Session)

Room 326

### Excellence and simplification of one-visit endodontics

8:30 - 9:45 a.m.

**Ruy Hizatugu, D.D.S.**  
Sao Paulo, Brazil

**Eduardo S. Kado, D.M.D.**  
Sao Paulo, Brazil

Despite many efforts of respected centers, whether or not endodontic therapy in nonvital teeth should be performed in one visit remains a rather controversial issue. The purpose of this presentation is to discuss with the audience one-visit endodontic treatment, based on modern biological concepts and its clinical outcome. At conclusion, each participant should be able to:

- Understand the role of infection in pulpal and periapical diseases.
- Recognize the pathway of the infection.
- Perform the technique described.
- Predict the repair after one-visit endodontic treatment of apical periodontitis.

## LAS 17 (Limited Attendance Session)

Room 328

### Simple miracles in and around endodontics!

8:30 - 9:45 a.m.

**Guido Aesaert, D.D.S.**  
Aalter, Belgium

Endodontic treatment, though it plays a major role, is only a part of total dental treatment. Working closely with other fields of dentistry will be highlighted. At conclusion, each participant should be able to:

- Know the deciding factors to determine when and how to treat vertical root fractures.
- Make a decision for immediate single tooth implantation.
- Have a critical view on the choice of root canal instruments and obturation techniques.
- Improve the clinical situation for tooth restoration after root canal treatment.

## General Interest 7



Milton Palat

## Staff Session 4



Nick J. Minden

**Limited Attendance Sessions (LAS)**

**Limited Seating**

**NO standing permitted**



## Saturday P.M., April 1

The following Limited Attendance Sessions (LAS 18-LAS 21), will be presented in English by members of the Japan Endodontic Association.

**LAS 18** (Limited Attendance Sessions)  
Room 314  
Moderator: Tadao Toda, D.D.S.  
Osaka, Japan

**Lasers in endodontics: Clinical application and assessment**  
8:30 - 9:15 a.m.

**Koukichi Matsumoto, D.D.S., Ph.D.**  
Tokyo

Laser therapy is about to be put into practice in dentistry as well as medicine following the quick development of laser technology. This presentation is based on clinical experience with some of the different types of laser systems currently available to dentistry. Learn how to diagnose vital, nonvital and pulpitis of the dental pulp by laser. Understand the pain reduction of dentin hypersensitivity by some types of lasers and the stimulation of different points including the tooth surface, root apex and acupuncture points. At conclusion, each participant should be able to:

- Assess the indication and techniques of indirect and direct pulp capping, vital amputation, root fracture and perforation into the periodontium by laser.
- Recognize how to remove the debris deposited on the apical seat by laser and why the postoperative pain after one visit endodontic treatment in combination with laser decreases in comparison with the usual technique.
- Confirm the possibility of sterilization and strengthening the root canal wall in combination with diamine silver fluoride solution and laser.
- Study the possibility of removing the filled gutta-percha and fractured instruments from root canals and of obturation by laser.
- Discuss the possibility of pain control including continuous percussion pain and trigeminal neuralgia by laser.
- Learn the possibility of drainage from the apical abscess by laser.

**LAS 19** (Limited Attendance Session)  
Room 314  
Moderator: Tadao Toda, D.D.S.  
Osaka, Japan

**TriAuto ZX and microendodontics**  
9:15 - 10 a.m.

**Chihiro Kobayashi, D.D.S., Ph.D.**  
Tokyo

Each participant should be able to understand rationale and mechanism of the TriAuto ZX and how the TriAuto ZX works in microendodontics. At conclusion, each participant should be able to:

- Understand the technology involved.
- Describe the new concept for nickel-titanium rotary preparation using the TriAuto ZX.
- Describe the steps and procedures for nickel-titanium rotary preparation using ProFiles, Orifice Shapers and GT rotary files.

**LAS 20** (Limited Attendance Session)  
Room 314  
Moderator: Tadao Toda, D.D.S.  
Osaka, Japan

**Active oxygen and endodontic treatment: Action of medicaments**  
10 - 10:45 a.m.

**Muneyoshi Yamazaki, D.D.S., Ph.D.**  
Matsudo, Japan  
**Yasuhisa Tsujimoto, D.D.S., Ph.D.**  
Matsudo, Japan

This presentation examines recent investigations into the effects of active oxygen and applications for endodontics. Various medicaments are used in endodontic treatment, including the combination NaClO and H<sub>2</sub>O<sub>2</sub>. The reaction of both chemicals is as follows: NaClO + H<sub>2</sub>O<sub>2</sub> → NaCl + H<sub>2</sub>O + 2O. 2O is the oxygen atom which is reactive and changes to O<sub>2</sub>. However, the detailed reaction mechanism has not been clarified. Electron spin resonance spectroscopy, combined with a spin-trapping technique, was used to study characterization of a mixed solution of NaClO and H<sub>2</sub>O<sub>2</sub>. This method was used to study free radicals and some types of active oxygens.

## Saturday P.M./Sunday A.M., April 2



Active oxygens have been called to attention because they have a bactericidal effect and induce abnormal biological phenomena, such as inflammation, radiation damage, aging and mutation. In addition, we studied bactericidal effect, DNA degradation effect and tooth bleaching effect of active oxygen species. The results will be presented.

### **LAS 21** (*Limited Attendance Session*)

Room 314

**Moderator:** Tadao Toda, D.D.S.  
Osaka, Japan

### **Diagnosis of irreversible pulpitis and its pathogenesis**

**10:45 - 11:30 a.m.**

**Takashi Matsuo, D.D.S., Ph.D.**  
Tokushima, Japan

Differential diagnosis of reversible and irreversible pulpitis is indispensable to correct treatment planning, although discrimination between them is difficult even now. It has been generally presumed that the state of the pulp changes from reversible to irreversible pulpitis in the early stages of pulpal pathosis, and infected pulp has been considered irreversible. However, we clinically examined the success rate of direct pulp capping applied to carious pulp exposures and demonstrated that a success rate of 80% or higher was expected in choosing cases, indicating direct pulp capping was applicable even in carious pulp exposures. Moreover, we showed that the degree of bleeding on pulp exposure was indicative of the prognosis of this treatment. Hence, we intended to develop a diagnosis method using pulpal blood from pulp exposure sites. Quantitative analysis of inflammatory factors in pulpal blood showed that PMN-elastase was statistically higher in inflamed pulp than in normal pulp, indicating that PMN-elastase would play important roles when pulpitis changed from reversible to irreversible. Thus, we examined PMN-mediated injury to pulp cells in vitro, and demonstrated that PMN caused pulpal cell detachment through the degradation of extracellular. At conclusion, each participant should be able to:

- Understand matrices, which may lead to pulpal tissue destruction.

### **Afternoon Sessions**

#### **Award Luncheon**

Kalakaua Ballrooms B & C

(by ticket only)

**Moderator:** Terryl A. Propper  
Nashville, Tenn.

**12 noon - 1:15 p.m.**

#### **Louis I. Grossman Award**

Geoffrey Heithersay, B.D.S, M.D.S.

Adelaide, Australia

The Louis I. Grossman Award is given to an AAE member for cumulative publication of significant research studies which have made an extraordinary contribution to endodontology.

#### **Edward M. Osetek Educator Award**

Roberta Pileggi, D.D.S., M.S.

Houston, Texas

This award is given to an Active AAE Member with less than six years teaching experience for earning esteem and respect from students and faculty associates and for the impact on endodontics that former/current students have made.

#### **Graduate Student Awards**

Awards for oral research presentations, poster research presentations and table clinics will also be presented.

#### **General Assembly**

Room 324

**1:30 - 3 p.m.**

#### **Pre-Dinner Dance Reception**

Hilton - Coral Lounge and Ballroom

**6:30 - 7:30 p.m.**

#### **President's Dinner Dance**

**7:30 p.m. - 12 midnight**

## **Sunday, April 2**

#### **Farewell Breakfast**

Hilton - Honolulu Suite

(by ticket only)

**7:30 - 9 a.m.**

#### **Louis I. Grossman Award**



Geoffrey Heithersay

#### **Edward M. Osetek Educator Award**



Roberta Pileggi

#### **President's Dinner Dance**

### **Enter the Dragon Gala**

Celebrate the Chinese New Year - the Year of the Dragon! Join the Lion Dance as it makes its way with color and sound from the pre-dinner dance reception into the festive dining room.

Enjoy a sumptuous Chinese dinner in an elegant setting, then dance to the music of the Motor City Angels. Whether your beat is swing, big band or pulsating Latin rhythms, you're sure to like this popular group!

A cash bar will be available during the pre-dinner dance reception.





## Past President

*W. Clyde Davis .....	'43-44	I.B. Bender .....	'72-73
*Ralph F. Sommer .....	'44-45	Charles A. Scott Jr. ....	'73-74
*Robert G. Kesel .....	'45-46	Alfred L. Frank .....	'74-75
*E.G. Van Valey .....	'46-47	Robert A. Uchin .....	'75-76
*Maynard K. Hine .....	'47-48	Frank B. Trice .....	'76-77
*Louis I. Grossman .....	'48-49	George A. Zurkow .....	'77-78
*Elmer A. Jasper .....	'49-50	Harry Blechman .....	'78-79
*Raymond L. Girardot .....	'50-51	Paul E. Zeigler .....	'79-80
*George G. Sharp .....	'51-52	*Edward M. Osetek .....	'80-81
*F. Darl Ostrander .....	'52-53	Henry J. Van Hassel .....	'81-82
*Laurence A. Lucas .....	'53-54	Noah Chivian .....	'82-83
* N. Weir Burkman .....	'54-55	Donald E. Arens .....	'83-84
*Harry J. Healey .....	'55-56	Stephen F. Schwartz .....	'84-85
*John R. Pear .....	'56-57	Herbert Schilder .....	'85-86
*George C. Hare .....	'57-58	Michael A. Heuer .....	'86-87
George G. Stewart .....	'58-59	Charles J. Cunningham .....	'87-88
*J. Henry Kaiser .....	'59-60	Joseph D. Maggio .....	'88-89
*Paul P. Sherwood .....	'60-61	Gerald C. Dietz Sr. ....	'89-90
*Glenn R. Brooks .....	'61-62	James C. McGraw .....	'90-91
*Vincent B. Milas .....	'62-63	Joseph I. Tenca .....	'91-92
James H. Sherard Jr. ....	'63-64	Stuart B. Fountain .....	'92-93
Jacob B. Freedland .....	'64-65	Eric J. Hovland .....	'93-94
*Henry S. Schmidt .....	'65-66	Richard C. Burns .....	'94-95
John I. Ingle .....	'66-67	Philip W. Cohen .....	'95-96
Edwin C. Van Valey .....	'67-68	Jerome V. Pisano .....	'96-97
*Samuel S. Patterson .....	'68-69	Denis E. Simon III .....	'97-98
*Warren J. Hedman .....	'69-70	Carl W. Newton .....	'98-99
*John F. Bucher .....	'70-71		
Dudley H. Glick .....	'71-72		

\* Deceased



## AAE Foundation

### 2000

Robert L. Reames  
Herbert Schilder  
John D. West

### 2001

Wayne G. Bemis  
Noah Chivian  
Gerald C. Dietz Sr.

### 2002

Stanley J. Einbender  
James C. McGraw  
Darrell W. Zenk

### AAE Officers Serving as Trustees

Harmon R. Katz, AAE President  
James L. Gutmann, AAE President-elect  
Samuel O. Dorn, AAE Secretary  
Carl W. Newton, AAE Immed. Past Pres.  
Irma S. Kudo, AAE Exec. Dir. (ex officio)



## American Board of Endodontics

### 2000

Gerald N. Glickman  
Billie G. Jeansonne  
William T. Johnson

### 2001

Gary R. Hartwell  
Marshall D. Peikoff  
H. Robert Steiman

### 2002

Paul J. Ashkenaz  
Charles J. Cunningham  
Martin Trope

# Award Winners



## Edgar D. Coolidge Award

*Edgar D. Coolidge .....	'69
*Harry B. Johnston .....	'70
*Henry A. Bartels .....	'71
*Bertram L. Wolfsohn .....	'74
*Vincent B. Milas .....	'75
Worth B. Gregory .....	'78
Jacob B. Freedland .....	'80
Alfred L. Frank .....	'81
George G. Stewart .....	'82
*F. Darl Ostrander .....	'83
*Maynard K. Hine .....	'83
*George C. Hare .....	'84
*Irving J. Naidorf .....	'85
Harry Blechman .....	'86
I.B. Bender .....	'87
Dudley H. Glick .....	'88
*Samuel S. Patterson .....	'89
Robert A. Uchin .....	'90
Michael A. Heuer .....	'91
*Edward M. Osetek .....	'92
Harold Gerstein .....	'93
Henry J. Van Hassel .....	'93
Donald E. Arens .....	'94
*Harold A. Maxmen .....	'94
Herbert Schilder .....	'95
Stuart B. Fountain .....	'96
Joseph D. Maggio .....	'97
Gerald C. Dietz Sr. ....	'98
John I. Ingle .....	'99

## Louis I. Grossman Award

*Louis I. Grossman .....	'73
*Birger Nygaard-Ostby .....	'76
I.B. Bender .....	'78
Samuel Seltzer .....	'80
Harold R. Stanley .....	'81
Kaare Langeland .....	'82
Henry J. Van Hassel .....	'84
*Melvin Goldman .....	'89
Syngcuk Kim .....	'90
Calvin D. Torneck .....	'91
Henry O. Trowbridge .....	'92
Mahmoud Torabinejad .....	'93
Herbert Schilder .....	'96

## Ralph F. Sommer Award

Calvin D. Torneck .....	'84
Alfred L. Frank .....	'85
Mahmoud Torabinejad .....	'86
John I. Ingle .....	'87
Leif Tronstad .....	'90
Jens O. Andreasen .....	'91
I.B. Bender .....	'93
Samuel Seltzer .....	'93
Goran Sundqvist .....	'94
Gunnar Bergenholtz .....	'96

## Edward M. Osetek Educator Award

*Gordon D. Mattison .....	'95
Eric M. Rivera .....	'96
Asgeir Sigurdsson .....	'98
David E. Witherspoon .....	'99

## Honorary Members

*Edgar D. Coolidge .....	'48
*W. Clyde Davis .....	'48
*Bernhard Gottlieb .....	'48
*Edward S. Hatton .....	'49
*Walter Hess .....	'49
*Hermann Prinz .....	'49
*Francisco Pucci .....	'49
*Sir E. Wilfred Fish .....	'56
*Birger Nygaard-Ostby .....	'58
Mary Crowley .....	'66
*Ralph F. Sommer .....	'67
Harold R. Stanley .....	'68
*Maynard K. Hine .....	'69
*Maury Massler .....	'71
*Louis I. Grossman .....	'73
*Oscar A. Maisto .....	'79
Henry O. Trowbridge .....	'86
David H. Pashley .....	'92
Irma S. Kudo .....	'94
Frank N. Lentine .....	'94
Michel Maillefer .....	'94
Margaret R. Byers .....	'99

## President's Award

Peter A. Paesani .....	'97
------------------------	-----

\*Deceased



## Board and Committee Meetings

All Board and Committee meetings will be held at the Hilton.

### Monday, March 27

#### AAE Board Meeting

8 a.m. - 5 p.m., South Pacific Ballroom I

#### ABE Board Meeting

7 a.m. - 6 p.m., South Pacific Board Room

#### Foundation Public Relations Committee

12 noon - 5 p.m., Iolani Suite I

### Tuesday, March 28

#### AAE Foundation Meeting

8 a.m. - 5 p.m.  
South Pacific Ballroom II

#### Ad Hoc Committee on Endodontic Software

9 a.m. - 4:30 p.m., Honolulu Suite I

#### Ad Hoc Committee on Endodontic Workforce Assessment

8 a.m. - 5 p.m., Honolulu Suite II

**Continuing Education Committee**  
12 noon - 4 p.m., Rainbow Suite I, Lower Level

#### Dental Benefits Committee

9 a.m. - 3 p.m., Rainbow Suite II, Lower Level

### Wednesday, March 29

#### Evidence-based Endodontics Organizing Committee

8 - 11:30 a.m., Honolulu Suite I

#### Educational Affairs Committee

1 - 5 p.m., Iolani Suite VI

#### Honors and Awards

8:30 a.m. - 11:30 a.m., Iolani Suite VII

### Friday, March 31

#### Ad Hoc Committee on Oral Disease, Endodontic Treatment and Systemic Health

7 - 8:15 a.m., Iolani Suite II

#### Clinical Practice Committee

7 - 8:15 a.m., Iolani Suite I

#### Constitution and Bylaws

7 - 8:15 a.m., Iolani Suite III

#### Editorial Board

7 - 8:15 a.m., Honolulu Suite I

#### Governmental Affairs and Federal Dental Health Services

7 - 8:15 a.m., Rainbow Suite III, Lower Level

#### Membership Insurance

7 - 8:15 a.m., Iolani Suite VI

#### Membership Services Committee

7 - 8:15 a.m., Iolani Suite VII

#### Professional Standards, Peer Review and Ethics

7 - 8:15 a.m., Iolani Suite IV

#### Public and Professional Affairs

7 - 8:15 a.m., Iolani Suite V

#### Research and Scientific Affairs Committee

7 - 8:45 a.m., Nautilus Suite II

### Saturday, April 1

#### Past Presidents' Breakfast

7:30 - 8:30 a.m., Rainbow Suite I, Lower Level

### Sunday, April 2

#### AAE Board Meeting

8 a.m. - 3 p.m., Rainbow Suites I and II, Lower Level

## AAE Alliance



### AAE Alliance Officers

#### President

Dorothy "Dotty" Nitta  
(Lawrence)

#### President-Elect

Beverly Paulk (Glenn)

#### Secretary

Bonnie Nielson (Dennis)

#### Treasurer

Robin Mann (Sheldon)

#### Parliamentarian

Mary Kondo (Gary)

### AAE Alliance Program

All events will be held in the AAE Alliance Hospitality Room, the Ti Leaf Suite at the Hilton, Mid Pacific Conference Center, except the Silent Auction.

#### Tuesday

Registration

#### Wednesday

Registration

6:30 - 8:30 p.m.

Third Annual Silent Auction at the Welcome Reception

#### Thursday

Registration

7:30 - 8:30 a.m.

Board Meeting (1999-2000)

8:30 - 10:30 a.m.

Continental Breakfast, lei making workshop

#### Friday

Registration

8:30 - 9:30 a.m.

General Membership Meeting

9:30 - 11 a.m.

Breakfast with a Hawaiian storyteller (Purchase ticket at AAE Alliance Registration desk.)

#### Saturday

7:30 - 8:30 a.m.

Board Meeting (2000-2001)

8:30 - 10:30 a.m.

Continental breakfast, tropical flower arranging workshop

# Meetings: Alumni, Affiliates and Others



All meeting rooms are at the Hilton except as noted.

## Tuesday, March 28

### Treloar and Heisel Reception

6:30 - 8 p.m. .... South Pacific II and III

## Wednesday, March 29

### Alpha Omega International Dental Fraternity Reception

8 p.m. - midnight .... Rainbow Lanai Restaurant/Rainbow Tower

### Baylor College of Dentistry, Graduate Endodontics

8:30 - 11 a.m. .... Rainbow Suites I, II & Patio

### Otani Endodontic Society (30<sup>th</sup> Anniversary)

1:30 - 5 p.m. .... Rainbow Suites I and II, lower level

### U.S. Army Association of Endodontists Business Meeting

4:30 - 6:30 p.m. .... Honolulu Suite I

### College of Diplomates Board Meeting

4:30 - 6:30 p.m. .... South Pacific Board Room

## Thursday, March 30

### Christian Endodontic Society Reception

5 - 6 p.m. .... Sea Pearl Suite V

### College of Diplomates Business Meeting

1:45 - 2:15 p.m. .... Kalakaua Ballroom C, Convention Center

### District II New York/New Jersey Reception

6:30 - 8:30 p.m. .... Rainbow Suites I, II & Patio

### Harry J. Healy Endodontic Study Club Reception

6:30 - 8 p.m. .... Iolani Suites I and II

### IFEA Board of Directors Meeting

1 - 2:30 p.m. .... South Pacific Board Room

### IFEA Reception

6 - 7:30 p.m. .... Honolulu Suite II

### MCV/VCU Endodontic Alumni Association Reception

5:30 - 7 p.m. .... Sea Pearl Suite II

### Michigan Association of Endodontists Reception

6:30 - 8 p.m. .... South Pacific Ballroom IV

### Nova Southeastern University

6:30 - 8:30 p.m. .... Nautilus Suite II

### Tarheel Endodontic Association Business Meeting

5 - 6 p.m. .... Iolani Suites III and IV

### Tufts University, School of Dental Medicine Reception

6 - 8 p.m. .... South Pacific Ballroom I

### Univ. of Illinois Endodontic Alumni Dinner

6 - 9 p.m. .... South Pacific Ballroom II

### Univ. of North Carolina Endodontic Alumni Reception

6 - 7:30 p.m. .... Iolani Suites III and IV

### Univ. of Maryland Dental School Reception

6:30 - 8:30 p.m. .... Sea Pearl Suite III

### Univ. of Minnesota Alumni Reception

6 - 8 p.m. .... Honolulu Suite III

### Univ. of Pennsylvania Endodontic Department Reception

6 - 7:30 p.m. .... Honolulu Suite I

### Univ. of Pittsburgh School of Dental Medicine Reception

6 - 8 p.m. .... Sea Pearl Suite IV

### Univ. of Texas-Houston Endodontic Alumni Reception

6:30 - 8 p.m. .... Iolani Suite V

### Univ. of Texas-San Antonio Reception

6 - 7:30 p.m. .... Iolani Suites VI and VII

### U.S. Navy Association of Endodontists Reception

6 - 7:30 p.m. .... Coral Ballroom I

### West Virginia University Alumni Association Reception

5:30 - 7:30 p.m. .... Sea Pearl Suite VI

## Friday, March 31

### Albert Einstein Endodontic Alumni Society Reception

6:30 - 8 p.m. .... Honolulu Suite II

### Boston University Endodontic Alumni Association

#### Banquet

7 - 11 p.m. .... South Pacific Ballrooms I and II

### Endodontic Standards Subcommittee Meeting

8:30 - 10:30 a.m. .... Honolulu Suite II

### Florida Association of Endodontists Business Meeting

4:30 - 6:30 p.m. .... Sea Pearl Suite II

### IFEA Breakfast Meeting

7 - 8:30 a.m. .... Rainbow Suite I

### Iowa Endodontic Reception

6 - 8 p.m. .... Sea Pearl Suite I

### New York University Endodontic Alumni Association

#### Reception

6 - 8 p.m. .... Honolulu Suite III

### Univ. of Louisville Endo Alumni

6:30 - 7:30 p.m. .... Sea Pearl Suite IV

### Univ. of Washington Alumni Reception

6 - 8:30 p.m. .... Honolulu Suite I

## Saturday, April 1

### Air Force Affiliate Association

7 - 8:30 a.m. .... Hale Koa Hotel, Lualima 3 and 4

### Boston University Endodontic Alumni Association

#### Breakfast Meeting

7 - 8:15 a.m. .... Honolulu Suite I

### Oklahoma Association of Endodontists Breakfast

#### Meeting

7 - 8:30 a.m. .... Iolani Suite IV

### Univ. of Southern California, Department of Endodon-

#### tics Breakfast Meeting

7 - 8:30 a.m. .... Iolani Suites I, II & III

### U.S. Navy Association of Endodontists Breakfast

#### Meeting

7 - 8:30 a.m. .... Iolani Suites V, VI & VII

### Endodontic Section of Triple O Breakfast Meeting

7 - 8:30 a.m. .... South Pacific Boardroom



# Exhibitors

The Technical Exhibition will be located in exhibit hall (Level 1) of the Hawaii Convention Center.

Exhibit hours are as follows:

Thursday, March 30  
10:30 a.m. - 6 p.m.

Friday, March 31  
7:30 a.m. - 5 p.m.

Saturday, April 1  
7:30 a.m. - 1 p.m.

Also in the exhibit hall of the Hawaii Convention Center:

Stop by the Poster Research Presentations and Table Clinics while you're in the exhibit halls. The presentation schedule follows:

**Poster Research Presentations 1-42**  
Endodontist Section

Friday, March 31  
8 - 11 a.m.

**Poster Research Presentations 43-67**  
Graduate Student Section

Saturday, April 1  
8 - 11:30 a.m.

**Table Clinics 1- 11**  
Endodontist Section

Friday, March 31  
8 - 11 a.m.

**Table Clinics 12-32**  
Graduate Student Section

Saturday, April 1  
8 - 11:30 a.m.

- 901 Analytic Endodontics  
1717 W. Collins Ave.  
Orange, CA 92867
- 711 Aseptico, Inc.  
P.O. Box 1548  
Woodinville, WA 98072-1548
- 813 ASI Medical, Inc.  
14550 Easter Ave., Ste. 700  
Englewood, CO 80112
- 912 Becker-Parkin Dental Supply Company, Inc  
1700 N. W. 65th Ave., Ste. 3  
Plantation, FL 33313
- 600 Brasseler USA  
800 King George Blvd.  
Savannah, GA 31419
- 107 Carl Zeiss, Inc.  
One Zeiss Drive  
Thornwood, NY 10594
- 508 Centrix, Inc.  
770 River Rd.  
Shelton, CT 06484
- 610 Chige, R. Inc.  
4531 N. Dixie Hwy.  
Boca Raton, FL 33431
- 611 CK Dental Specialties  
1407 North Batavia, Ste. 110  
Orange, CA 92867
- 807 Dentrax Dental Systems  
727 E. Utah Valley Dr., Ste. 500  
American Fork, UT 84003
- 500 Dentsply/MidWest  
901 West Oakton St.  
Des Plaines, IL 60018
- 502 Dentsply/MPL  
9400 Kings St.  
Franklin Park, IL 60131-2116
- 409 Dentsply SoftDent  
7939 Honeygo Blvd., Ste. 212  
Baltimore, MD 21236
- 504 Dentsply/Maillefer  
5001 East 68th St. #500  
Tulsa, OK 74136
- 401 Dentsply Tulsa  
5001 E. 68th St., Ste. 500  
Tulsa, OK 74136
- 200 Designs For Vision, Inc.  
760 Koehler Ave.  
Ronkonkoma, NY 11779
- 803 DEXIS  
4117 El Camino Real  
Palo Alto, CA 94306
- 712 DiaDent  
11-3871 N. Fraser Way  
Burnaby, BC V5J 5G6
- 921 Discus Dental Software  
8550 Higuera St.  
Culver City, CA 90232
- 919 EMS/DSR Electro Medical Systems  
Diagnostic Subtraction Radiography  
670 International Pkwy., Ste. 160  
Richardson, TX 75081
- 400 Endoco, Inc.  
5180 Park Ave.  
Memphis, TN 38119
- 514 Endure Medical Inc.  
1490 Ventura Drive  
Cumming, GA 30040
- 615 Endodontic Practice  
524 Watford Way, Mill Hill  
London, ENGLAND NW7 4SY
- 202 FiberDent Corp.  
3753 Varsity Drive  
Ann Arbor, MI 48108
- 713 Global Surgical Corporation  
3610 Tree Court Industrial Blvd.  
St. Louis, MO 63122
- 1009 Hartzell and Son, G.  
2372 Stanwell Circle  
P.O. Box 5988  
Concord, CA 94520
- 613 HealthFirst Corporation  
22316 70th Ave. W, Unit A  
Mountlake Terrace, WA 98043
- 511 Heraeus Kulzer, Inc.  
4315 S. Lafayette Blvd.  
South Bend, IN 46614
- 1101 High Q Dental  
6302 E. Aster Dr.  
Scottsdale, AZ 85254
- 811 Hu-Friedy Mfg. Co. Inc.  
3232 N. Rockwell St.  
Chicago, IL 60618
- 201 J. Morita USA, Inc.  
9 Mason  
Irvine, CA 92618
- 1017 JEDMED  
5416 JEDMED Ct.  
St. Louis, MO 63129-2217
- 918 Jordco, Inc.  
595 N.W. 167th Ave.  
Beaverton, OR 97006
- 614 KaVo America Corp.  
340 E. Main St.  
Lake Zurich, IL 60047
- 913 Kerr Corporation  
28200 Wick Rd.  
Romulus, MI 48174

# Exhibitors



- 501 Leica Microsystems Inc.  
P. O. Box 123  
Buffalo, NY 14240
- 706 Lexi-Comp Inc.  
1100 Terex Rd.  
Hudson, OH 44236
- 1001 Lightspeed Technology Inc.  
15600 San Pedro, Ste. 304  
San Antonio, TX 78232
- 819 Lippincott Williams & Wilkins  
227 E. Washington Square  
Philadelphia, PA 19106-3780
- 215 Mani, Inc.  
743 Nakaakutsu  
Takanezawa-machi  
Tochigi-ken 329-1234 Japan
- 609 Medidenta International, Inc.  
39-23 62nd St.  
Woodside, NY 11377
- 916 Metalift Crown and Bridge Removal System  
7855 Jefferson Hwy., Ste. C  
Baton Rouge, LA 70809
- 805 Milestone Scientific  
151 S. Pfingsten Rd., Unit D  
Deerfield, IL 60015
- 308 Moyco Union Broach/Thompson  
200 Commerce Dr.  
Montgomeryville, PA 18936
- 410 Nephron Dental Supply  
321 E. 25th St.  
Tacoma, WA 98421
- 703 Obtura Corp/Spartan Marketing Group  
1663 Fenton Business Park Court  
Fenton, MO 63026
- 603 Orascoptic Research  
5225-3 Verona Rd.  
Madison, WI 53711
- 211 Osada, Inc.  
8436 W. Third St., Ste. 695  
Los Angeles, CA 90048
- 513 PBHS Web Site Design Services  
52 Mission Circle, Ste. 210  
Santa Rosa, CA 95409
- 512 PBS Endo-Pro Business Systems, Inc.  
16405 Chitina Court  
Cedar Park, TX 78613
- 505 Professional Results, Inc.  
17 Phaedra  
Laguna Niguel, CA 92677
- 608 Profit Finder  
401 E Lake St.  
Wayzata, MN 55391
- 704 Quality Aspirators  
P.O. Box 382120  
Duncanville, TX 75138
- 515 Quintessence Publishing Co., Inc.  
551 N. Kimberly Dr.  
Carol Stream, IL 60188
- 411 RGP Dental  
22 Burnside St.  
Bristol, RI 02809
- 908 ROEKO USA  
825 S. Primrose Ave., Ste. E  
Monrovia, CA 91016
- 1013 Roydent Dental Products, Inc.  
1010 W. Hamlin Rd.  
Rochester Hills, MI 48309
- 413 SATELEC - AMADENT  
1236 Brace R., Bldg. B  
Cherry Hill, NJ 08034
- 723 Schick Technologies, Inc.  
31-00 47th Ave.  
Long Island City, NY 11101
- 710 Schwed Co.  
124-02 Metropolitan Ave.  
Kew Gardens, NY 11415-2712
- 312 Seiler Instrument Company  
170 E. Kirkham Ave.  
St. Louis, MO 63119
- 1112 Sullivan- Schein Dental  
10920 W. Lincoln Ave.  
West Allis, WI 53227
- 1109 SurgiTel/General Scientific Corporation  
77 Enterprise Dr.  
Ann Arbor, MI 48103
- 404 Tel-A-Patient, Inc.  
151 Kalmus Dr., Ste. K1  
Costa Mesa, CA 92626
- Registration Area  
Treloar & Heisel, Inc.  
3132 Wilmington Rd.  
P O Box 5168  
New Castle, PA 16105
- 1100 TREXTrophy Dental Company  
37 Apple Ridge Rd.  
Danbury, CT 06810
- 714 Trident Dental, Inc.  
Route 2, Box 251-A  
Hendersonville, NC 28792
- 313 Ultradent Products, Inc.  
505 West 10200 South  
South Jordan, UT 84095
- 1110 Vista Dental Products  
2200 Northwestern Ave.  
Racine, WI 53404
- 810 SS White Burs, Inc.  
1145 Towbin Ave.  
Lakewood, NJ 08701
- 808 XELAN, The Economic Association of Health Professionals  
401 West A St., Ste. 2210  
San Diego, CA 92101

## Need a Break?

**Complimentary coffee will be provided in the exhibit hall at the following times:**

**Thursday .... 10:30 a.m.**  
**Thursday ..... 2:45 p.m.**  
**Friday ..... 10:30 a.m.**  
**Friday ..... 2:30 p.m.**  
**Saturday ..... 10:30 a.m.**

**Badges must be worn in the exhibit hall.**

## Tape Recording

Many of the sessions will be tape-recorded. Stop by the Sound of Knowledge desk in the Hawaii Convention Center to purchase audio tapes.



# Participants

<b>A</b>	Cohn, Steven A. .... 36	Grubb, Timothy A. .... 23	Kim, Syngyeuk ..... 16
Abbott, Paul V. .... 18	Connor,	Gutmann, James L. ... 2, 8, 16	King, Kevin T. .... 8
Abdennour, Mario E. .... 34	Catherine Erwin ..... 32		Kinomoto, Yoshifumi ..... 25
Abitbol, Sarah ..... 19	Cope, Joy W. .... 34	<b>H</b>	Kirkpatrick, Timothy C. ... 13
Abrass, Louay ..... 13	Costa, Guido E. .... 34	Haga, Craig S. .... 2	Kitamura, Kazuo ..... 25
Adamian, Sevak ..... 34	Coury, Kirk A. .... 20	Hahn, Chin-Lo ..... 25	Ko, Hyunjung ..... 24
Aesaert, Guido ..... 37	Cox, Charles F. .... 35	Ham, Karla A. .... 33	Kobayashi, Chihiro .... 26, 38
Alexander, Joel B. .... 24	Cunningham, Charles J. ... 12	Hancock, Henry H. III .... 33	Koch, Kenneth A. .... 20
Al Fouzan, Khalid S. .... 31	Czubko, Myron J. .... 9	Harbert, Henry L. .... 10	Krell, Keith V. .... 2, 10, 13, 28
Amir, Faisal A. .... 34		Hargreaves,	Kum, Ki-Yon ..... 25
Anderson, Frank, A. .... 20	<b>D</b>	Kenneth M. .... 11, 13	Kurahara, John M. .... 2
Ang, Leslie C. H. .... 17	Dahl, Eva C. .... 21	Hartness, John D. .... 30	Kwak, Kyung-In ..... 25
Arias, Sara E. .... 24	Davis, Matthew C. .... 32	Hartwell, Gary R. .... 12	
Ashkenaz, Paul J. .... 12	Deblinger, Ronald I. .... 22	Hawkinson, Robert W. Jr. 36	<b>L</b>
Avellaneda, Patricia G. .... 24	DesRoches, Brian ..... 15	Heithersay, Geoffrey S. 8, 39	Lacoste, Roger R. .... 22
	Dietz, Gerald C. Jr. .... 20	Henry, Brian M. .... 26	Lan, Wan-Hong ..... 32
<b>B</b>	Dominguez, Mercedes S. 34	Herbranson, Eric J. ... 22, 29	Lee, Seung-Jong ..... 32
Bae, Kwang-Shik ..... 26	Dove, S. Brent ..... 30	Hicks, M. Lamar ..... 12	Lemon, Ronald R. .... 24
Baek, Seung-Ho ..... 24	Dovgan, Joseph S. .... 18	Hill, Augustyne V. .... 35	Levin, Linda G. .... 10
Bahcall, James K. .... 9	Dumsha, Thom C. .... 24	Himel, Van T. .... 1, 11, 24	Levine, Debora F. .... 31
Bal, Aneet S. .... 34		Hizatugu, Ruy ..... 37	Lim, Sung-Sam ..... 26
Balto, Khalid A. .... 31	<b>E</b>	Hoch, Sue ..... 34	Lin, Chun-Pin ..... 25
Barbakow, Fred ..... 14	Edwards, Kevin ..... 31	Holt, Gary ..... 24	Lin, Xia ..... 25
Barss, Joseph T. .... 9	Ellis, Jess T. .... 26	Hutter, Jeffrey W. .... 2, 27	Ling, Yu-Heng ..... 33
Baumgartner, J. Craig .... 27	El-Refai, Nivine Y. .... 31	Hwang, Ho-Keel ..... 14	
Behnen, Michael J. .... 19	Elsherif, Ismail I. .... 20		<b>M</b>
Behnia, Ali ..... 25	Engelhardt, Debra .... 17, 30	<b>I</b>	Madison, Sandra ..... 29
Benjamin, Ilya ..... 24	Eraso, Francisco ..... 27, 32	Ibrahim, Salsabyl ..... 19, 31	Madsen, Randall ..... 19
Bentkover, Scott K. .... 15	Ester, Todd V. .... 32	Iqbal, Mian K. .... 25	Maeda, Munehiro ..... 25
Bergeron, Brian E. .... 31		Isett, James D. .... 18	Makins, Scott R. .... 30
Bhatti, Suhail ..... 24	<b>F</b>		Malamed, Stanley F. .... 35
Bishop, Deborah S. ... 22, 30	Fayad, Mohamed I. .... 34	<b>J</b>	Martell, Bayardo ..... 19
Bonaccorso, Antonio ..... 20	Feintuch, Michael B. .... 34	Jaunberzins, Andris ..... 12	Matsumoto, Koukichi 25, 38
Bond, Michael S. .... 37	Ferraz, Caio C.R. .... 24	Jansonne, Billie G. .... 12	Matsuo, Takashi ..... 39
Borelli, Paolo ..... 32	Fine, Howard B. .... 22	Jiang, Jin ..... 13	Matsuoka, Emi ..... 25
Briseno, Benjamin ..... 32	Fong, Cheng D. .... 20	Johnson, Blair T. .... 17, 27	Mayer, Birgit ..... 14
Britto, Leandro R. .... 32	Frank, Robert J. .... 31	Johnson,	McDonald, Neville J. .... 25
Buchanan, L. Stephen .... 16	Fraser, John G. .... 26	Bradford R. .... 14, 19, 31	McGraw, James C. .... 27
Burgett, Gordon L. .... 17	Fried, Irving ..... 1, 17	Johnson, James D. .... 18	McNaught, Anthony G. ... 18
Burns, Richard C. .... 28	Friedman, Shimon ..... 29	Johnson, William T. .... 12	Meneghine, Gustavo ..... 26
Buurma, Brian J. .... 32	Fu, Derrick C. .... 2	Jones, Vincent R. .... 34	Mickel, Andre K. .... 28
Byrne, B. Ellen ..... 19	Fugate, Margaret ..... 20	Jostes, James L. .... 26	Miller, Stuart O. .... 34
	Fujimoto, Staphe T. .... 2	Jurosky, Kathryn A. .... 29	Minden, Nick J. .... 23, 37
<b>C</b>			Mohammed,
Caicedo, Ricardo ..... 24	<b>G</b>	<b>K</b>	Mohammed N. .... 34
Cantatore, Giuseppe ..... 21	Galvan, Robert R. Jr. .... 11	Kado, Eduardo ..... 37	Moiseiwitsch, Julian ..... 25
Carollo-Roit, Stella ..... 18	Gambarini, Gianluca ..... 24	Kang, Jean H. .... 31	Monsef, Mehdi ..... 14, 31
Carson, Kweli K. .... 34	George, Saju ..... 33	Kang, Sam-hee ..... 25	Morant, Ricardo D. .... 34
Casanova, Frank ..... 15	Glicknan,	Kanter, Keith G. .... 11	Morgan, William K. .... 33
Cerruti, Antonio ..... 24	Gerald N. .... 12, 24, 36	Kass, Charles P. .... 34	Munce, C. John ..... 21
Chae, Paul ..... 19	Goldstein, Shepard S. ... 2, 6-7	Kataoka, Hiroki ..... 25	Murashima, Yuko ..... 25
Chavez, Robert D. .... 34	Gomes, Brenda P.F.A. .... 24	Katsuumi, Ichiroh ..... 25	
Chen, Lilly ..... 26	Gonzalez, Patricia ..... 33	Katz, Harmon R. .... 1, 2, 8	<b>N</b>
Chivian, Noah ..... 28	Goodis, George T. .... 22	Kawaguchi, Kazuko ..... 26	Nakagawa, Kan-Ichi ..... 25
Chogle, Sami R. .... 32	Goodis, Harold E. ... 2, 11, 35	Kenee, David M. .... 34	Nakamura, Hiroshi ..... 25
Choi, Eugene H. .... 13	Goodman, Fredric. 2, 14, 27	Khalefa, Mohamed M. .... 19	Nakano-Hasegawa,
Clark, Tracy M. .... 19	Gorduysus, Mehmet O. ... 31	Khan, Bilal S. .... 34	Masako ..... 26
Cochet, Jean-Ives ..... 27	Grant, Glen ..... 9	Kim, Eui-Seong ..... 25	Ne, Rita F. .... 34
		Kim, Melanie ..... 25	Newcomb, Bruce E. .... 33
		Kim, Sungkyo ..... 26	Newton, Carl W. .... 27

# Participants

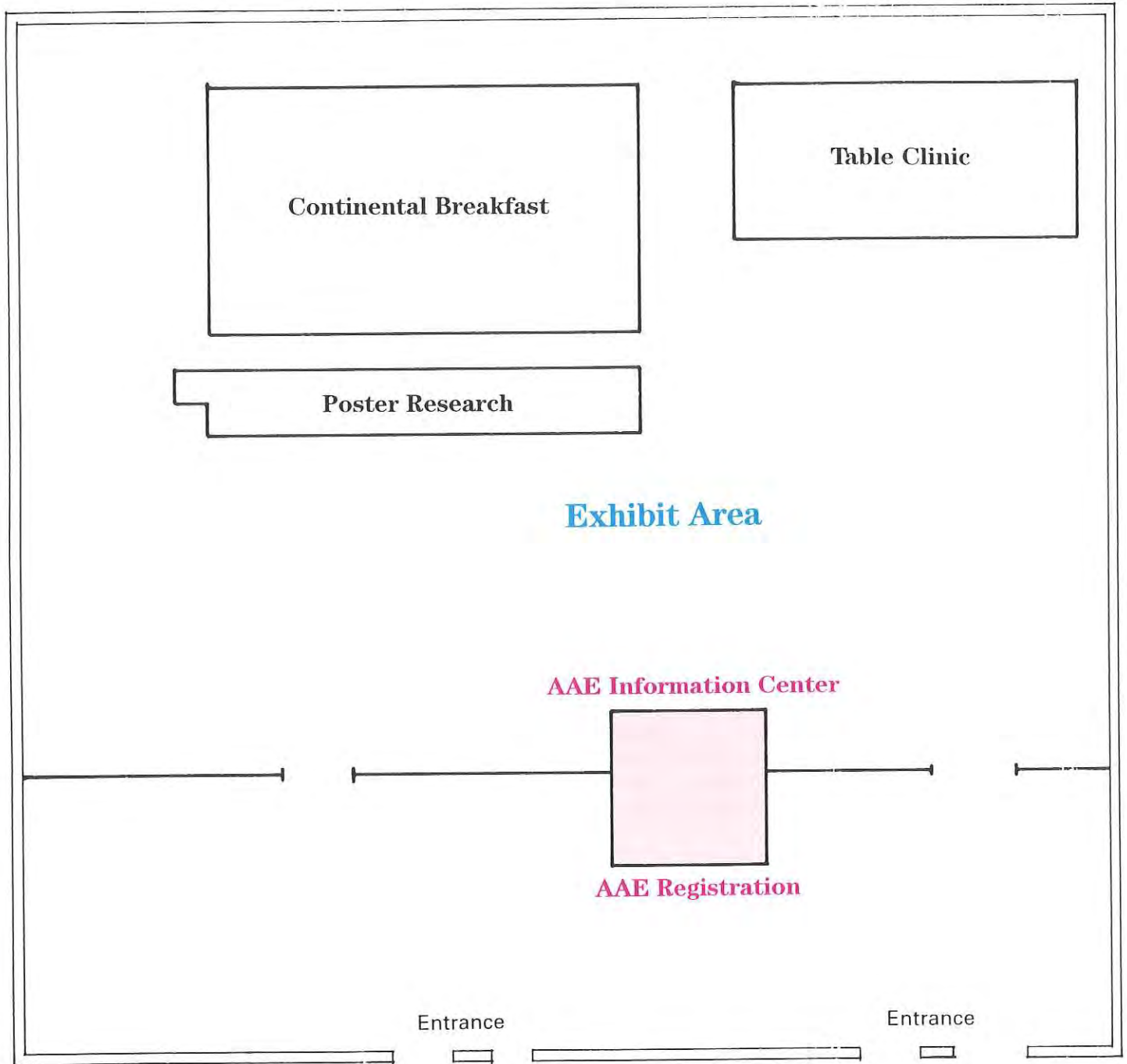


Ngoh, Emmanuel C. .... 12	R	Slocum, John W. Jr. .... 12	V
Nguyen, Nguyen Thanh .. 26	Radman, W. Paul ..... 23	Soluti,	Vaziri, Peyman ..... 33
Nguyen, Nguyen Tuong .. 33	Rakusin, Hedley ..... 22	Abdullah ..... 14, 20, 31, 32	Velvart, Peter ..... 14
Niemczyk, Stephen P. .... 15	Rauschenberger,	Souza-Filho,	W
Niemiec, Matthew S. .... 13	Cindy R. .... 6-7, 15	Francisco J. .... 26	Walker, Earl D. .... 33
Nitta, Dorothy ..... 2	Re, Dino ..... 24	Spolnik, Kenneth J. . 1, 2, 23	Wallace, James A. .... 22
Nitta, Lawrence K. .... 2, 9	Reader, Al ..... 13	Stabholz, Adam ..... 8	Webb, Terry D. .... 34
Nobuhara, Wade K. .... 2	Rivera, Eric M. .... 27	Stanley, Harold R. .... 35	Weber, Carol Diener ..... 35
Noghreian, Nooshin ..... 13	Robert, Geoffrey H. .... 13	Steffel, Charles L. .... 17, 22	Weisgold, Arnold S. .... 6-7
O	Roberts, Steven ..... 19	Steiman, H. Robert ..... 12	West, John D. .... 15, 21
Odom, Mark A. .... 29	Rose, Louis F. .... 6-7	Stewart, Mary L. .... 34	Wiener, B. Harvey ..... 27
Okino, Kazuzo ..... 26	Rosenberg, Robert J. .... 35	Strimer, Adam P. .... 35	Willershausen, Brita ..... 19
Olmsted, John S. .... 16	Rossman,	Suda, Hideaki ..... 16	Wilson, David Neil ..... 35
Oskoui, Malekshah ..... 33	Louis E. .... 1, 2, 6-7, 16	Svec, Timothy A. .... 11, 14	Wilson, Toby S. .... 11
Ozawa, Toshiko ..... 26	Roth, Jack S. .... 10	Swanson, Shawna M. .... 23	Wolaneck, Gary A. .... 19
P	Rousseau, William H. .... 33	T	Y
Palat, Milton ..... 37	Rubinstein,	Tajima, Michael S. .... 1, 2	Yamada, Jerome K. .... 2
Park, Jeong-Won ..... 26	Richard A. .... 29, 35	Teixeira, Fabricio R. .... 26	Yamada, Kuniaki ..... 27
Parsons, Joseph R. .... 33	Rudd, Andrew L. .... 31	Tismenetskiy, Vladimir ... 35	Yamasaki, Masahiro ..... 26
Paulk, Glenn L. .... 1, 2	S	Toda, Tadao ..... 38, 39	Yamauchi, Shizuko ..... 14
Peikoff, Marshall D. .... 12	Safavi, Kamran ..... 13	Torabinejad,	Yamazaki, Muneyoshi .... 38
Perinpanayagam,	Saint-Cyr, Spencer C. .... 34	Mahmoud ..... 2, 28	Yamazaki, Yasushi ..... 26
Hiran ..... 27, 33	Satchell, Paul G. .... 34	Trasatti, Candice ..... 33	Yang, Sung Eun ..... 26
Peters, Christine I. .... 14	Scheerer, Sonia Q. .... 19	Trautmann, Glenn A. .... 11	Yanpiset, Kallaya ..... 33
Peters, Ove A. .... 14	Schilder, Herbert ..... 21	Trope, Martin ..... 12, 28	Yeung, Kathy ..... 26
Peterson, Jill ..... 13	Schoenenberger,	Tsujimoto, Yasuhisa ..... 38	Yonemoto, Gary S. .... 2, 22
Pettiette, Mary T. .... 26	Kathrin ..... 13	Tyberg, Theodore ..... 29	Yoshioka, Takatomo ..... 26
Pileggi, Roberta ..... 9, 39	Scrimme, Michele A. .... 34	U	Z
Pineda, Franklin ..... 20, 27	Seidberg, Bruce H. .... 2, 35	Uppal, Baljit S. .... 13	Zenk, Darrell W. .... 31
Pongione, Giancarlo ..... 26	Shariff, Suhaila S. .... 33	Urbanczyk, Richard F. .... 35	Zhu, Qiang ..... 19
Pourjamasb, Bijan ..... 33	Shin, Su-Jung ..... 26		
Powell, William D. .... 22	Shojaei, Mariah ..... 33		
Pratten, Don H. .... 28	Sigurdsson,		
Price, Daniel K. .... 37	Asgeir ..... 13, 30, 36		
Propper,	Simon, Denis E. III ..... 21		
Terry A. .... 1, 2, 16, 39	Simon, Stephane ..... 27		
	Siragusa, Martha ..... 32		



# Hawaii Convention Center

## Level 1 (Exhibit Hall)



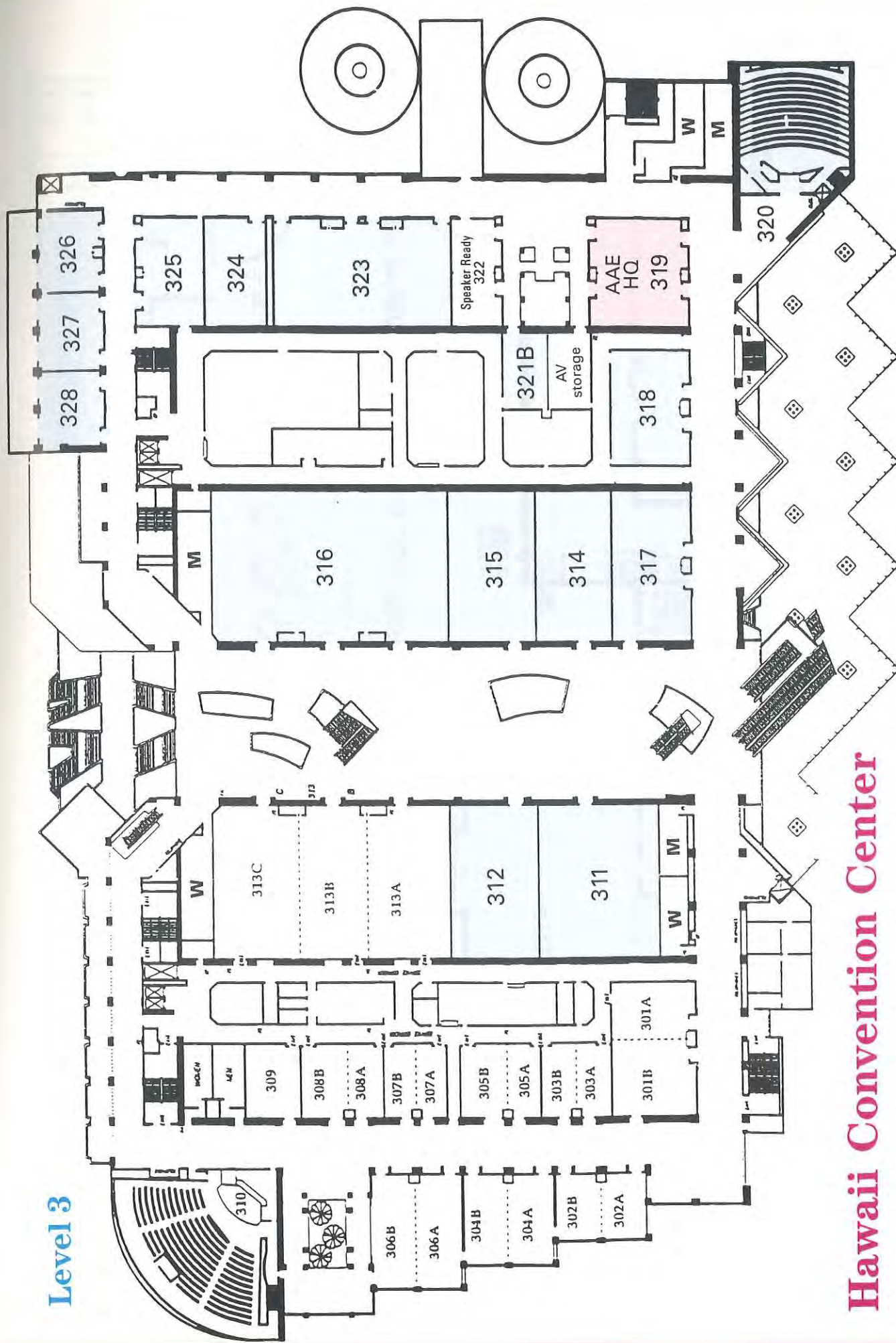
### Registration hours

Thursday, March 30 10:00 am - 5:00 pm  
Friday, March 31 7:30 am - 5:00 pm

### Exhibits will be open as follows:

Thursday, March 30 10:30 am - 6:00 pm  
Friday, March 31 7:30 am - 5:00 pm  
Saturday, April 1 7:30 am - 1:00 pm

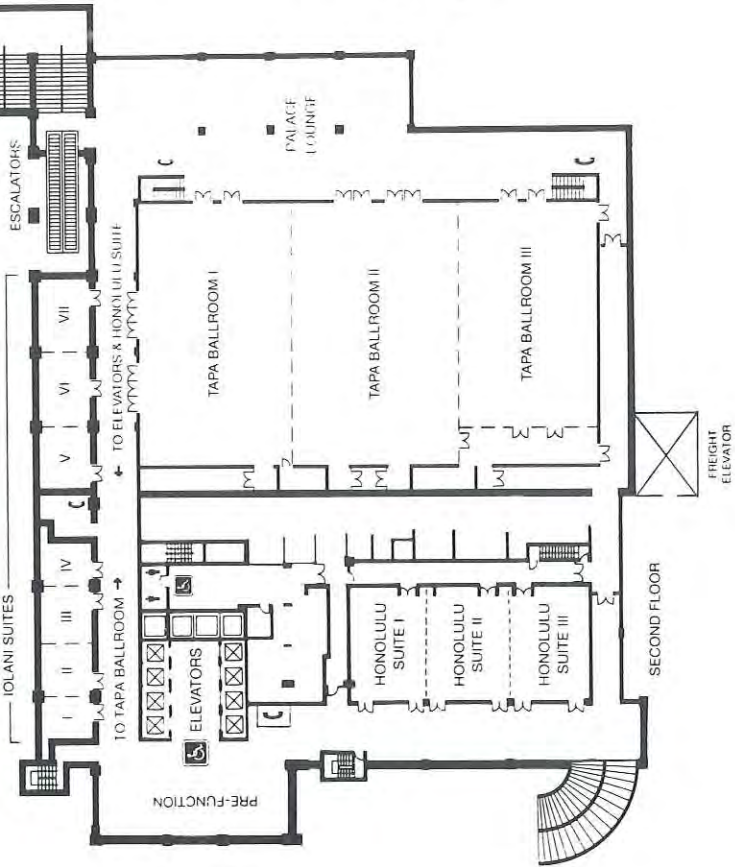
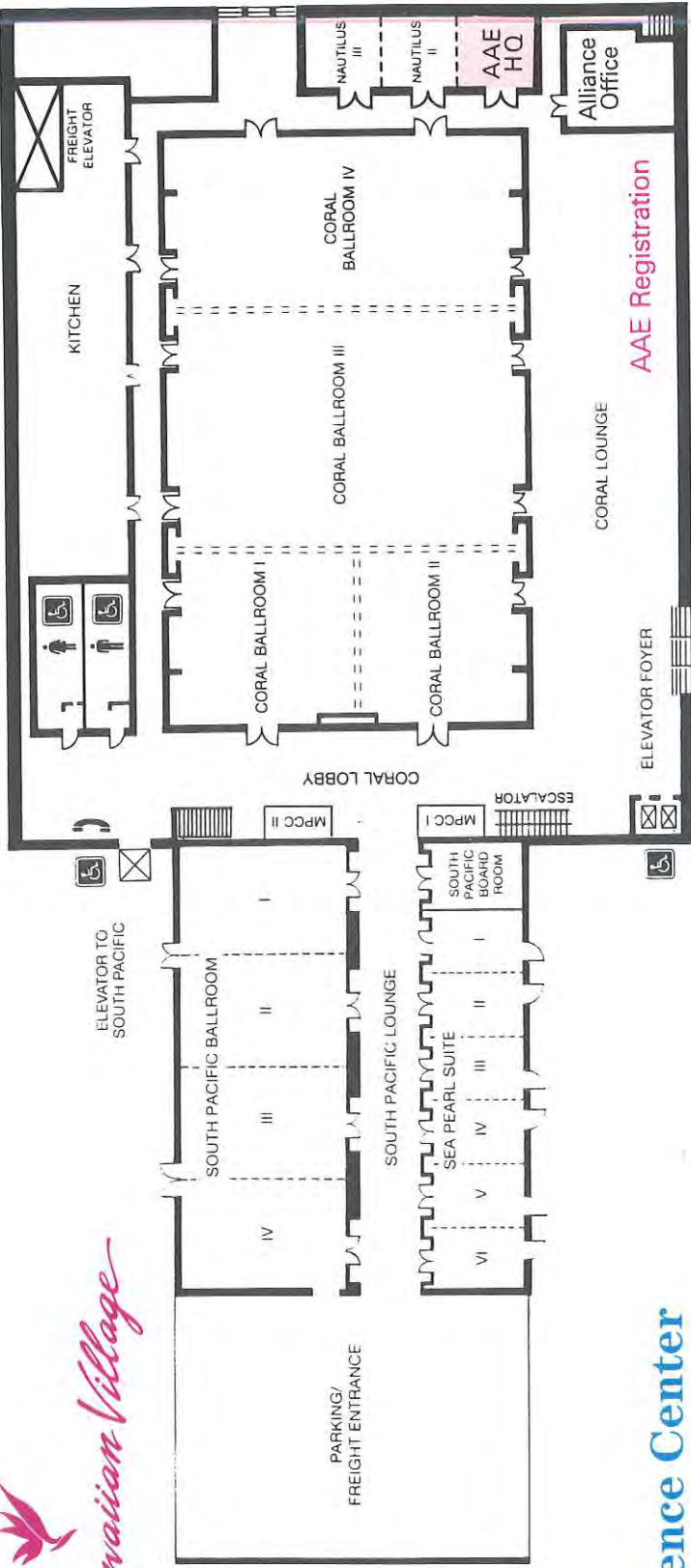
# Level 3



## Hawaii Convention Center

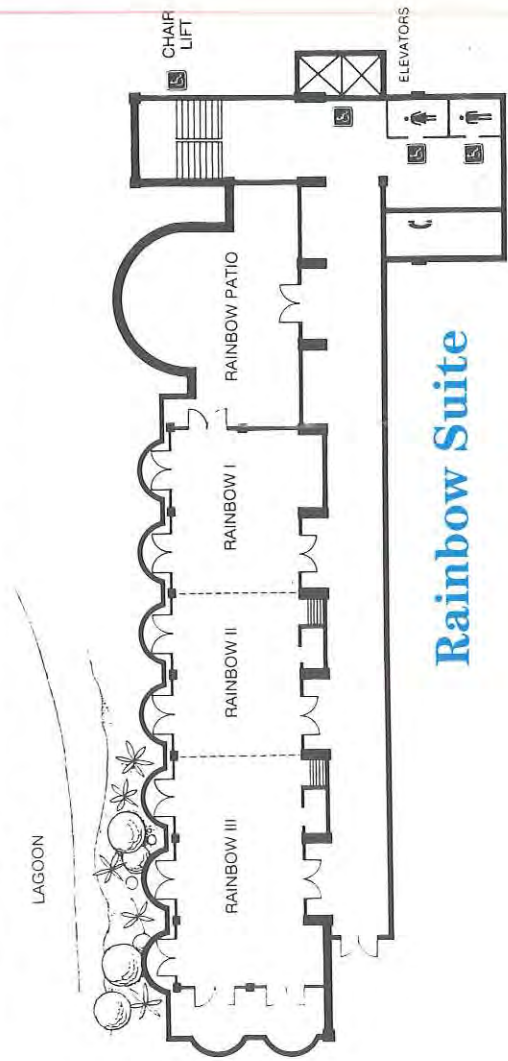
Beginning at 10:30 a.m., Thursday, the main program, exhibits, Grossman Luncheon, Friday and Saturday continental breakfasts and luncheons will be held at the Hawaii Convention Center.

**Tapa Conference Center**



**Mid Pacific Conference Center**

Wednesday CEC is the only educational session held at Hilton





American Association  
of Endodontists  
211 E. Chicago Avenue, Suite 1100  
Chicago, IL 60611-2691

